



## Derwent Road, W5

£850,000

A three bedroom house conveniently located in this Cul de Sac just moments from Northfields Piccadilly line station.

Also comprises entrance hall, front reception room and extended open plan kitchen / dining room with bi fold doors to the secluded garden.

Many neighbouring houses have been extended into the loft.

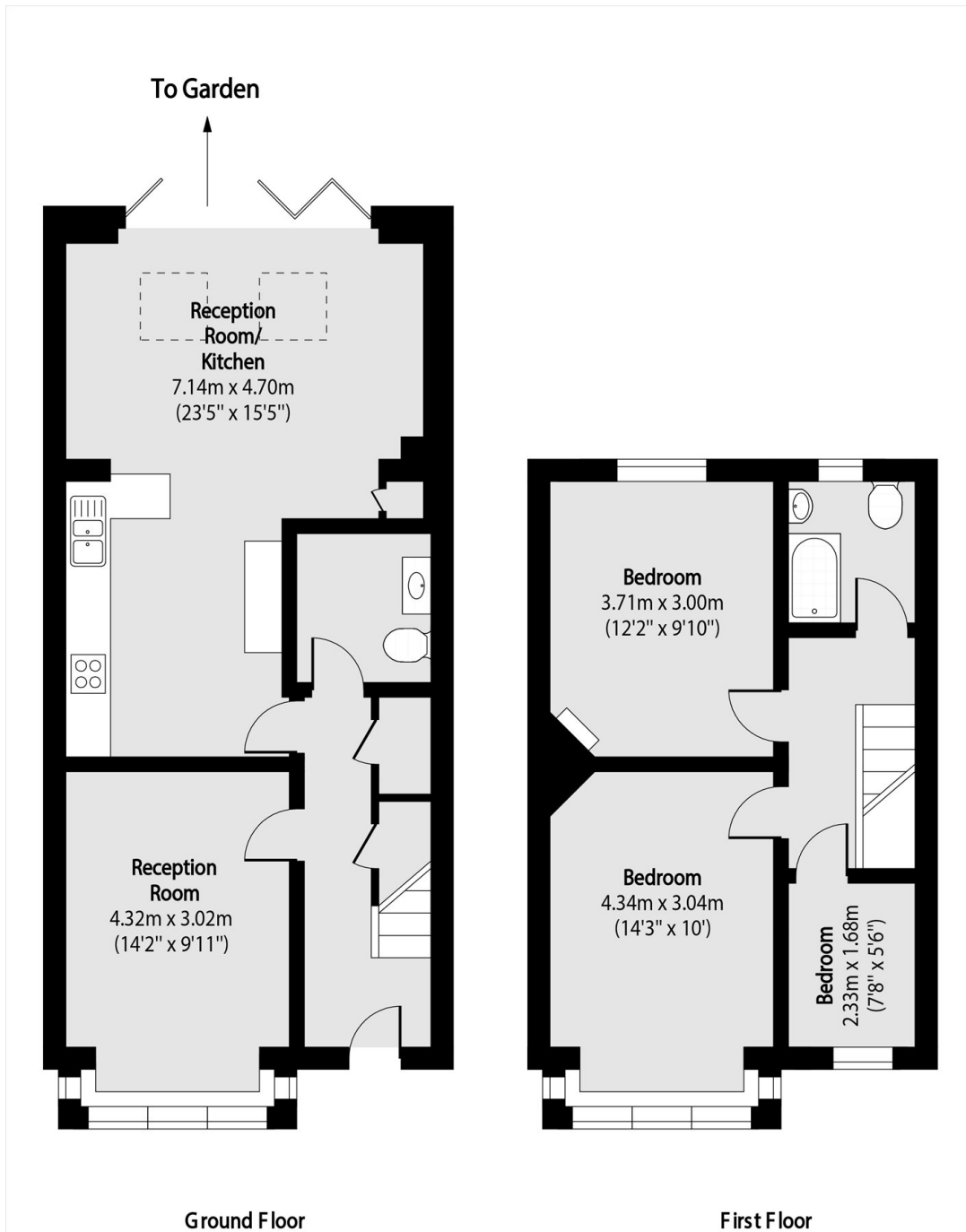
Set in a much sought after location close to Lammas Park, local shops and cafés and excellent schools.

Offered with no onward chain.

### Features

Three Bedroom House  
Extended Kitchen  
Potential to Extend  
Close to Tube  
Excellent Schools  
No Onward Chain

Derwent Road,  
London, W5



Total area (approx): 93.12 sq m (1002 sq. ft)