

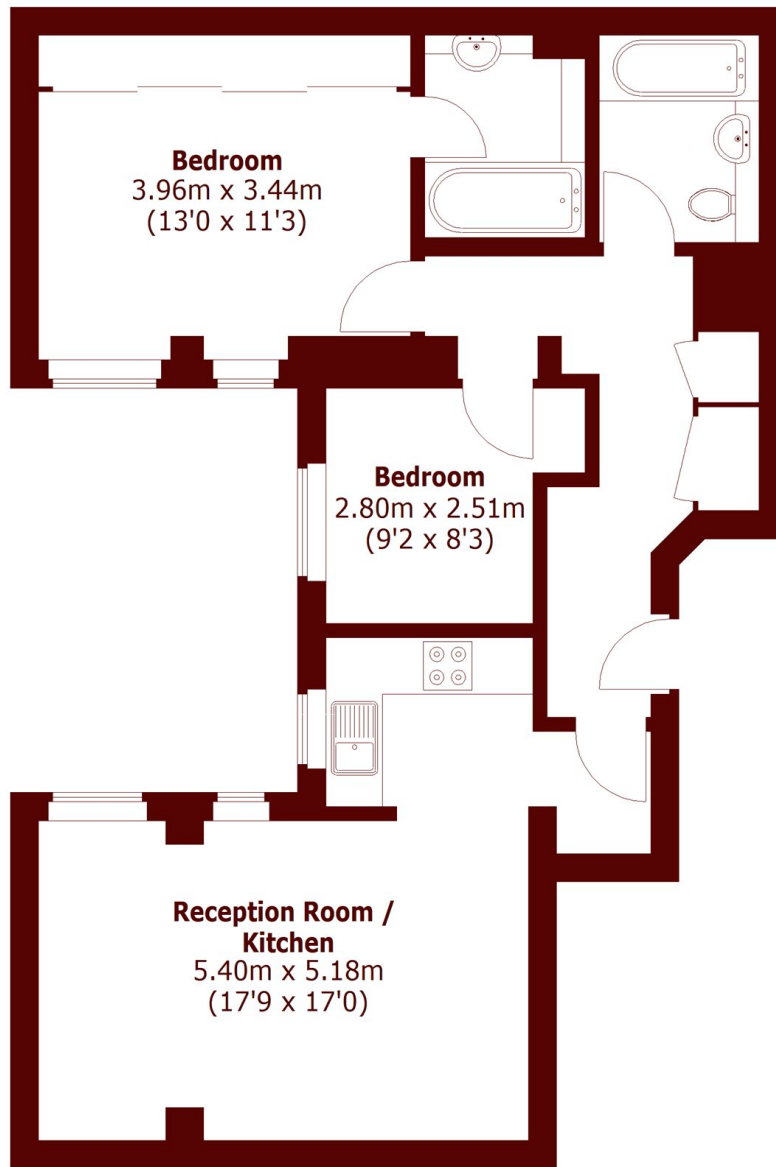


Kensington Gardens Square, W2

£800,000



- Two bedrooms
- Two bathrooms
- Communal gardens
- Amazing location
- Open Plan Kitchen
- Period Building



Raised Ground Floor

Total area (approx.): 63.5 sq. m (683.5 sq. ft)

Marsh & Parsons Notting Hill

2-6 Kensington Park Road,
London, W11 3BU
020 7313 2890