



ANAX STREET, N4

£3,000 pcm

Sleek and modern two-bedroom apartment in the desirable Woodberry Down development, featuring a bright open-plan living, dining, and kitchen area with floor-to-ceiling windows and access to a private balcony overlooking the water.

- Unfurnished
- Private Balcony
- Concierge
- Gym & facilities
- Cinema Room
- Business Lounge

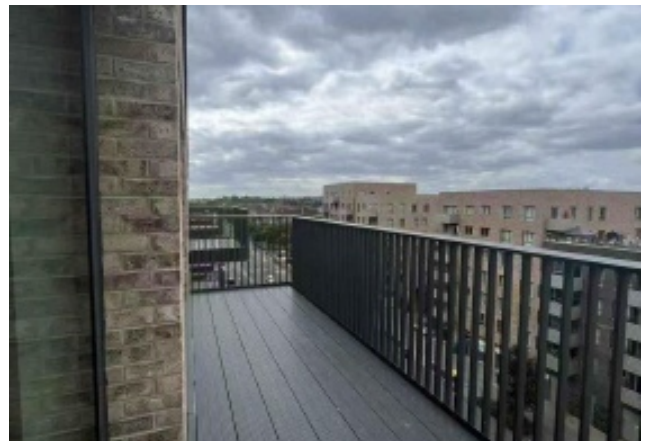


ABOUT THE HOME

Woodberry Down offers excellent transport links, just a short walk from Manor House

Underground Station with direct access via the Piccadilly Line to central London and Heathrow.

Nearby Finsbury Park Station provides additional Underground, National Rail, and Overground services, while local bus routes and the A503 offer easy connections across London.







LiFE RESIDENTIAL

71 Drayton Park, London, N5

1BF

Sales: 020 3838 8666

Lettings: 020 7359 4488

Energy Rating: B. We aim to make our particulars both accurate and reliable. However they are not guaranteed; nor do they form part of an offer or contract. If you require clarification on any points then please contact us, especially if you're traveling some distance to view. Please note that appliances and heating systems have not been tested and therefore no warranties can be given as to their good working order.