



Enfields Eastleigh
 1E Leigh Road,
 Eastleigh, Southampton,
 Hampshire, SO50 9FG
 T 023 8061 3646
 E sales-eastleigh@enfields.co.uk

Flat 6, 119, Regents Park Road,
 Guide Price £135,000

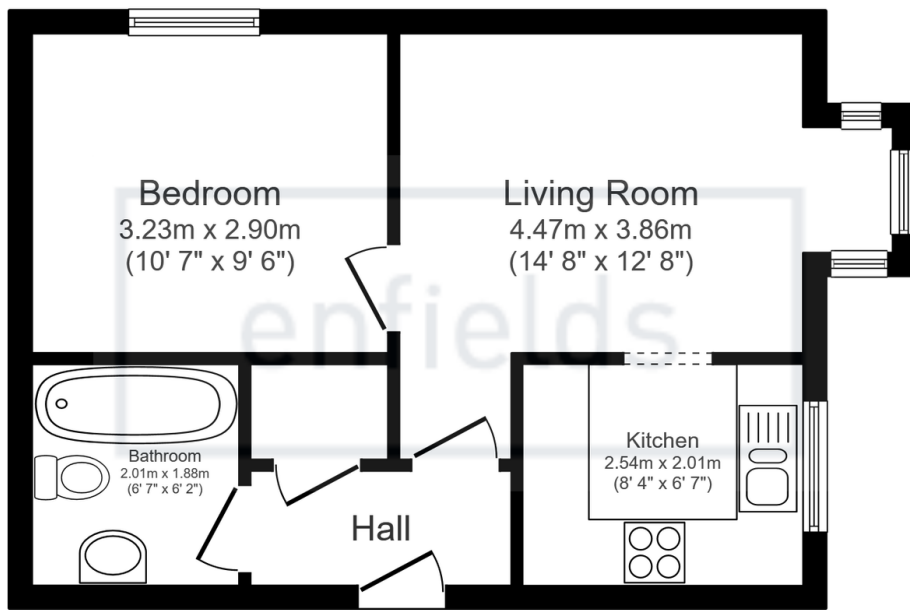
1 1 1





Enfields Eastleigh
1E Leigh Road,
Eastleigh, Southampton,
Hampshire, SO50 9FG
T 023 8061 3646
E sales-eastleigh@enfields.co.uk

- No Forward Chain
- One Double Bedroom
- Modern Bathroom
- Walking Distance To Shirley High Street
- First Floor Apartment
- Spacious Living Room
- 146 Year Lease Remaining
- Close To Transport Links



First Floor

Total floor area: 35.9 sq.m. (386 sq.ft.)

This floor plan is for illustrative purposes only. It is not drawn to scale. Any measurements, floor areas (including any total floor area), openings and orientations are approximate. No details are guaranteed, they cannot be relied upon for any purpose and do not form any part of any agreement. No liability is taken for any error, omission or misstatement. A party must rely upon its own inspection(s). Powered by www.Propertybox.io



No Forward Chain

Enfields are pleased to present this one double bedroom first floor apartment to the market. The property comprises of; Living room with bay window, one double bedroom, kitchen with ample storage and modern bathroom. Further benefits include no forward chain and walking distance to Shirley High Street. Ideal for first time buyers and investors.