



Hutchings Street, E14

£450,000

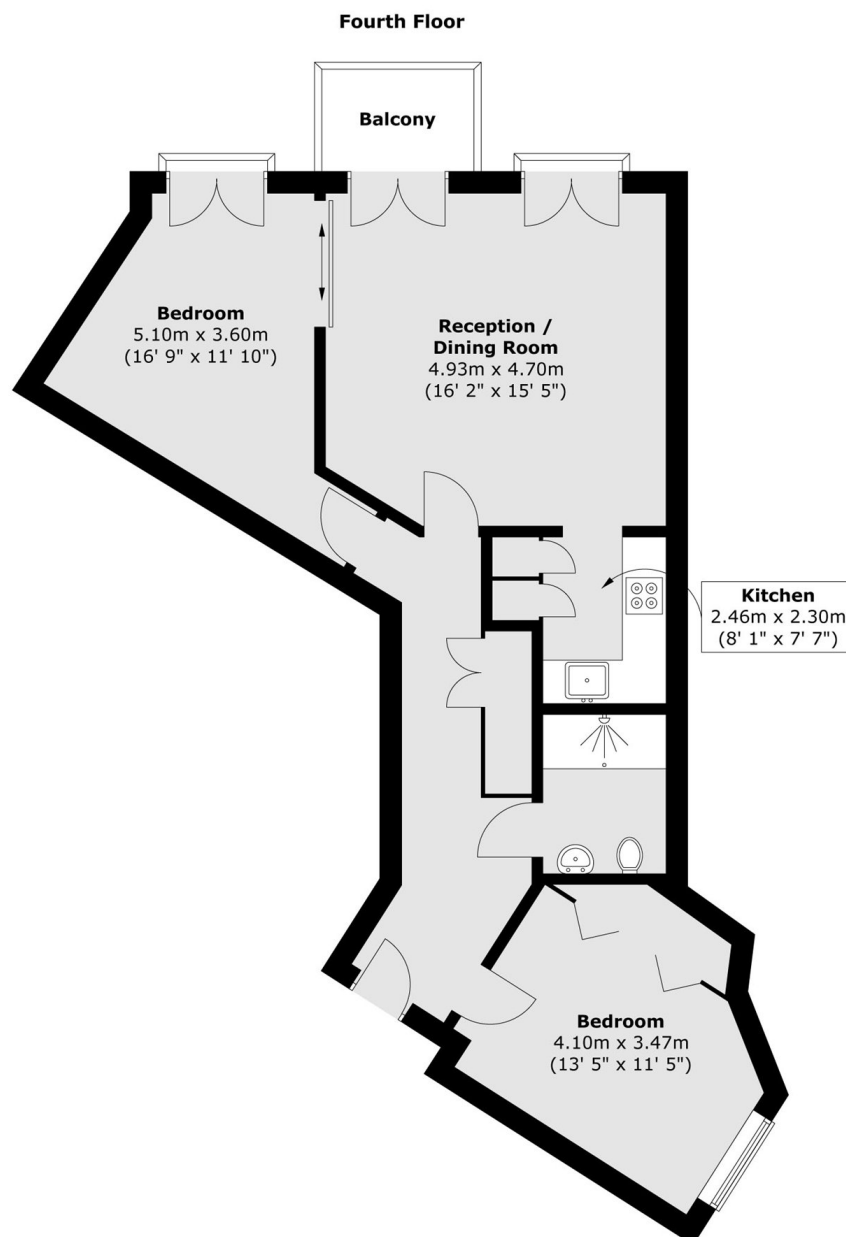
Situated within a sought-after riverside development, this well-presented two-bedroom apartment boasts uninterrupted river views. Refurbished to a modern standard throughout, the property offers approximately 750 sq ft of internal living space, together with access to a private river-facing balcony and a secure entry phone system. Residents further benefit from a concierge service, a private residents' gym with an extensive range of equipment, as well as additional leisure facilities including a spa room and tanning booth.

The Seacon Wharf development is ideally situated for convenient access to Canary Wharf (0.6 miles away), offering an extensive selection of bars, restaurants, cafés and local amenities. South Quay DLR Station is also located approximately 0.6 miles from the property, providing excellent transport links across London.

Features

- River Views
- Secure Entry Phone System
- Allocated Parking
- Modern Throughout
- Gated Development
- Residents Facilities

Hutchings Street, London, E14



Total area (approx.) : 69.7 sq. m (750 sq. ft)
Total balcony area (approx.) : 3.5 sq. m (38 sq. ft)