



Stadium Street, SW10

£1,615 Per week

A newly refurbished four double bedroom family home ideally located just off the Chelsea Embankment. The spacious reception room and open plan kitchen make this property the ideal base for a young family.

Moments from Chelsea Harbour, Lots Road is renowned as Chelsea's antique district whilst being close to the shops and restaurants of Kings Road as well as Fulham Broadway and Imperial Wharf.

Features

- Family Home
- Four Double Bedrooms
- Spacious Reception
- Fitted Storage
- Newly Refurbished
- Private Garden



Stadium Street, SW10

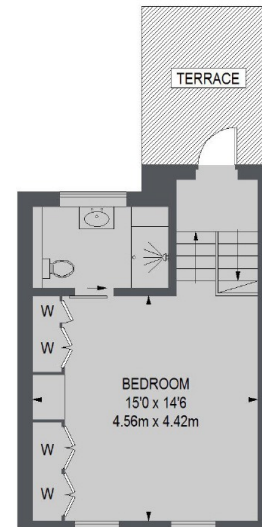
Entered via a private entrance on the ground floor directly into the spacious reception and large family kitchen fitted with Gaggenau and Miele appliances. The bi-folding doors at the rear of the property lead out to the private terrace turning the heart of the home into a perfect entertaining space.

The stairway leads to the first floor with the study, guest bathroom and master bedroom complete with ensuite bathroom. The second floor is home to two further double bedrooms, family bathroom and a balcony overlooking the terrace. The top floor lends itself perfectly to a nanny's room with fantastic storage, ensuite and a terrace off of the back.

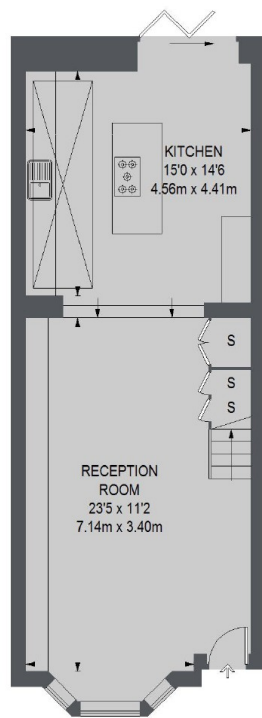
This property has been refurbished to a high standard with an integrated sound system and Lutron lighting throughout. There is an added bonus of river views from the terrace.



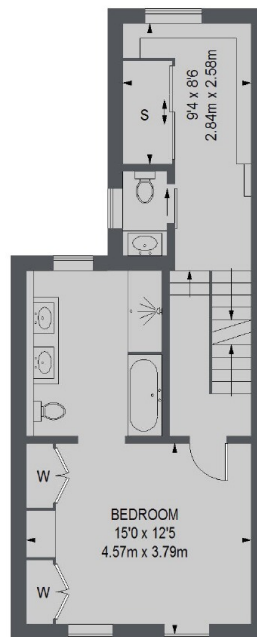
Stadium Street, London, SW10



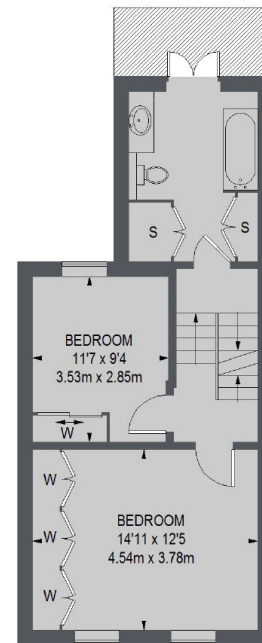
THIRD FLOOR



GROUND FLOOR



FIRST FLOOR



SECOND FLOOR

TOTAL APPROX. FLOOR AREA 1880 SQ. FT. (174.64 SQ. M.)