



## Ermine Road, SE13

£750,000

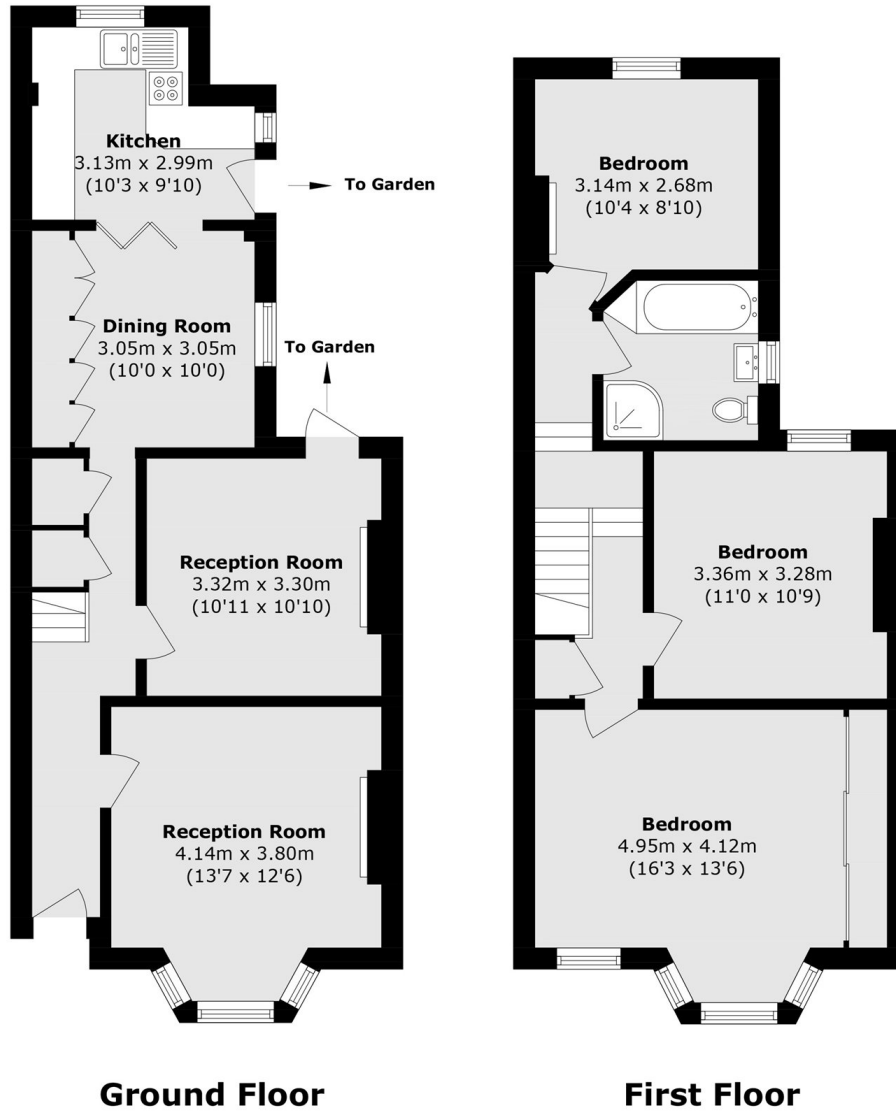
With scope to modernise to your own taste, a three bedroom Victorian house with a westerly facing garden. Well positioned for Hilly Fields and amenities of Ladywell Village and Brockley.

Ermine road is a lovely residential road located just around the corner from Hilly Fields and between St. John's, Lewisham and Ladywell train stations giving excellent transport links.

### Features

- Three Double Bedrooms
- Two Reception Rooms
- Rear Garden
- Close To Hilly Fields
- Close To Transport
- Chain Free

Ermine Road,  
London, SE13



Total area (approx.): 104.7 sq. m (1127.0 sq. ft)