
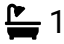





Property Webb
At the HEART of your move

Meadowhead Crescent, Addiewell, EH55 8PA

Offers Over £135,000

 3  1  1



Stylishly upgraded and beautifully presented throughout, this spacious 3 double bedroom semi-detached home sits on a generous plot with driveway parking, open outlooks to the rear and a superb family-friendly layout. With spacious gardens, excellent storage and three genuine double bedrooms, this is an ideal home for families, first-time buyers or anyone looking for extra space in a popular residential setting.

 01506 637553

 info@property-webb.co.uk

 www.property-webb.co.uk

 71 South Bridge St, Bathgate, EH48 1TJ

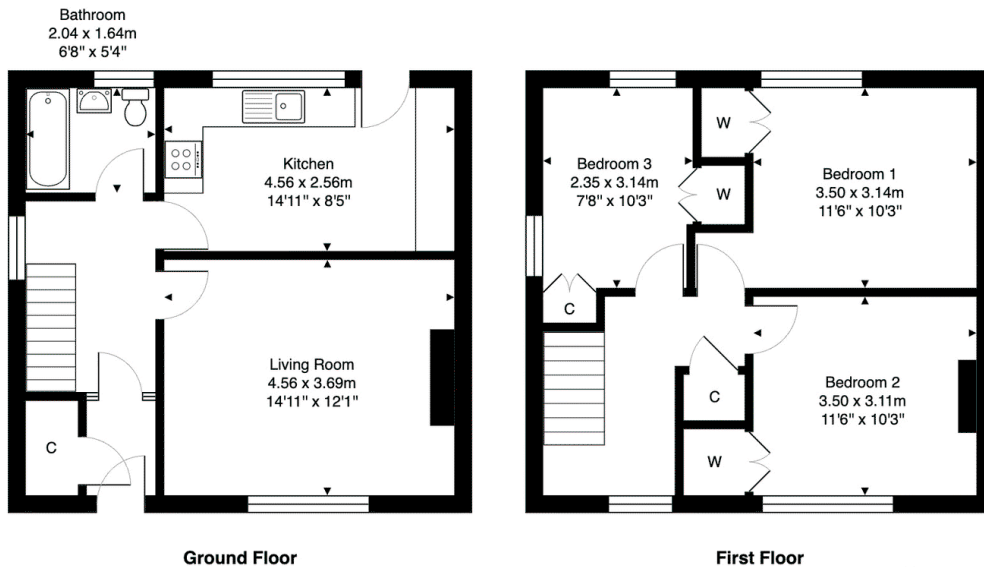


Property Webb
At the HEART of your move

Key Features

- Semi-Detached home
- Move-in ready
- Spacious Lounge
- Stylish kitchen/breakfast rom
- 3 double bedrooms
- Contemporary bathroom
- Good storage
- Large West facing garden
- Driveway for 2/3 cars
- Excellent family home

50 Meadowhead Crescent, Addiewell, EH55 8PA



Total Area: 86.5 m² ... 931 ft²

All measurements are approximate and for display purposes only.



01506 637553

info@property-webb-co.uk

www.property-webb.co.uk

71 South Bridge St, Bathgate, EH48 1TJ