



OVER 60?

Secure this property
for up to **59% less!**

Price

£750,000

Freehold

5x  2x  4x 

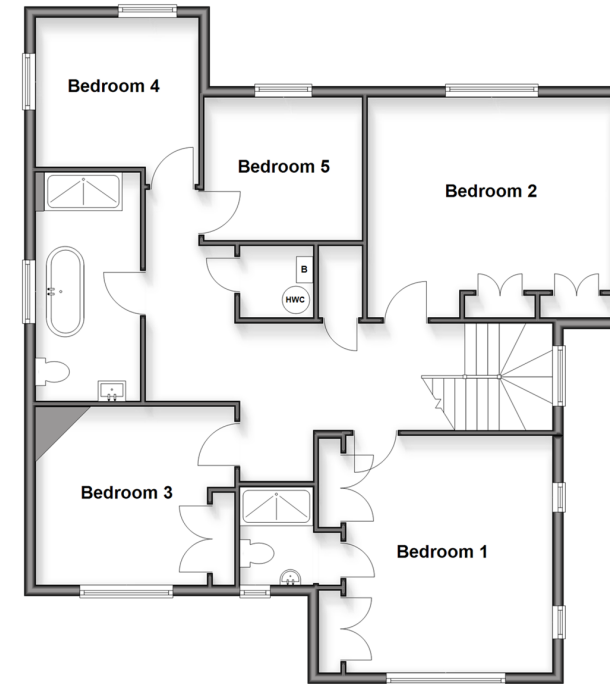
**Salisbury Road, Walmer,
Deal, Kent, CT14**

Wards
Helping you move forwards

Ground Floor
Approx. 158.0 sq. metres (1700.4 sq. feet)



First Floor
Approx. 98.7 sq. metres (1062.0 sq. feet)



Accommodation

GROUND FLOOR

Entrance Porch
Entrance Hallway
Study: 12'7 x 10'7 (3.84m x 3.23m)
Cloakroom
Kitchen/Breakfast Area : 20'3 x 13'3 (6.18m x 4.04m)

Utility Room

Garden Room : 13'9 x 13'6 (4.19m x 4.12m)
Dining Room : 14'8 x 13'3 (4.47m x 4.04m)
Lounge : 16'8 x 14'1 (5.08m x 4.30m)

FIRST FLOOR

Landing
Bedroom 2: 14'8 x 13'3 (4.47m x 4.04m)
Bedroom 5: 9'6 x 9'0 (2.90m x 2.75m)
Bedroom 4: 11'5 x 10'8 (3.48m x 3.25m)
Bathroom
Bedroom 3: 12'2 x 10'6 (3.71m x 3.20m)
Bedroom 1: 16'8 x 12'4 (5.08m x 3.76m)
En-suite

OUTSIDE

Driveway
Integral Double Garage
Rear Garden



Main features

- 1930's House set on a large plot
- Substantial walled rear garden with sandstone patio
- Gated driveway for multiple vehicles with double garage
- Updated throughout including new kitchen, bathroom, boiler and radiators
- Flexible accommodation, perfect for family and work from home space



Nearest Schools

Primary Schools: The Downs C of E Primary 0.1 miles, St Mary's Catholic Primary 0.6 miles, Deal Parochial C of E Primary 0.6 miles

Secondary Schools: Goodwin Academy 0.1 miles,



Transport Information

Train Stations: Walmer 0.2 miles, Deal 1.2 miles, Martin Mill 2.9 miles



Address

Salisbury Road, Walmer, Deal, Kent, CT14



Directions

For directions to this property please contact us.



Call Deal Branch 01304 361420 ■ wardsofkent.co.uk



- Legal advice should be taken to verify fixtures/fittings, planning, alterations and/or lease details
- Appliances & services are untested, dimensions are approximate and floor plans are not to scale
- Through a Homewise Home For Life Plan people aged 60+ can secure this property for up to 50% less, by purchasing a Lifetime Lease.



10635605/20251021/BG/LB1