



# GLAZBURY ROAD

*London, W14*

*£600,000*

1 Bed | 1 Bath |

**SANDERSONS**  
LONDON



## *A lovely one bedroom garden apartment*

Set on Glazbury Road in London, this delightful one-bedroom garden apartment offers a unique blend of period charm and modern potential. Housed in a Victorian period building, the property boasts an exceptionally large private garden. Additionally, there is potential to extend the apartment, subject to planning permission and the necessary consents, allowing you to tailor the space to your personal needs.

The apartment features a well-proportioned reception room, perfect for relaxation or entertaining guests. The bedroom provides a tranquil retreat, while the bathroom is conveniently located to serve both residents and visitors alike.

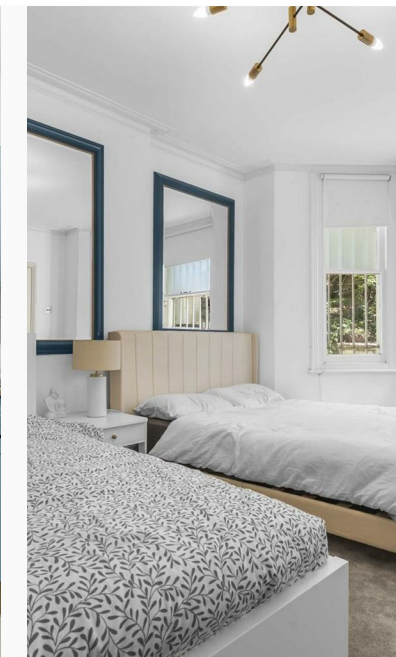
One of the standout features of this property is the expansive garden, which presents an excellent opportunity for outdoor living, gardening, or simply enjoying the fresh air in a private setting.

Situated just a short distance from Barons Court tube station, this location offers excellent transport links, making it easy to explore all that London has to offer.



## KEY FEATURES

- One Bedroom Apartment
- Period building
- Large private garden
- Close to Barons Court Underground Station
- Potential to extend (subject to planning & consents)



**Floor Plan**  
Approximate gross  
internal area.  
Not to scale.




EPC Rating: | Council Tax Band: E

## SANDERSONS

LONDON

 108 Holland Park Avenue, London,  
W11 4UA

 020 7602 6725

 james@sandersonslondon.co.uk

 sandersonslondon.co.uk