



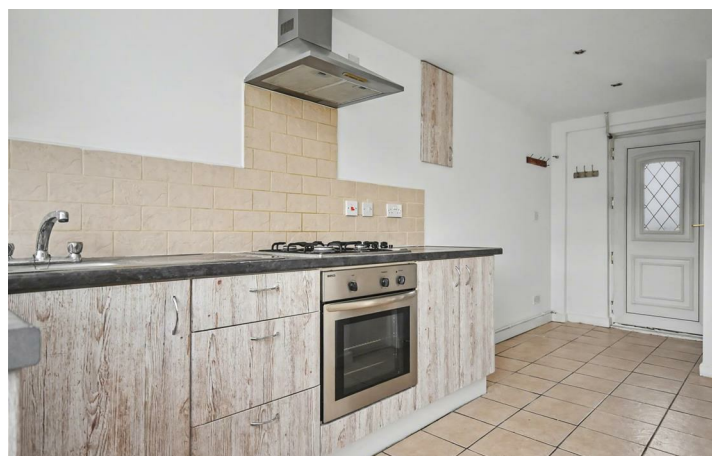
6 Thorne Court  
Corby, Northants NN18 0PL

Occupying a pleasant position within the popular Beanfield area is this TWO DOUBLE bedroom residence. The property itself is well located being within walking distance to the local schools, shops and other amenities. Features include an entrance hall, living room and a modern fitted kitchen breakfast. To the first floor there are two double bedrooms and the main family bathroom. Outside is an enclosed garden that is mainly laid to lawn with a patio area. Out the front there is a large amount of communal car parking available. Early viewings are highly encouraged. Energy rating D. Council Tax Band A.

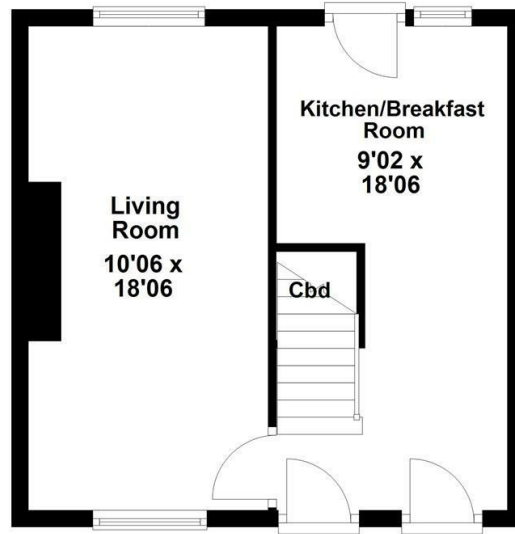


£950 Per Month

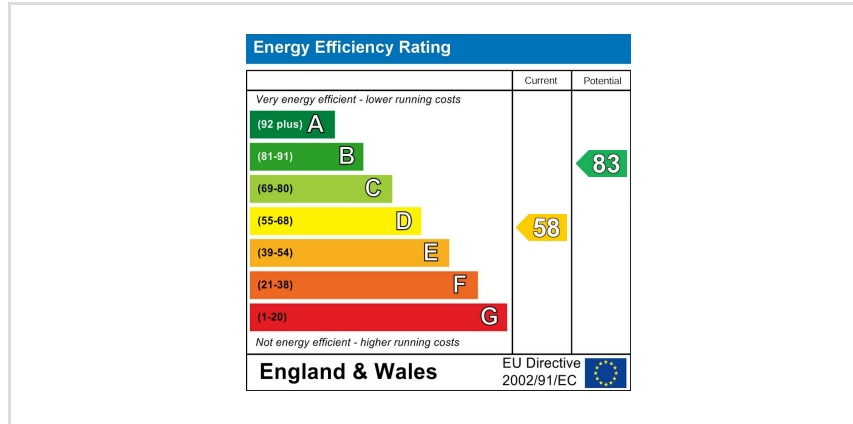
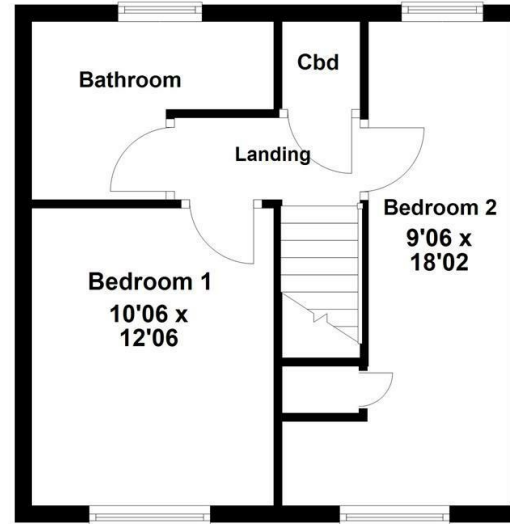
 2  1  1



**Ground Floor**



**First Floor**



When you buy with Simpson West, you know **you'll be in safe hands**. From the moment you walk through our doors, we'll make you **feel truly welcome**. Our sales consultants and financial advisors will take you through **every step of the process**, offering **free expert advice** along the way, from help choosing the right mortgage and insurance through to finding your conveyancer. And if you need help selling your home too, **with over 20 years of local experience, you can trust us to get you moving**.



**Simpson  
West**

Making Every  
Journey Personal



01536 202007

[info@simpsonwest.co.uk](mailto:info@simpsonwest.co.uk)

<https://www.simpsonwest.co.uk/>

64 Corporation Street, Corby, Northants, NN17 1NH