





6 Wells Avenue

Lostock Gralam, Northwich

Spacious four bedroom detached home, close to local amenities and transport links.

Council Tax band: D

Tenure: Leasehold

EPC Energy Efficiency Rating:

EPC Environmental Impact Rating:

- Detached Family Home
- Four Bedrooms
- Driveway
- Garage
- En-Suite
- Lovely Rear Garden
- Close to Local Amenities
- Video Tour Available
- Viewings Essential
- LEASEHOLD

Hallway

Lounge

Kitchen Diner

Utility Room

WC

Landing

Master Bedroom

En-Suite

Bedroom Two

Bedroom Three

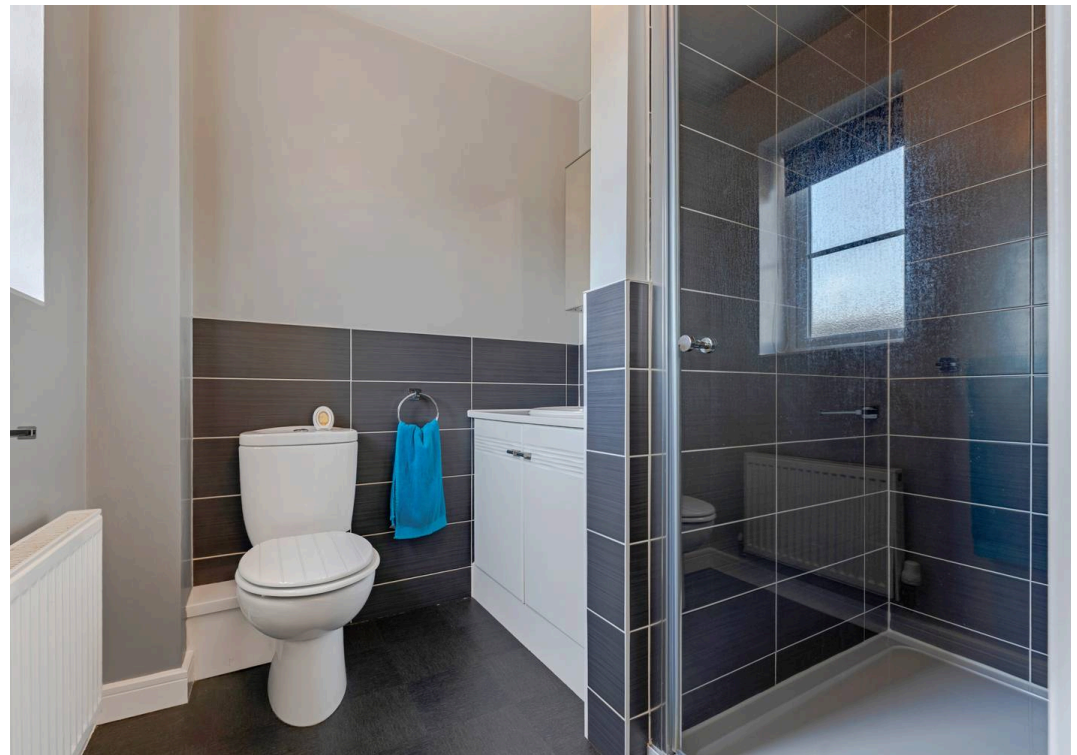
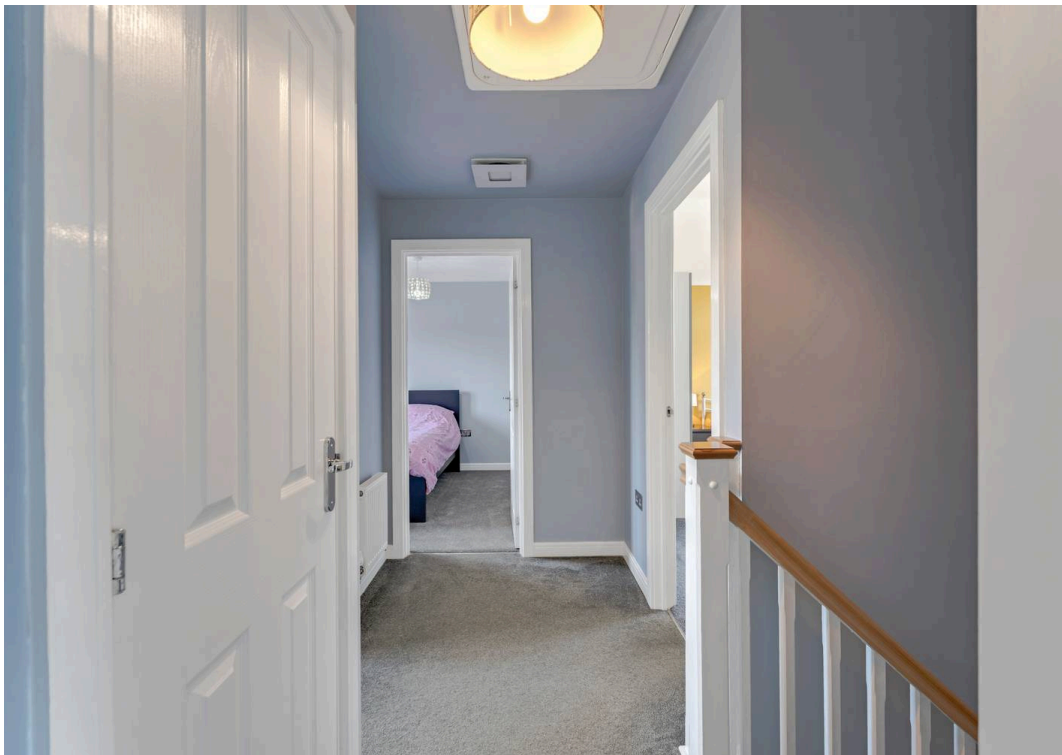
Bedroom Four

Family Bathroom





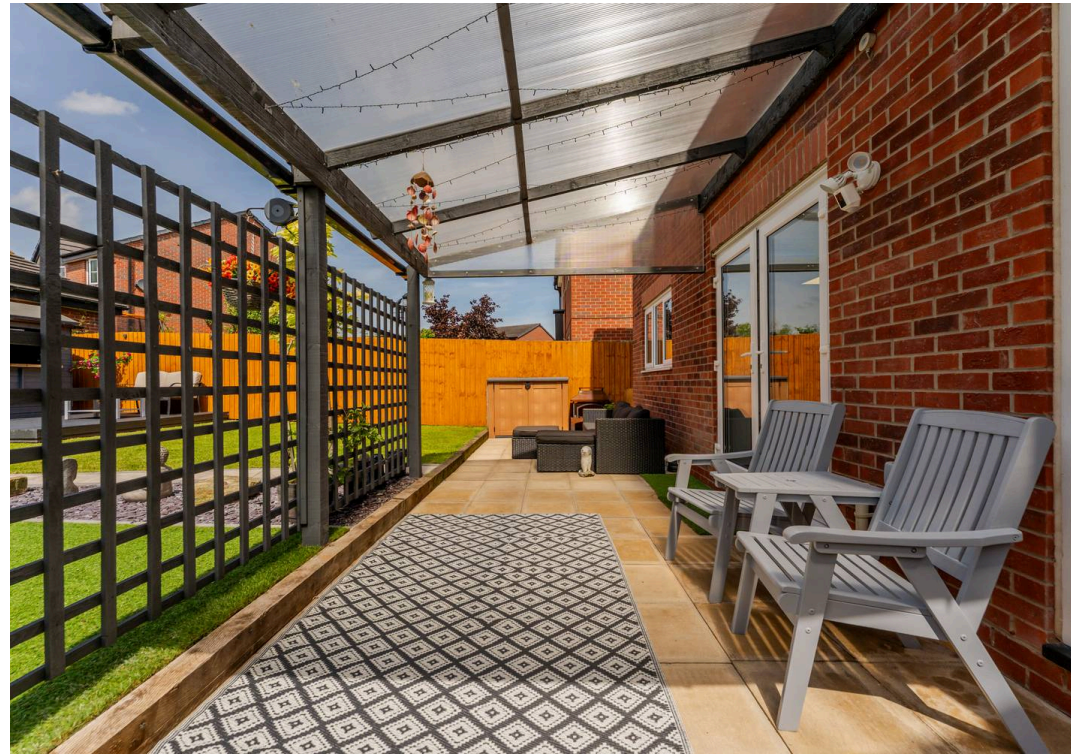














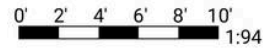


**6 Wells Avenue,
Northwich**

DETAILS

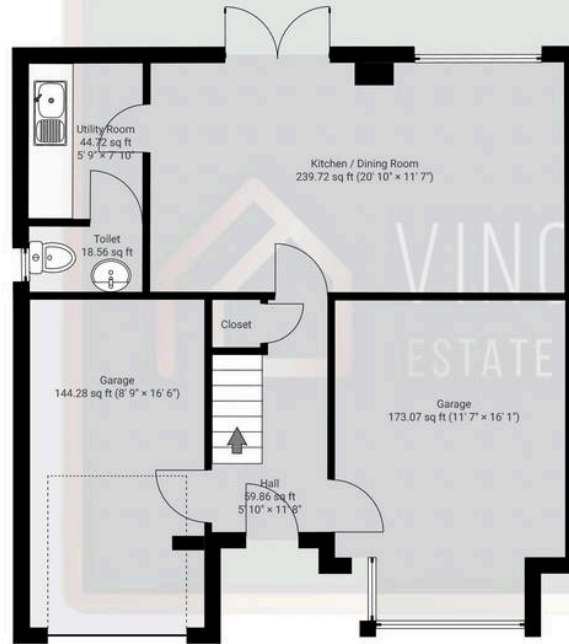
Total area: 1307.77 sq ft
Living area: 990.43 sq ft
Floors: 2
Rooms: 15

THIS FLOORPLAN IS PROVIDED WITHOUT WARRANTY OF ANY KIND. VINCENT JAMES ESTATE AGENCY DISCLAIMS ANY WARRANTY INCLUDING, WITHOUT LIMITATION, SATISFACTORY QUALITY OR ACCURACY OF DIMENSIONS.



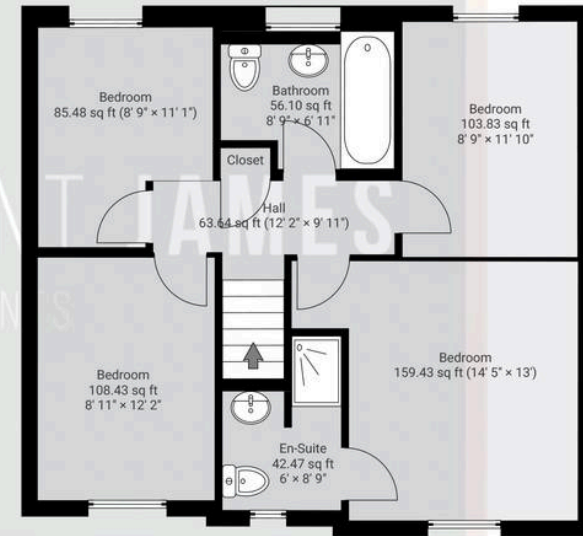
▼ Ground Floor

TOTAL AREA: 685.56 sq ft · LIVING AREA: 368.22 sq ft · ROOMS: 7



▼ 1st Floor

TOTAL AREA: 622.21 sq ft · LIVING AREA: 622.21 sq ft · ROOMS: 8



Vincent James Estate Agents

87 Witton Street, Northwich – CW9 5DR

01606663939 • hello@vincentjamesestateagents.co.uk • www.vincentjamesestateagents.co.uk/