

Luxury+Prestige

MOONBEAM

15A CRICHEL MOUNT ROAD, EVENING HILL, POOLE, BH14 8LT



















Floorplan

Moonbeam, 15A Crichel Mount Road
Evening Hill, Poole, BH14 8LT

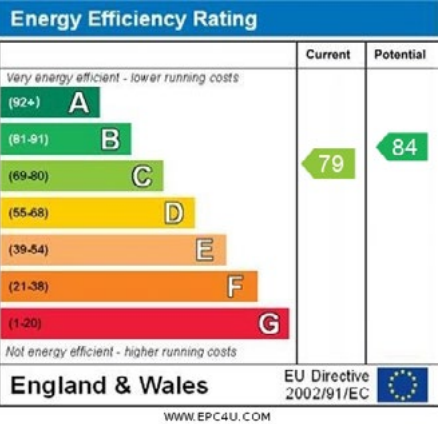
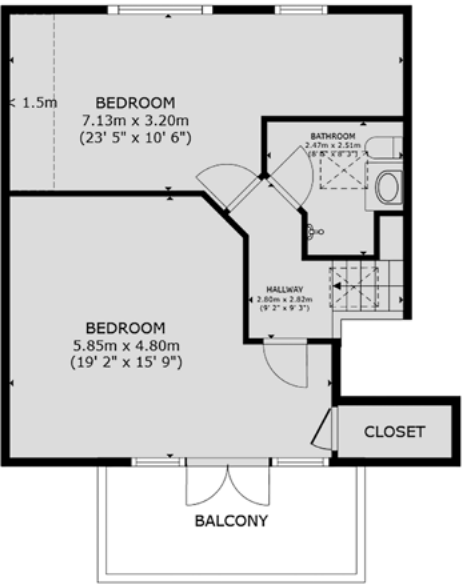
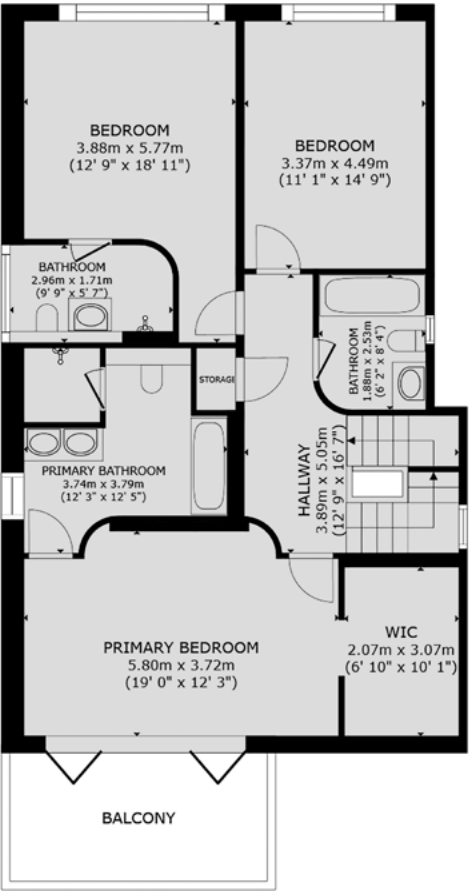
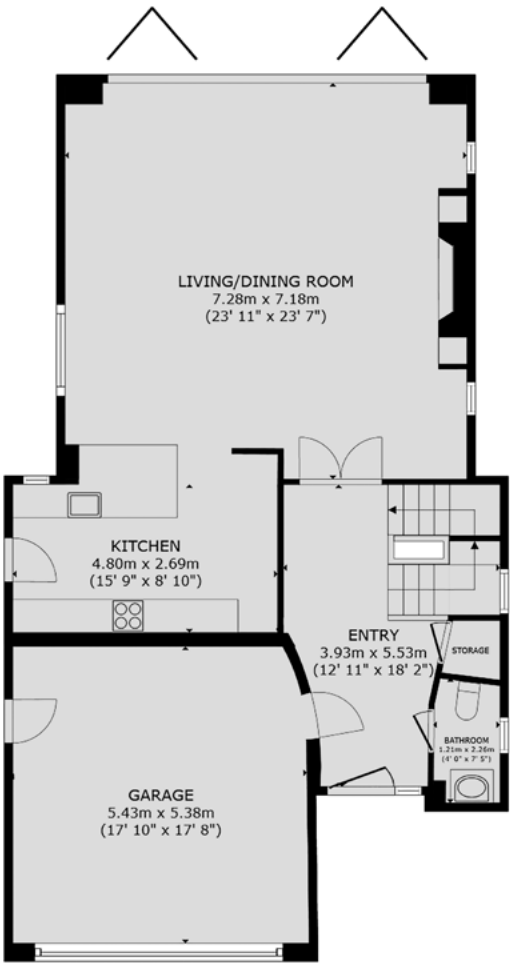
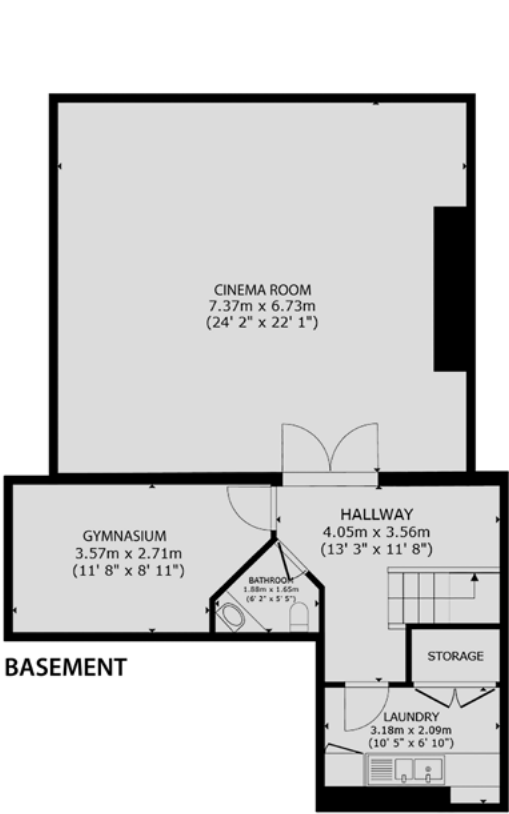
GROSS INTERNAL AREA

House:
Basement: 907 sq. ft / 84 m²
Ground Floor: 945 sq. ft / 88 m²
First Floor: 1,056 sq. ft / 98 m²
Second Floor: 576 sq. ft / 54 m²
Total: 3,484 sq. ft / 324 m²

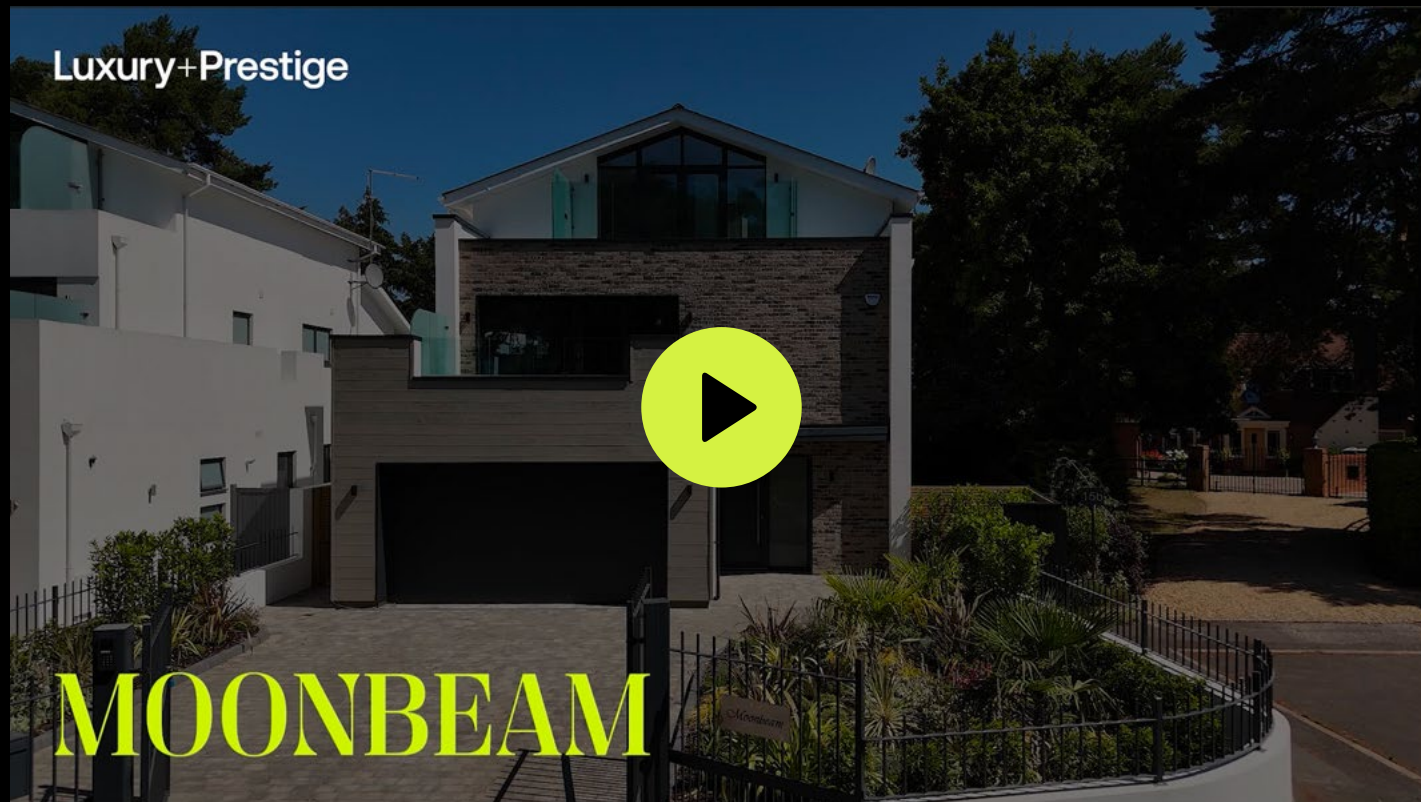
Garage: 307 sq. ft / 29 m²

Overall Total: 3,791 sq. ft / 353 m²

Sizes and dimensions are approximate, actual may vary.



TAKE A STEP INSIDE



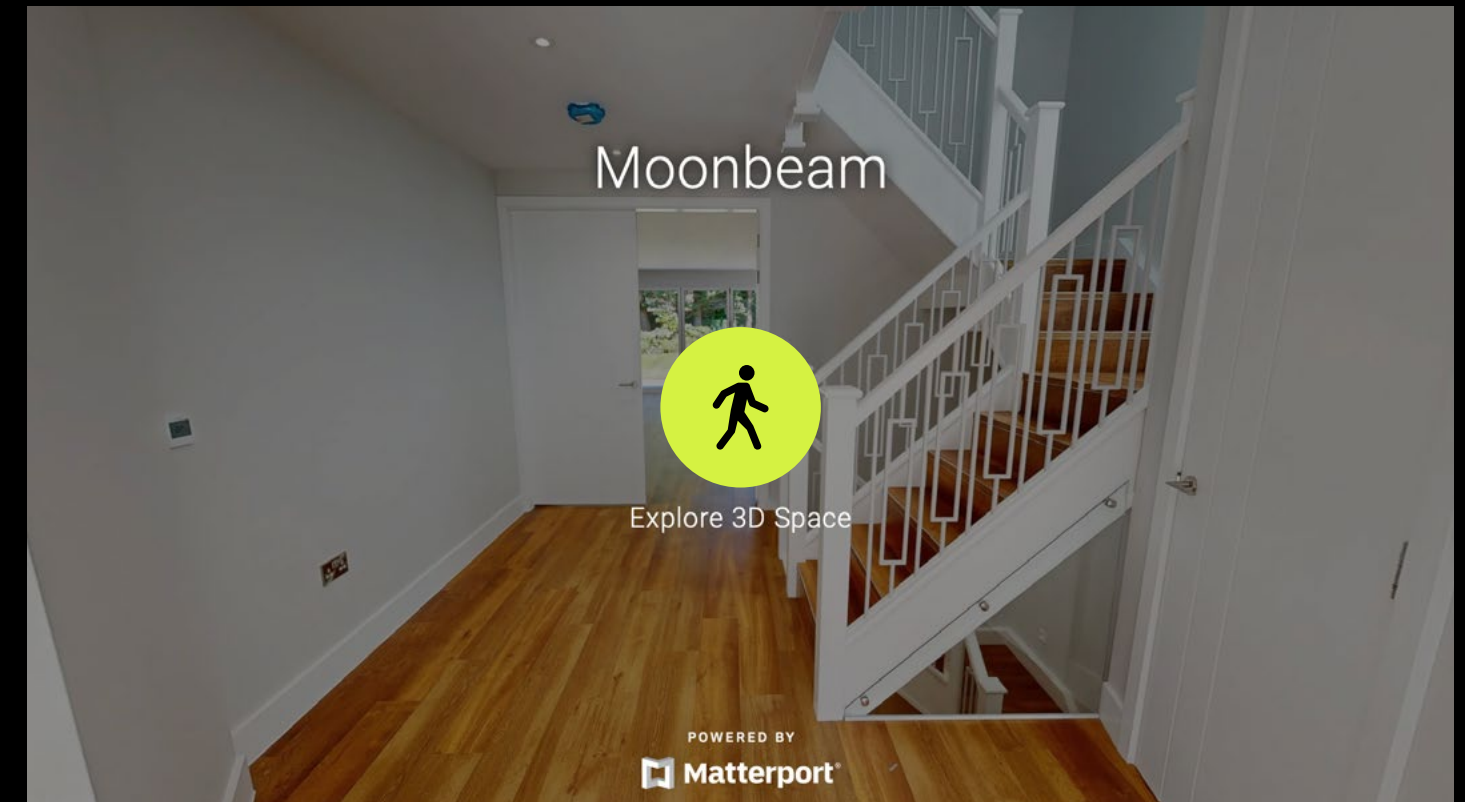
Simply click on the thumbnail above to let one of our team give you a guided tour of the highlights.

If you are longing for a more in-depth explore at your own pace, then head across the page to our fully interactive 3D tour.

vimeo

Can't wait to view in person?

All of our properties feature a professionally produced one minute video, personally introduced by a member of our team as well as a fully interactive 3D tour.



Simply click on the thumbnail above to take a step inside and explore this beautiful home.

This fully immersive experience allows you to 'click and drag' your way through the property at your own pace. It is best viewed on a desktop screen or in landscape mode on your smartphone or tablet.

Matterport™

Summary

Moonbeam is a stunning contemporary home situated on one of the areas most exclusive roads, just a short stroll from the world-renowned Poole Harbour.

Having undergone an extensive and meticulous refurbishment, this exceptional property combines luxury and modern design. It extends to 3,781 square feet spread over four storeys. The ground floor features an integral double garage, a stylish cloakroom and a spacious open-plan kitchen, living, and dining area. Flooded with natural light, this area offers a seamless connection to the beautifully landscaped garden through bi-fold doors, ideal for both everyday living and entertaining. The lower ground floor has been thoughtfully designed for recreation and relaxation, with a dedicated cinema/games room, a gym, and a practical utility room, ensuring every need is catered to. On the first floor, the principal suite offers a private retreat, complete with access to a balcony, a luxurious walk-in dressing room, and a beautifully appointed en-suite bathroom. Two additional double bedrooms are also located on this level, as well as two modern bathrooms. The second floor boasts two more generous double bedrooms, each finished to the highest standards, along with a well-designed bathroom. A gated driveway provides secure access to a block-paved parking area, offering space for multiple vehicles. The rear garden is a true highlight, offering a peaceful oasis with beautifully landscaped grounds and a charming summer house, perfect for outdoor dining or relaxation.

Details

Guide Price:	£2,195,000
Tenure:	Freehold
Lease Length:	N/A
Maintenance:	N/A
Ground Rent:	N/A* * Ground Rents can increase over time and advice should always be sought from your solicitor before exchange of contracts.
Stamp Duty:	Main Home £177,150** Additional Home £286,900** ** based on guide price
Local Authority:	BCP Council
Council Tax:	Band H 2025/2026 £4,509.88pa*** *** Amount shown is for a main home, please seek advice for additional home.
Services:	Mains gas, electricity, water and drainage

Key features

- + Striking contemporary home
- + Five spacious double bedrooms
- + Four beautifully appointed bathrooms
- + Luxurious open plan living space
- + Cinema and gym on lower ground level
- + Landscaped low maintenance rear garden
- + Gated driveway with double garage
- + Sought after cul-de-sac location
- + Extensively refurbished throughout
- + No forward chain

Our team



Steve Isaacs
Director

07970 878106
steve@luxuryandprestige.com



David Chissell
Director

07795 835647
david@luxuryandprestige.com



Harriet Towing
Head of Sales

07809 908718
harriet@luxuryandprestige.com



Adrianna Ciereszko
Photographer

01202 007373
adrianna@luxuryandprestige.com



Ryan Horan
Land & New Homes

07512 196688
ryan@luxuryandprestige.com



Thomas Powner
Residential Sales

07437 491094
tom@luxuryandprestige.com



Asia Roberston
Social Media Manager

01202 007373
asia@luxuryandprestige.com



Valentina Morana
Residential Sales

07366 799790
valentina@luxuryandprestige.com



Joanne Bound
Search Agent

01202 007373
jbound@luxuryandprestige.com

Get in touch

In person:	28A Haven Road Canford Cliffs Poole BH13 7LP
By phone:	01202 007373
By email:	info@luxuryandprestige.com
Online:	luxuryandprestige.com
Facebook:	facebook.com/luxuryandprestige
Instagram:	@luxuryprestigerealty
Property ref:	1061
Published:	September 2025



Important notice
Luxury and Prestige Realty Ltd, its clients and any joint agents give notice that 1: They are not authorised to make or give any representations or warranties in relation to the property either here or elsewhere, either on their own behalf or on behalf of their client otherwise. They assume no responsibility for any statement that may be made in these particulars. These particulars do not form part of any offer or contract and must not be relied upon as statements or representations of fact. 2: Any areas, measurements or distances are approximate. The text, photographs and plans are for guidance only and are not necessarily comprehensive. It should not be assumed that the property has all necessary planning, building regulation or other consents and Luxury and Prestige have not tested any services, equipment or facilities. Purchasers must satisfy themselves by inspection or otherwise.

Luxury+Prestige

luxuryandprestige.com