



Queen's Club Gardens, W14

£3,980 Per calendar month

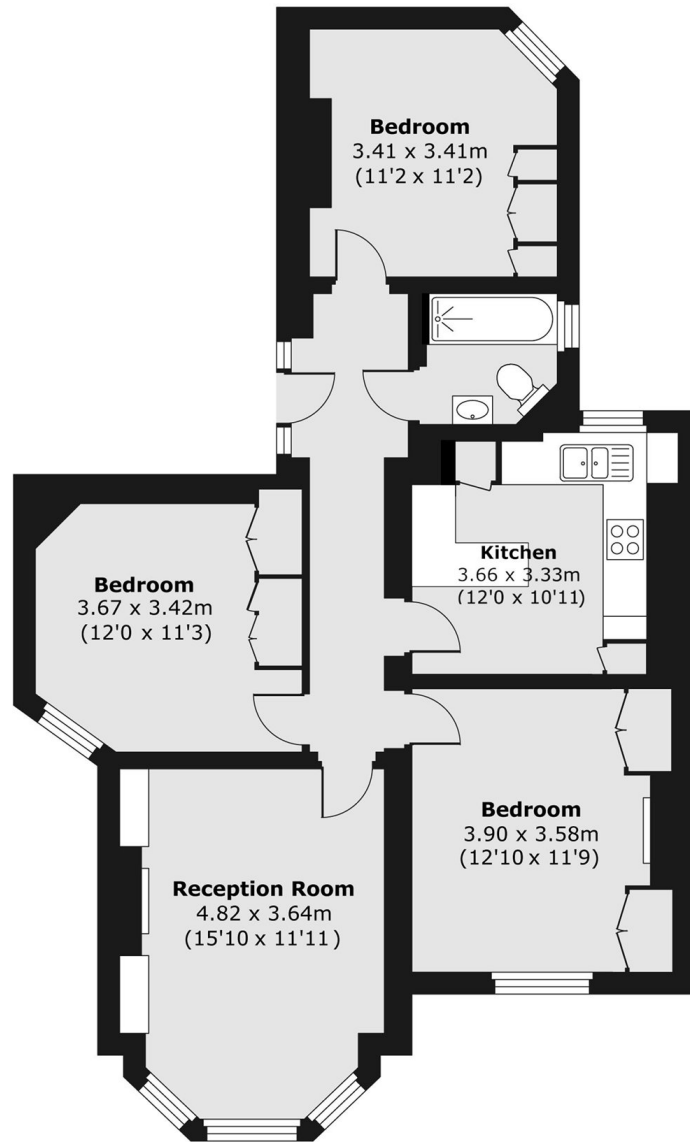
This three bedroom lateral apartment on the first floor of a sought after development with access to communal gardens and tennis courts is perfect for a family or professional sharers.

Queens Club Gardens is located just South off Queens Club within five hundred yards to either Barons Court or West Kensington underground stations and within a mile to the facilities in Fulham, Earls Court and Kensington.

Features

- Three Bedrooms
- One Bathroom
- First Floor Lateral Property
- Communal Gardens
- Red Brick Mansion Block
- Fitted Storage

Queen's Club Gardens, London, W14



First Floor

Total area (approx.) 82.39 sq. m (887 sq. ft)