



Guide Price

£500,000

Freehold

4x  2x  2x 

**Allen Close, Lords
Wood, Chatham, Kent,
ME5**

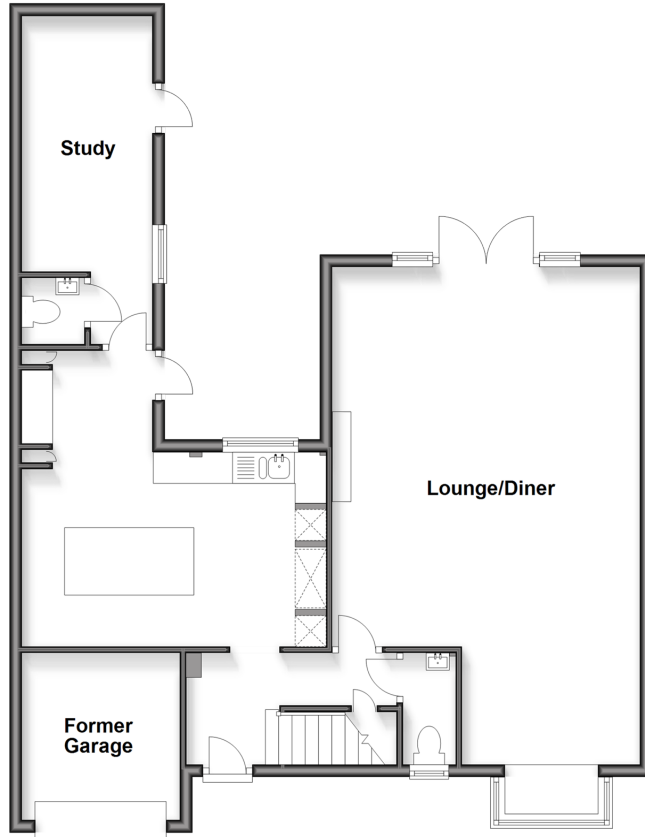
OVER 60?

Secure this property
for up to **59% less!**

Wards
Helping you move forwards

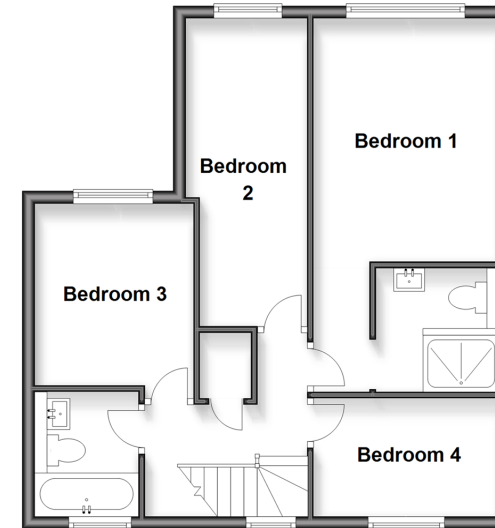
Ground Floor

Approx. 82.7 sq. metres (889.9 sq. feet)



First Floor

Approx. 52.8 sq. metres (568.3 sq. feet)



Accommodation

GROUND FLOOR

Entrance Hallway

Cloakroom

Lounge/Diner : 20'1 x 16'3 (6.13m x 4.96m) narrowing to 9'4 into recess x 8'8 (2.85m x 2.64m)

Kitchen : 16'3 x 10'1 (4.96m x 3.08m)

Utility Room : 6'8 x 5'5 (2.03m x 1.65m)

Cloakroom

Study: 13'6 x 7'4 (4.12m x 2.24m)

FIRST FLOOR

Landing

Bedroom 1 : 12'8 x 9'7 (3.86m x 2.92m)

En Suite Shower

Bedroom 2 : 16'9 x 6'5 (5.11m x 1.96m)

Bedroom 3 : 10'4 x 8'4 (3.15m x 2.54m)

Bedroom 4 : 9'8 x 6'2 (2.95m x 1.88m)

Family Bathroom : 6'6 x 5'3 (1.98m x 1.60m)

OUTSIDE

Former Garage

Driveway

Rear Garden



Main features

- Double storey extension providing exceptional additional living space
- Main bedroom with an en suite
- Stunning kitchen with island plus separate utility area
- Versatile downstairs study/extra room ideal for office, playroom, or guest use
- Beautifully maintained garden, perfect for family enjoyment



Nearest Schools

Primary Schools: Maundene School 0.3 miles, Kingfisher Community Primary 0.4 miles, Wayfield Community Primary and Nursery Unit 0.6 miles

Secondary Schools: Bradfields School 0.6 miles,



Transport Information

Train Stations: Chatham 2.0 miles, Gillingham 2.3 miles, Rochester 2.5 miles



Address

Allen Close, Lords Wood, Chatham, Kent, ME5



Directions

For directions to this property please contact us.



Wards
Helping you move forwards

Call Walderslade Branch 01634 865661 ■ wardsofkent.co.uk



- Legal advice should be taken to verify fixtures/fittings, planning, alterations and/or lease details
- Appliances & services are untested, dimensions are approximate and floor plans are not to scale
- Through a Homewise Home For Life Plan people aged 60+ can secure this property for up to 59% less, by purchasing a Lifetime Lease



EPC RATING
CURRENT: **D(66)** POTENTIAL: **C(72)**

12144612/20260210/ML/ALH