



**Towers
Wills**

Town & Country

Ty Seidr, Rimpton Road, Marston Magna, Somerset, BA22 8DH

£575,000

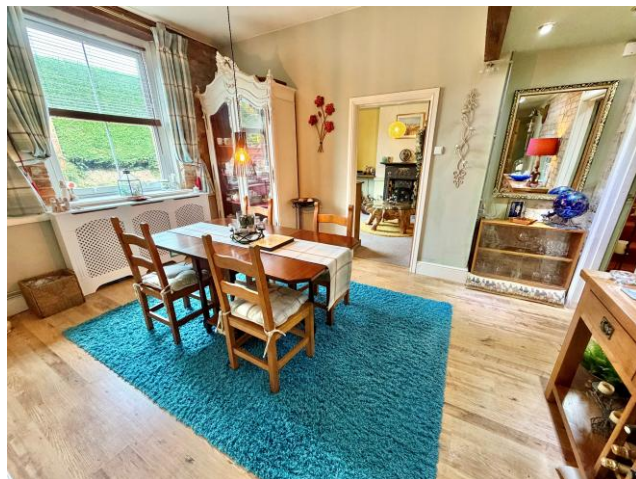
📞 01935 577 032 | 01460 298 530 | ✉ info@towerswills.co.uk



Towers Wills are delighted to present 'Ty Seidr', a handsome and substantial period home of exceptional character and charm, dating back to 1859. Constructed of natural stone beneath a pitched tiled roof, this impressive double-fronted semi-detached residence is set in the heart of this idyllic village, near the historic parish church. Occupying a generous level plot of approximately one-third of an acre, the property enjoys beautiful south-facing gardens that back onto open countryside, with the additional benefit of a brick-built stable block and extensive driveway parking for multiple vehicles.

KEY FEATURES

- Handsome Period Home (circa 1859)
- Over 3,100 sq. ft. of Accommodation
- Wealth of Character Features Throughout
- Self-Contained Annex
- Four/Five Double Bedrooms
- Three Bathrooms & Cloakroom/WC
- Impressive Kitchen/Breakfast Room & Utility
- South-Facing Gardens Extending to approx. 0.36 Acres
- Brick-Built Stable Block & Summerhouse
- Extensive Driveway Parking for Multiple Vehicles
- Countryside Views
- Sought-After Village Location





This fine period home offers over 3,100 sq. ft. of versatile accommodation, beautifully presented throughout while retaining a wealth of original features including exposed beams, flagstone flooring, high ceilings and attractive fireplaces. The property further benefits from oil-fired central heating and period-style uPVC double glazed sash windows. An adjoining self-contained annex provides excellent potential for multi-generational living or guest accommodation.

ACCOMMODATION

GROUND FLOOR

A pine-panelled entrance door opens into a welcoming entrance porch with tiled flooring, leading to the impressive reception/dining hall — a characterful space with exposed beams, natural stone elevations, high ceilings and period sash window to the front.

The **sitting room** is a superb triple-aspect reception room measuring over 28ft in length, featuring a cast iron log-burning stove set within a brick fireplace, flagstone hearth and two radiators.



A separate **snug/home office** offers an additional reception space with open fireplace and sash window to the front.

The **farmhouse-style kitchen/breakfast room** enjoys a range of bespoke units with solid beech worksurfaces, tiled surrounds, double stainless-steel sink, space for range-style oven and American fridge/freezer, and an island unit with breakfast bar. Steps rise to a **utility room** fitted with solid wood worksurfaces, cupboards, sink unit and space for appliances, leading through to two **boot rooms** and a **ground floor cloakroom/WC**.

A further **ground floor bedroom/reception room** with en suite bathroom offers great flexibility for guest accommodation.

ANNEX

A self-contained ground floor annex, accessed independently from the rear, comprises an open-plan sitting room/bedroom with kitchenette and separate shower room — ideal for a dependent relative or guest accommodation.



FIRST FLOOR

A generous landing provides access to all rooms and offers scope for a loft conversion (subject to planning). The **master bedroom** is an elegant double room with period fireplace and en suite bathroom. There are **three further double bedrooms**, a **family shower room**, and a small alcove that has been used previously as a **home office**.

OUTSIDE

The property stands within beautifully maintained grounds extending to approximately 0.36 acres. The front garden is enclosed by stone walling with path to entrance. A five-bar gate opens to the extensive driveway and turning bay, providing ample parking for numerous vehicles.

To the rear, the stunning south-facing garden enjoys a lawned area with mature planting, raised beds and seating terraces — all backing onto open countryside. There is an **attached brick-built stable block** with power and light (an ideal storage space), a **timber summerhouse** with decked terrace, garden shed, and an area suitable for a hot tub or alfresco entertaining.



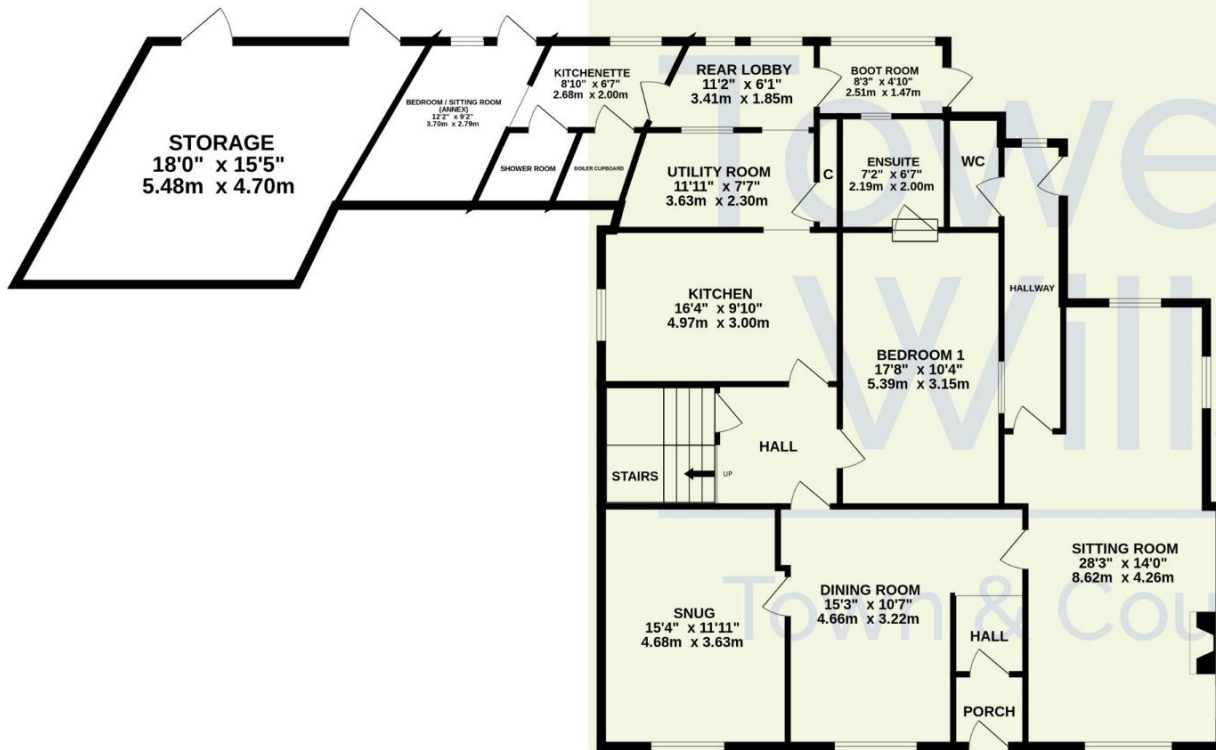
Additional features include an EV charging point, oil tank, rainwater harvesting butts and outside lighting.

SITUATION

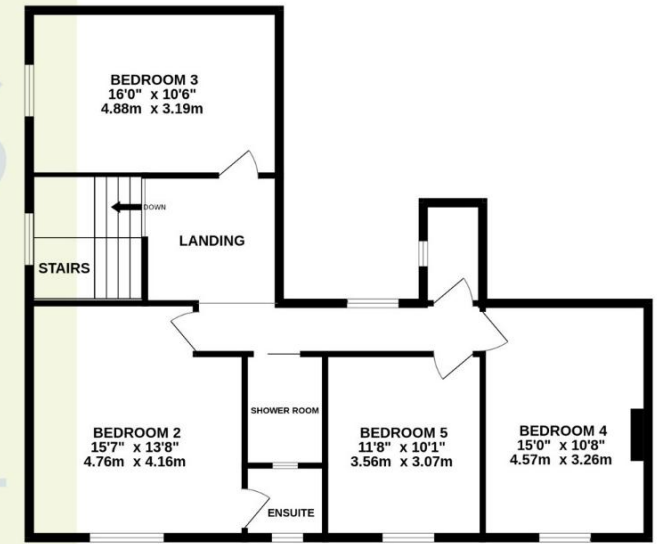
The sought-after village location offers excellent access to the nearby market towns of Sherborne and Yeovil, both providing a wide range of amenities, boutique shops, restaurants, and transport links including a mainline railway station (London Waterloo in just over two hours). Sherborne is home to its world-renowned schools and recently received *The Times Best Place to Live in the South West 2024*.



GROUND FLOOR



1ST FLOOR



Whilst every attempt has been made to ensure the accuracy of the floorplan contained here, measurements of doors, windows, rooms and any other items are approximate and no responsibility is taken for any error, omission or mis-statement. This plan is for illustrative purposes only and should be used as such by any prospective purchaser. The services, systems and appliances shown have not been tested and no guarantee as to their operability or efficiency can be given.
Made with Metropix ©2025

T: 01935 577032 E: info@towerswills.co.uk

The White House 114 Hendford Hill, Yeovil, Somerset BA20 2RF

www.towerswills.co.uk

Please Note No tests have been undertaken of any of the services and any intending purchasers should satisfy themselves in this regard. Towers Wills Ltd for themselves and for the vendor of this property whose agents they are, give notice that, (i) these particulars do not constitute any part of an offer or contract, (ii) all statements contained within these particulars are made without responsibility on the part of Towers Wills or the vendor, (iii) whilst made in good faith, none of the statements contained within these particulars are to be relied upon as a statement of representation or fact, (iv) any intending purchaser must satisfy him/herself by inspection or otherwise as to the correctness of each of the statements contained within these particulars, (v) the vendor does not make or give either Towers Wills or any person in their employment any authority to make or give representation or warranty whatsoever in relation to this property. Photographs / Floor Plans Photographs are reproduced for general information and it must not be inferred that any item is included for sale with this property. Please note floor plans are not to scale and are for identification purposes only. The photographs used in these particulars may have been taken with the use of a wide angle lens. If you have any queries as to the size of the accommodation or plot, please address these with the agent prior to making an appointment to view.