



Connells

Hart Hill Lane
Luton

Hart Hill Lane
Luton LU2 0AZ

for sale guide price
£520,000



Property Description

Connells Are Please To Offer This Four-Bedroom Semi - Detached House, Located Off Crawley Green Road. This Property Is Ideal For a Growing Family As There Are Local Transport Links Close By and Local Schools Are Within Proximity.

In Brief The Property Comprises of; Entrance Hall, Lounge, Kitchen, Conservatory, Downstairs Bathroom and Two Bedrooms To The First Floor there are Three Bedrooms and Family bathroom.

This is an opportunity not too missed!!
Viewing available by appointment!!

Entrance Porch

Cloakroom

Entrance Hall

Lounge

16' 9" x 14' 1" (5.11m x 4.29m)

Kitchen

14' 2" x 11' (4.32m x 3.35m)

Conservatory

9' x 15' (2.74m x 4.57m)

Bedroom One

16' 7" x 16' 9" (5.05m x 5.11m)

Bedroom Two

12' 3" x 10' 9" (3.73m x 3.28m)

Bedroom Three

11' x 11' (3.35m x 3.35m)

Bedroom Four

16' x 8' 1" (4.88m x 2.46m)

Room

6' 8" x 8' 8" (2.03m x 2.64m)

Outside

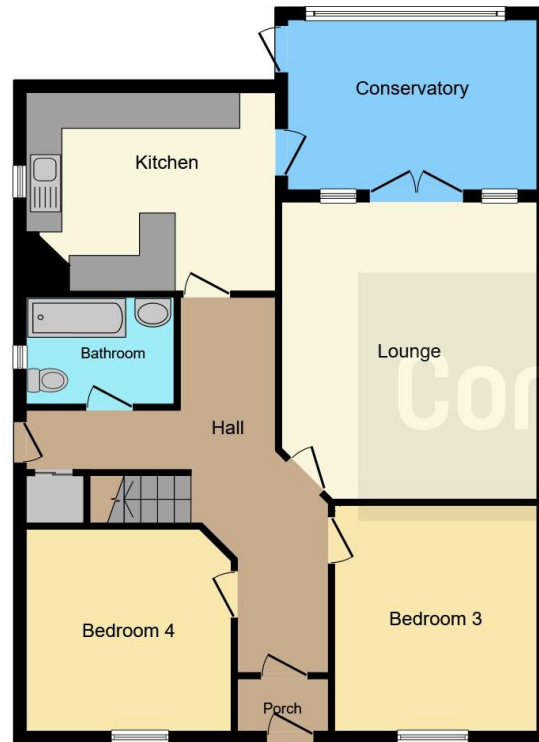
Rear Garden

Front Garden

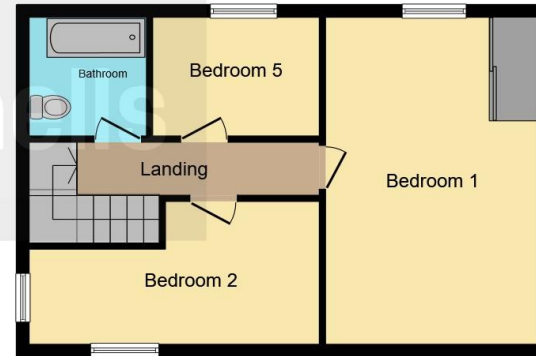








Ground Floor



First Floor

This floor plan is for illustrative purposes only. It is not drawn to scale. Any measurements, floor areas (including any total floor area), openings and orientation are approximate. No details are guaranteed, they cannot be relied upon for any purpose and they do not form part of any agreement. No liability is taken for any error, omission or misstatement. A party must rely upon its own inspection(s). Powered by www.focalagent.com

To view this property please contact Connells on

T 01582 450 999
E luton@connells.co.uk

83-83A George Street
 LUTON LU1 2AT

EPC Rating: D Council Tax
 Band: D

Tenure: Freehold

view this property online connells.co.uk/Property/LUT317473



1. MONEY LAUNDERING REGULATIONS Intending purchasers will be asked to produce identification documentation at a later stage and we would ask for your co-operation in order that there will be no delay in agreeing the sale. 2. These particulars do not constitute part or all of an offer or contract. 3. The measurements indicated are supplied for guidance only and as such must be considered incorrect. Potential buyers are advised to recheck measurements before committing to any expense. 4. We have not tested any apparatus, equipment, fixtures, fittings or services and it is in the buyers interest to check the working condition of any appliances.

Connells Residential is registered in England and Wales under company number 1489613, Registered Office is Cumbria House, 16-20 Hockliffe Street, Leighton Buzzard, Bedfordshire, LU7 1GN. VAT Registration Number is 500 2481 05.

See all our properties at www.connells.co.uk | www.rightmove.co.uk | www.zoopla.co.uk

Property Ref: LUT317473 - 0005