



Montaigne Close, SW1P

£2,000,000

This fabulous three bedroomed duplex penthouse apartment is within a secure private gated development and includes two underground parking spaces, access to a fitness centre and 24-hour concierge service.

Positioned near Vincent Square and Tate Britain, Montaigne Close is ideally located close to the many amenities of Victoria, with Pimlico, Victoria and St James's Park stations within easy reach

Features

- Three Double Bedrooms
- Three Bathrooms
- Two Parking Spaces
- Three Private Terraces
- 24-Hour Concierge
- Residents Gym

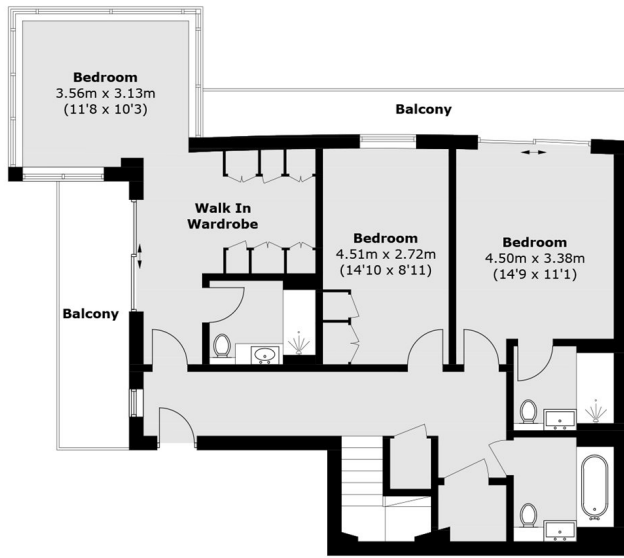


Montaigne Close, SW1P

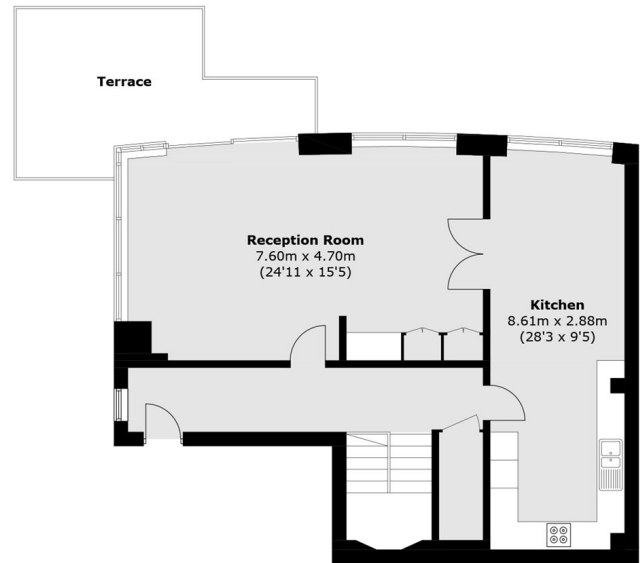
The property is in excellent condition and comprises a substantial reception room with supplementary underfloor heating and access to a decked terrace, contemporary open plan kitchen with integrated appliances and plenty of room for dining, with adjoining pantry cupboard. Downstairs comprises master bedroom with en suite shower room and private terrace, second bedroom with en suite shower room and private terrace, third bedroom, family bathroom and storage. The property benefits from comfort cooling throughout.



Montaigne Close, London, SW1P



Fifth Floor



Sixth Floor

Total area (approx.): 165.7 sq. m (1,783.6 sq. ft)
Balcony / Terrace: 33.1 sq. m (356.3 sq. ft)