



Geoffrey Close, Coventry, CV2 3GE

Property Description

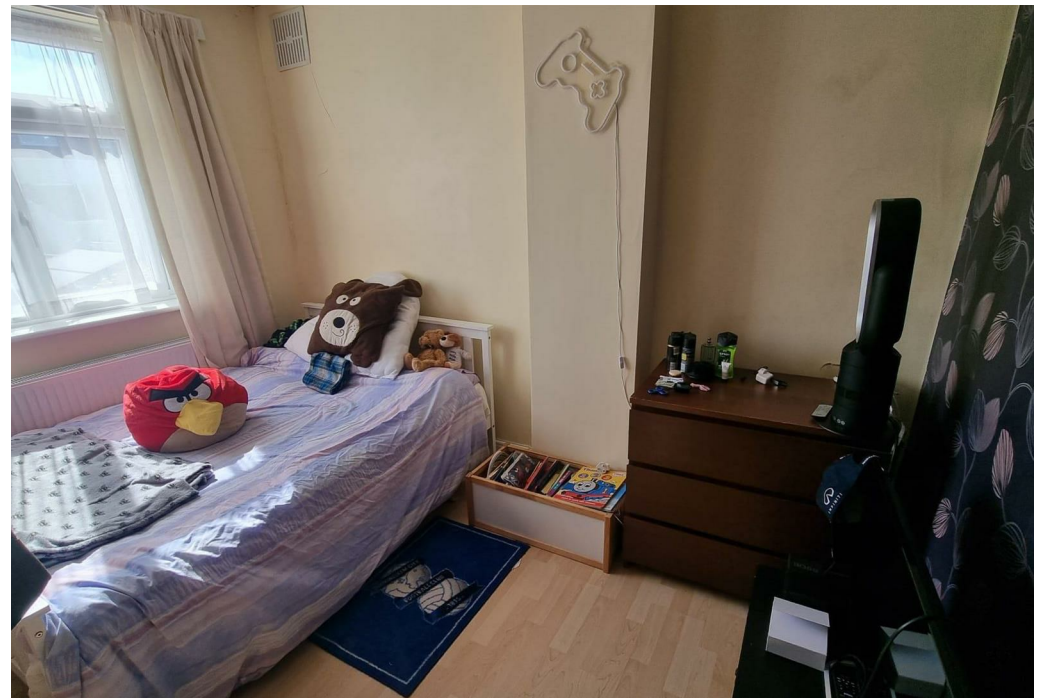
*** AVAILABLE JUNE *** This well-presented three-bedroom home is located in the popular residential area of Stoke Heath, Coventry, offering convenient access to local amenities, schools, University Hospital Coventry & Warwickshire, and major transport links.

The property comprises an entrance hallway, a bright and spacious living room, and a modern fitted kitchen/diner with oven and hob. Upstairs offers two double bedrooms, one single bedroom, and a family bathroom with bath, shower over, WC and sink.

Externally, the property benefits from a private rear garden and off-road/on-street parking.

Offered UNFURNISHED. Council Tax Band A. Energy Rating D.







Key Features

- Available June
- Upper Stoke, Coventry
- Three Bedrooms
- House
- Unfurnished
- Garden
- Private Driveway
- Council Tax Band A
- Energy Rating D

£1,200 PCM