



St. Margarets Road, NW10

£519 Per week

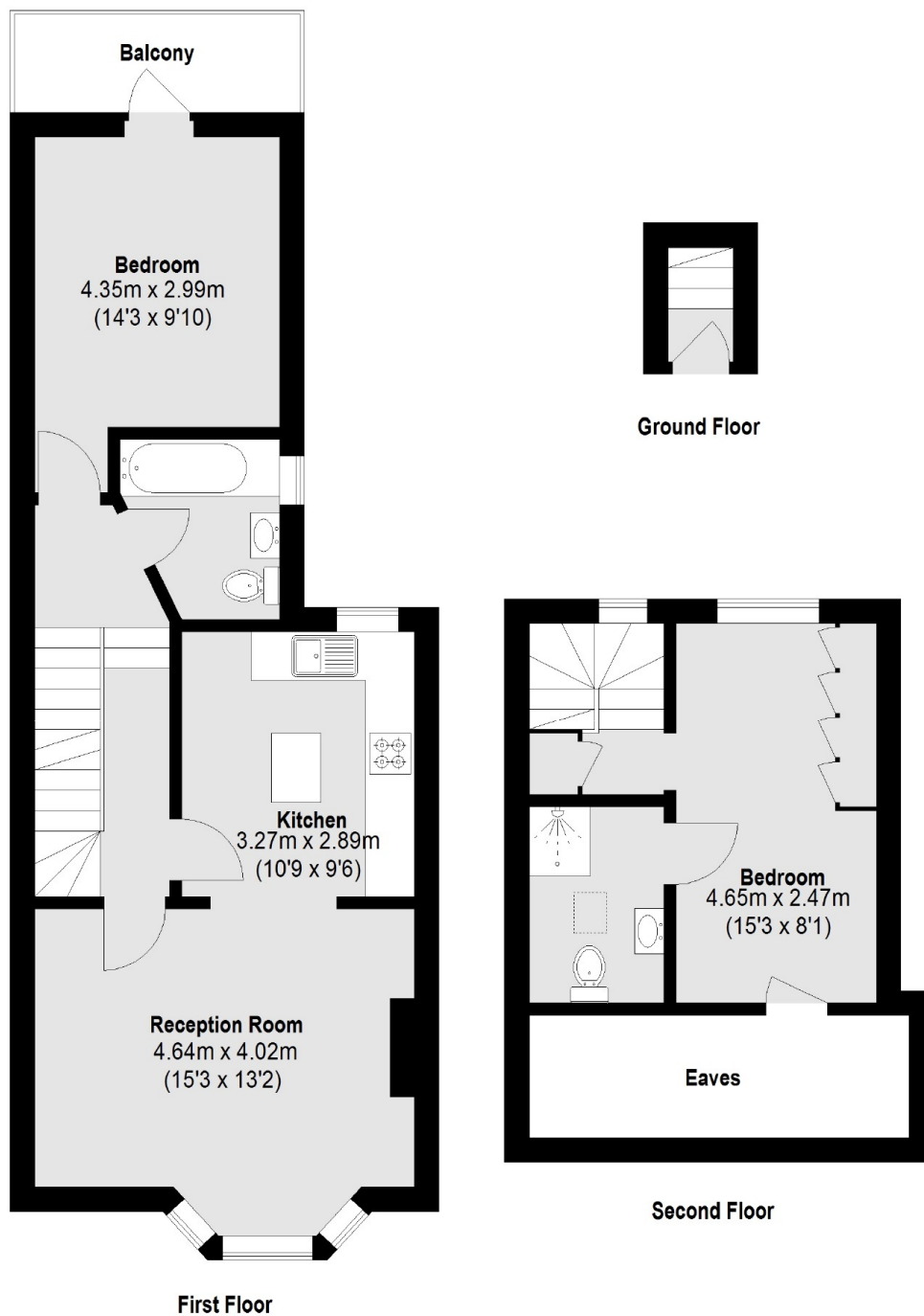
A modern and spacious two double bedroom first floor flat with a private balcony. Arranged over two floors, the property has two bathrooms, a large front facing reception and a kitchen with dishwasher and gas hob.

St. Margarets Road is close to the shops, cafes, restaurants and bars on College Road and Chamberlayne Road, and the green open spaces of Queen's Park.

Features

- Two Double Bedrooms
- Two Bathrooms
- First Floor Flat
- Modern
- Close To Transport
- Balcony

St. Margarets Road, London, NW10



Total area (approx.): 71.87 sq. m (774 Sq. ft)
(Excluding Eaves)
Balcony: 4.20 sq. m (45 Sq. ft)