



Snowdon Road, Eccles

Manchester



Offers Over £450,000



# Snowdon Road

Eccles, Manchester

Stunning extended three bed semi in a sought-after area near Monton Village. Open plan living, modern kitchen, utility, parking, and stylish bathrooms. Close to schools, hospital, and amenities.

Council Tax band: C

Tenure: Freehold

- Stunning, Three Bedroom Semi Detached Property Located within the Tree Lined Streets of a Desirable Area
- Extended to the Rear, Creating a Fabulous Open Plan Kitchen, Living and Dining Space Finished to a High Standard and Flooded with Natural Light
- Bay Fronted Lounge
- Three Generous Bedrooms
- Three Piece Family Bathroom, Downstairs Shower Room and Utility Room
- Off Road Parking For Multiple Cars
- Well Kept Rear Garden Benefitting from the Sun
- Ideal First Time Buy, Family Home or Downsize
- Surrounded by Excellent Amenities, Brilliant Transport Links and Located just a Short Walk from Monton Village & Salford Royal Hospital



HILLS



**Entrance Hallway**

9' 5" x 5' 6" (2.87m x 1.68m)

**Reception Room One**

11' 8" x 11' 7" (3.56m x 3.53m)

**Reception Room Two**

13' 9" x 11' 5" (4.19m x 3.48m)

**Kitchen / Diner**

21' 2" x 12' 3" (6.45m x 3.73m)

**Utility Room**

8' 3" x 5' 2" (2.52m x 1.58m)

**Shower Room**

7' 6" x 6' 2" (2.29m x 1.88m)

**Landing****Bedroom One**

9' 9" x 9' 8" (2.97m x 2.95m)

**Bedroom Two**

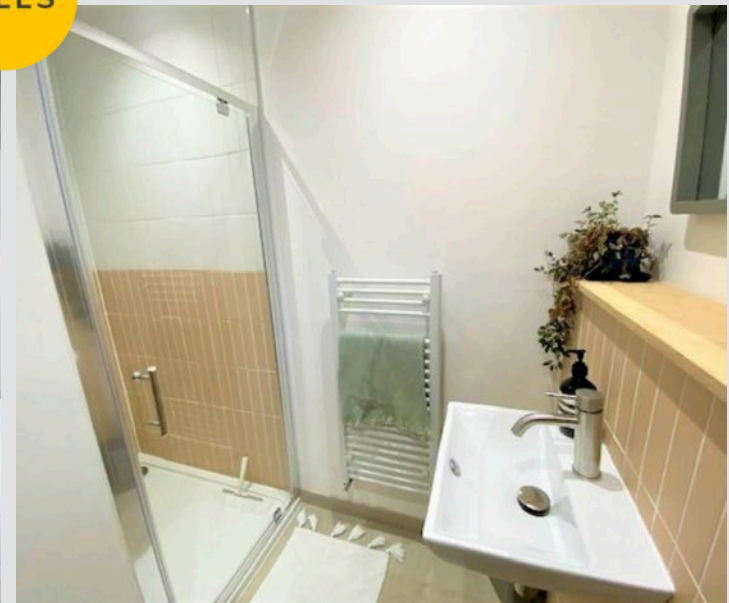
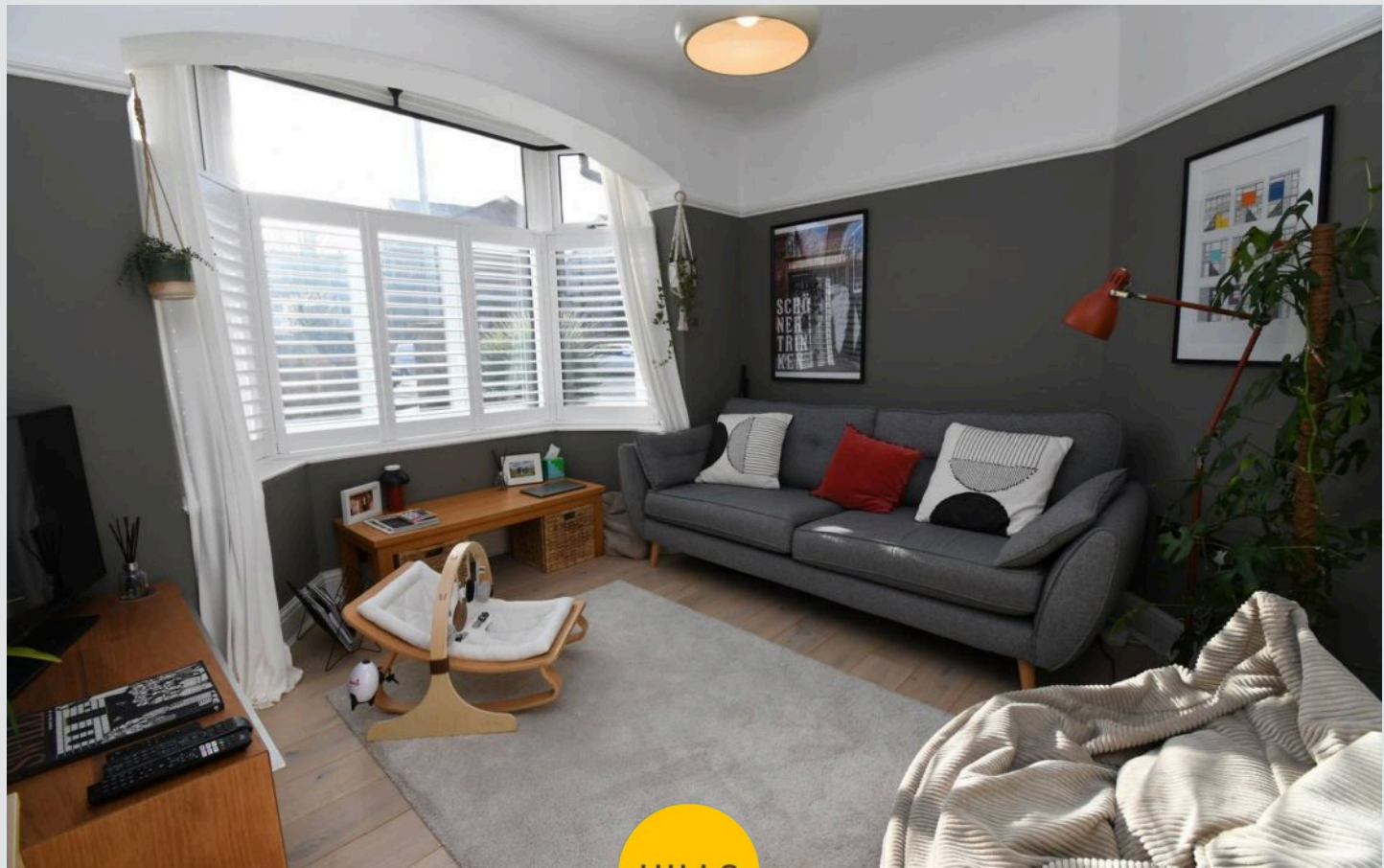
11' 6" x 11' 5" (3.51m x 3.48m)

**Bedroom Three**

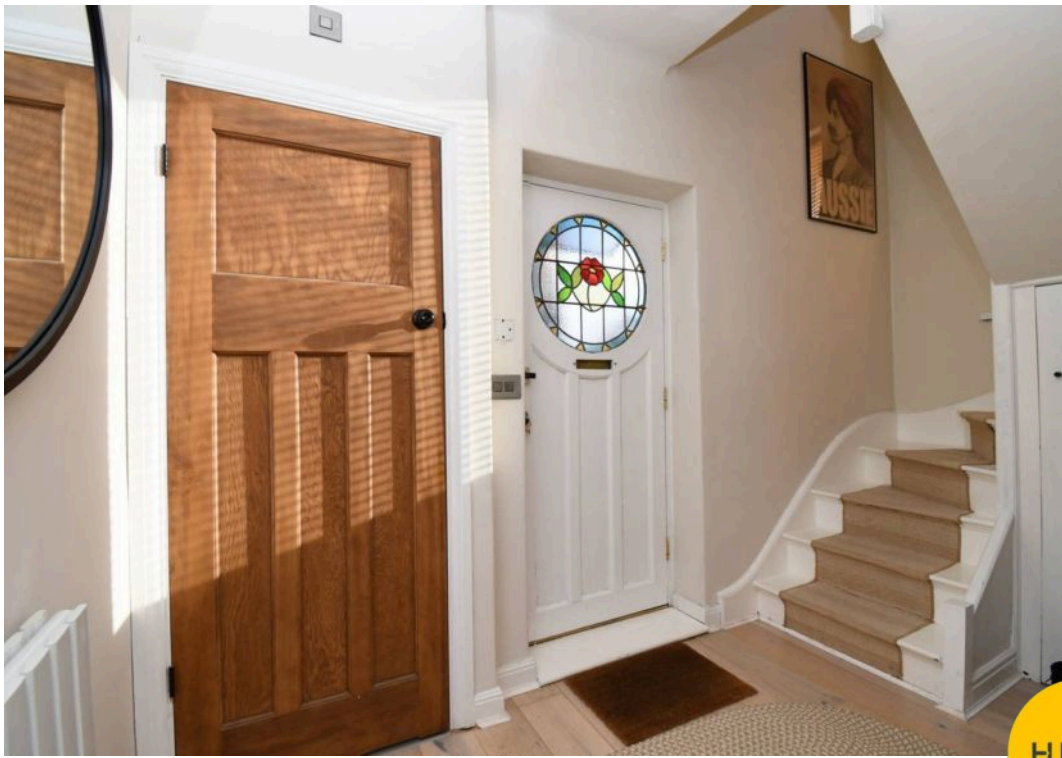
7' 8" x 8' 6" (2.34m x 2.59m)

**Bathroom**

5' 4" x 5' 1" (1.63m x 1.55m)



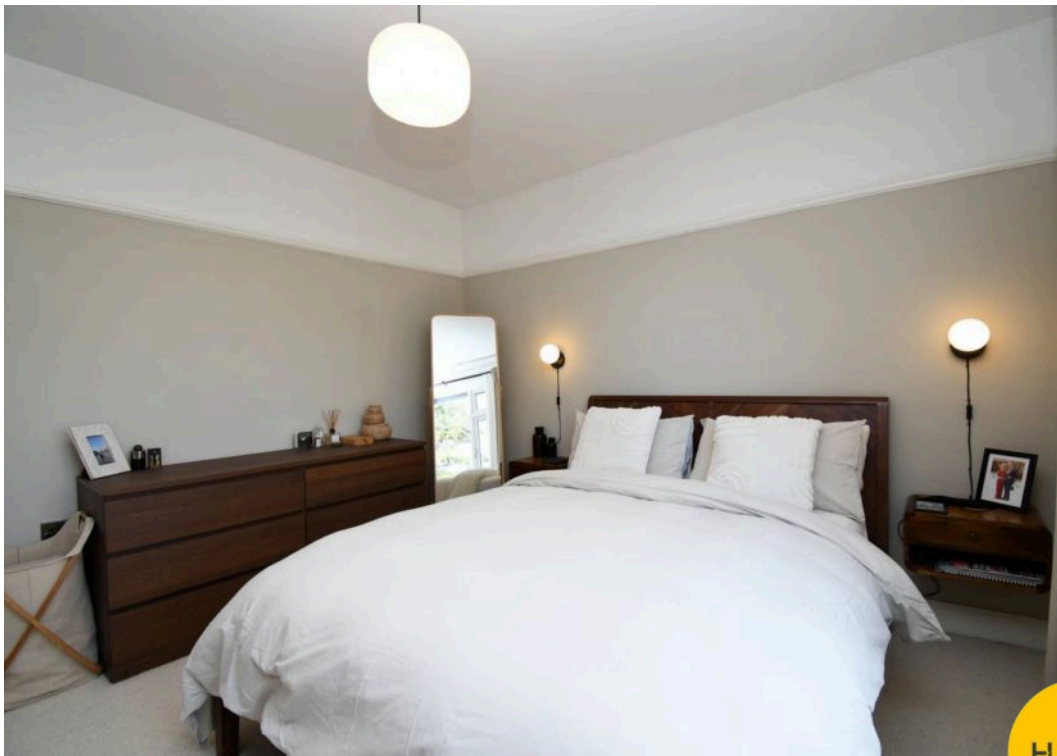




HILLS







HILLS









## Hills | Salfords Estate Agent

Hills Residential, Sentinel House Albert Street – M30 0SS

0161 707 4900

[sales@hills.agency](mailto:sales@hills.agency)

[www.hills.agency/](http://www.hills.agency/)



By law, we are required to conduct anti-money laundering checks on all potential buyers and sellers. In line with HMRC guidelines, our trusted partner, Coadjute, will securely manage these checks on our behalf. A non-refundable fee of £45 + VAT per person will apply, and Coadjute will handle the payment. Once an offer is accepted, Coadjute will send a secure link for you to complete the biometric checks. These checks must be completed before we can send the memorandum of sale to all parties. PLEASE NOTE: The Agent has not tested any equipment, fixtures, fittings or services so cannot verify that they are in working order or fit for the purpose. References to the properties tenure are based on information supplied by the seller. You are advised to check the availability of this property before travelling any distance to view. Every effort has been made to ensure these particulars are correct and not misleading but their accuracy is not guaranteed nor do they form part of any contract.