



Pond House, Abbey Road, Chertsey, KT16 8AL





Pond House is ideally positioned in a popular residential area, just a short walk from the centre of Chertsey and railway station, offering excellent convenience for commuters and easy access to local shops, cafés and amenities.

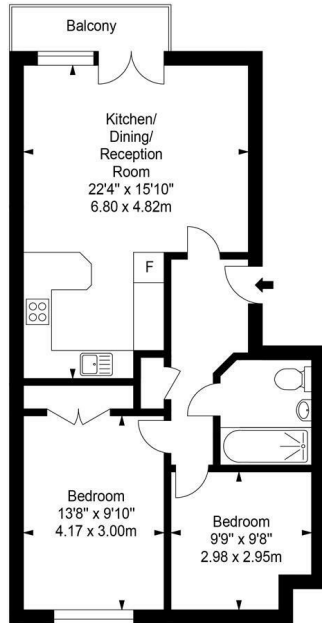
This spacious two-bedroom first floor apartment features well-proportioned accommodation throughout. The property boasts a generous open-plan living room, seamlessly flowing into a modern fitted kitchen complete with integrated appliances – perfect for both everyday living and entertaining.

There are two spacious bedrooms, including a principal bedroom with fitted wardrobes, alongside a contemporary bathroom with shower over the bath.

Further benefits include a secure entry phone system, allocated residents' parking, and additional visitor parking.

Leasehold





Approx. Gross Internal Area 674 sq ft - 62.61 sq m
For identification only - Not to scale

Every attempt is made to assure accuracy, however measurements are approximate and for illustrative purposes only. Not to scale.



EPC Rating: 82 B





Grants Homes 60 Church Street, Weybridge, Surrey, KT13 8DL
T: 01932 858885 E: addestone@grantshomes.co.uk

