



## Green Walk, SE1

### £800,000

A very smartly presented Warehouse Conversion, with large sash windows and high ceilings, a spacious open plan kitchen and living room, two double bedrooms and two bathrooms, plus secure off-street, underground parking.

The Jam Factory is one of SE1's most desirable developments, set on Rothsay Street, moments from Bermondsey Street, with London Bridge, Borough Market & the Southbank just beyond.

### Features

- Two Double Bedrooms
- Two Bathrooms
- High Ceilings & Sash Windows
- 24 Hour Concierge
- Secure Underground Parking
- Valid EWS1 Form
- Chain Free Sale



## Green Walk, SE1

This apartment is a fantastic size with a very large living space, allowing ample room for dining, a separate seating area, a large fully fitted kitchen and breakfast bar and is flooded with light due to its many sash windows.

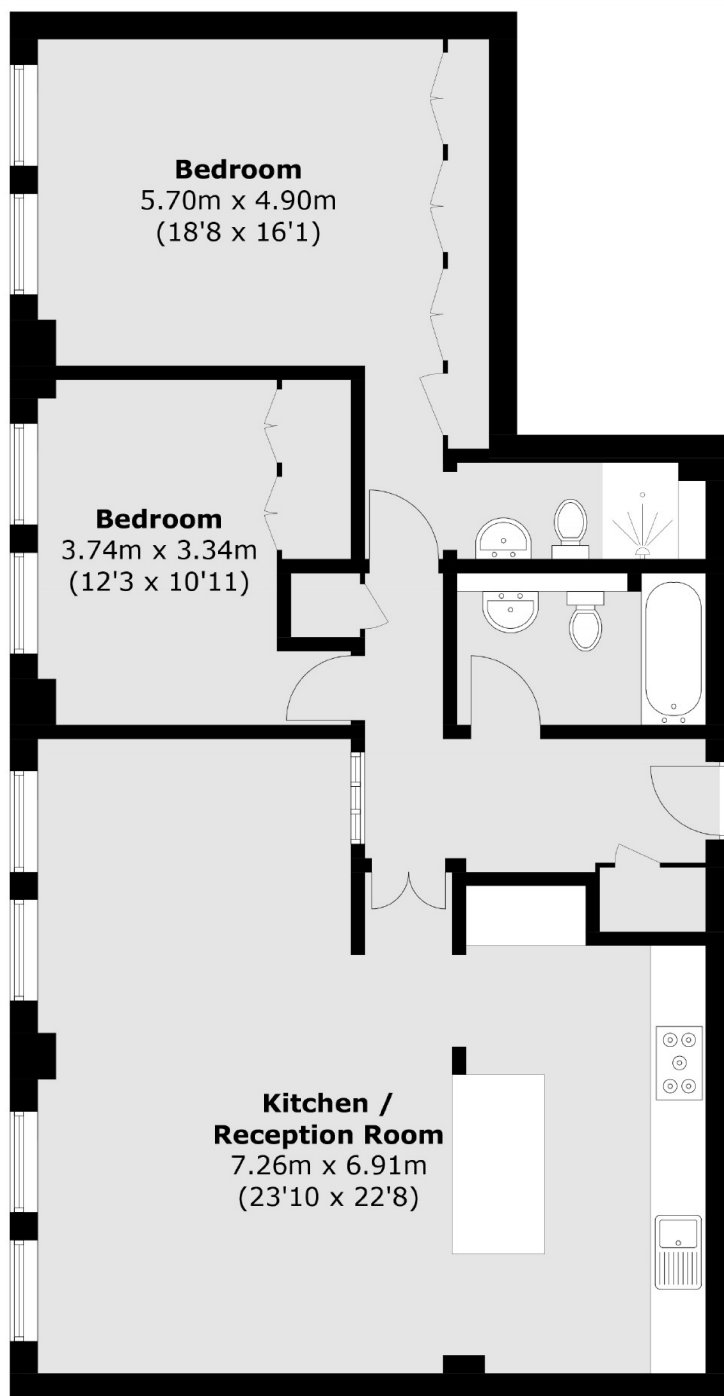
Both bedrooms are generous doubles, each with large built-in wardrobes. The master bedroom benefits from an en-suite shower room, whilst the second bedroom is served by a three piece family bathroom. Both bathrooms have been recently replaced to a high standard.

The former Hartley's Jam factory is iconic, award-winning development, with an attractive blend of period charm and contemporary design, accentuating the best original features, yet benefiting from modern fittings throughout.

Benefitting from an on-site concierge, landscaped communal gardens, walkways and a children's' play area, there is a genuine community feel here.



# Green Walk, London, SE1



Total area (approx.): 94.4 sq. m (1,016.1 sq. ft)

**Dexters**

London Bridge  
54 Borough High Street  
London  
SE1 1XL  
Sales  
020 7650 5100

Energy Rating: D. We aim to make our particulars both accurate and reliable. However they are not guaranteed; nor do they form part of an offer or contract. If you require clarification on any points then please contact us, especially if you're traveling some distance to view. Please note that appliances and heating systems have not been tested and therefore no warranties can be given as to their good working order.

 **RICS** | Regulated  
Estate Agent  
and Letting Agent

[dexters.co.uk](https://www.dexters.co.uk)