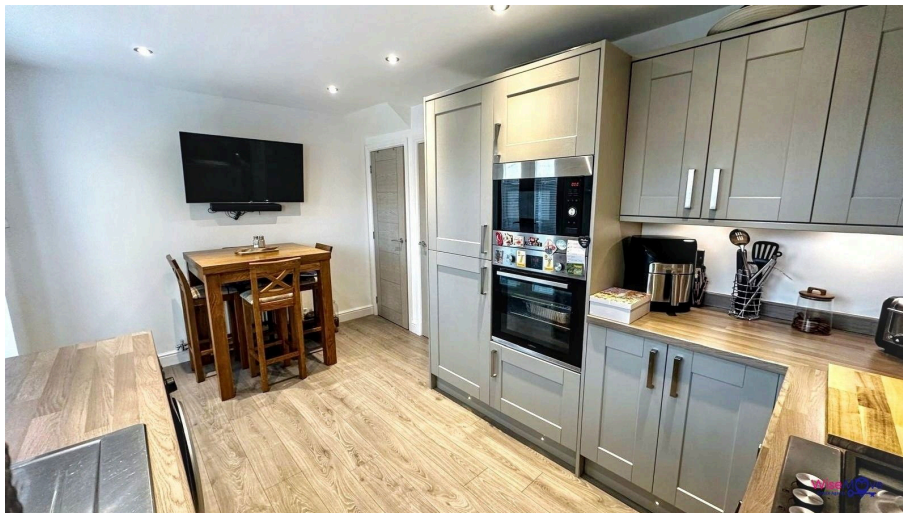




7 Somerford Walk, £210,000

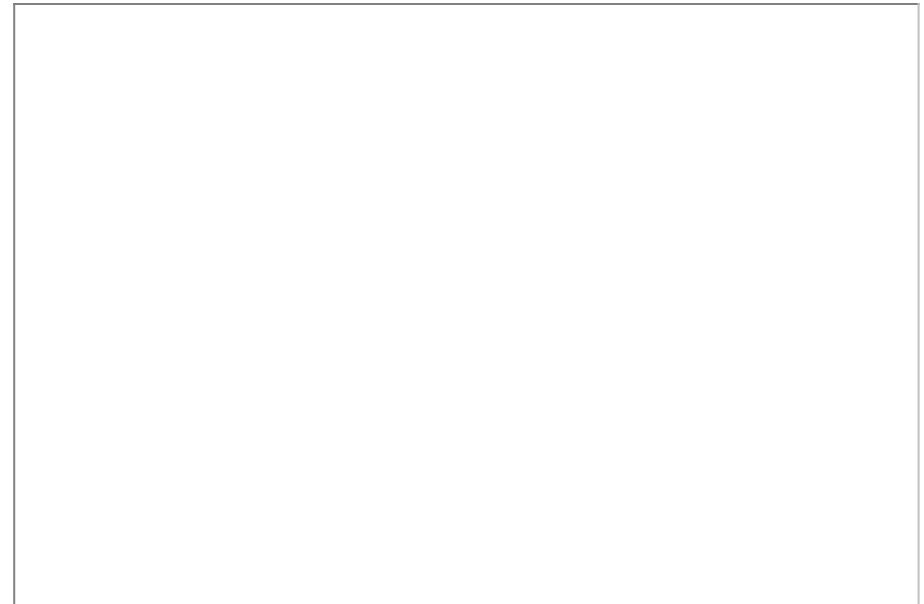
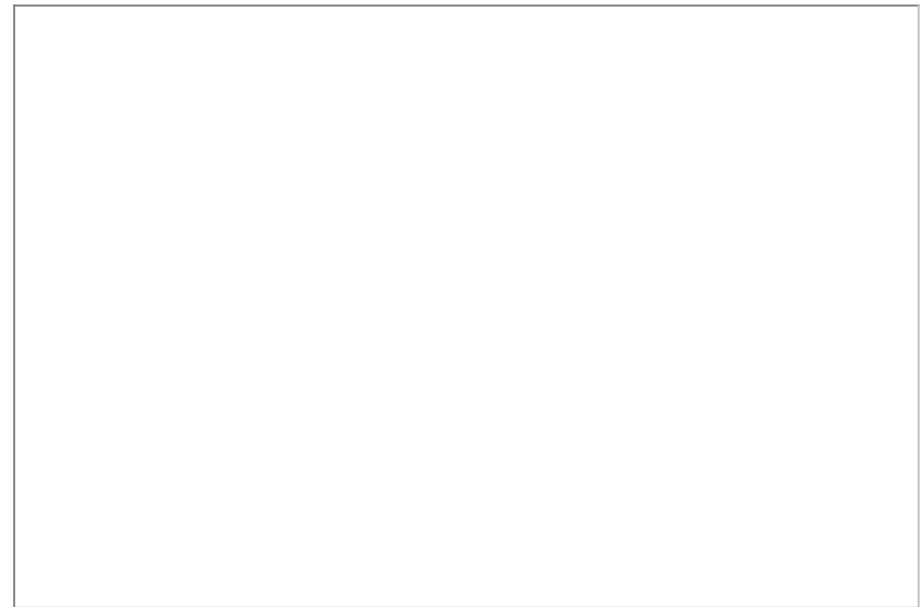
3 1 2

- Stunning home
- Turn- Key
- Entertaining area with bar
- Modern shower room
- Overlooking green space
- Low maintenance rear garden
- Kitchen/dining
- Ideally located for commuters



Tucked away in a secluded position, this exceptional three-bedroom end-terrace home has been refurbished by the current vendor to an exquisite standard throughout, offering stylish, modern living in a quiet and desirable setting overlooking green space to the front. Early viewing is advised for this turn- key home.





hello@wise-move.co.uk

Company Number:- 14695463

wise-move.co.uk
0151 424 3401

Agents Note: Whilst every care has been taken to prepare these sales particulars, they are for guidance purposes only. All measurements are approximate are for general guidance purposes only and whilst every care has been taken to ensure their accuracy, they should not be relied upon and potential buyers are advised to recheck the measurements