



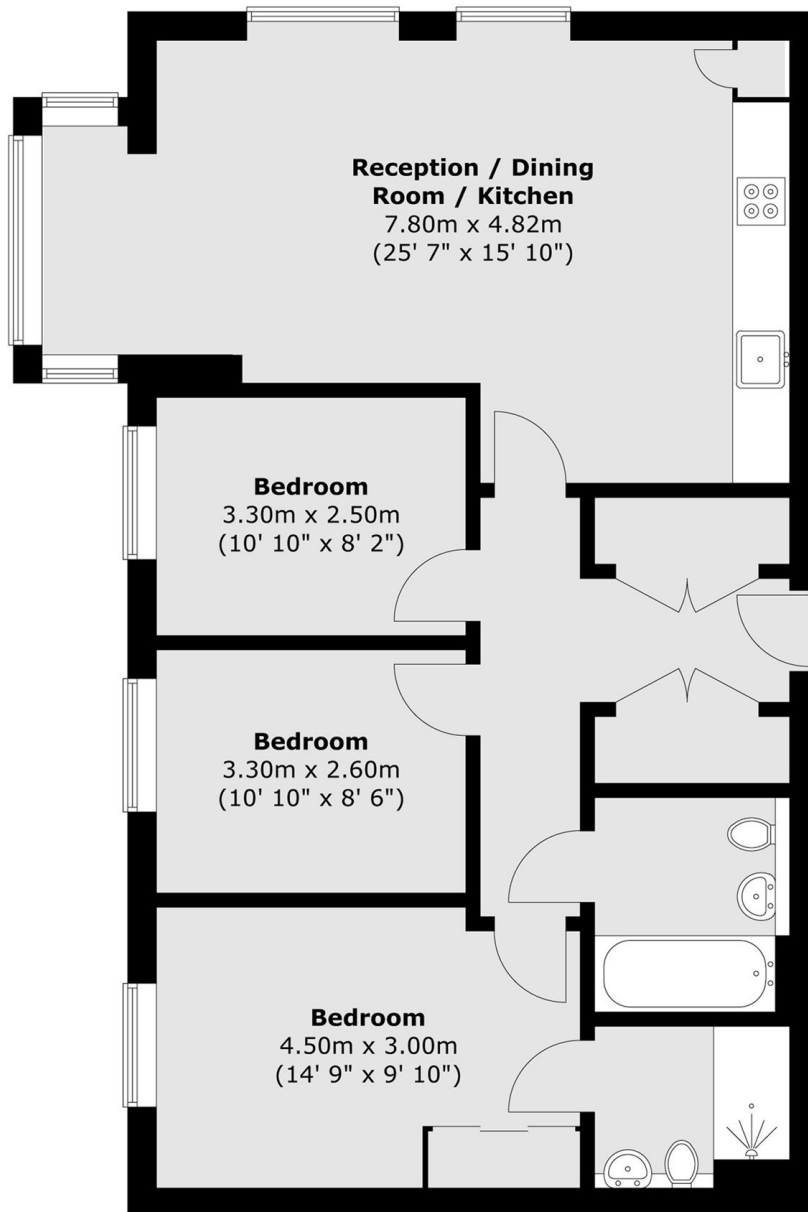
Jefferson Plaza, E3

£2,500 Per month

 2  1  2  B

- Two Bedrooms
- Office or Guest Room
- Two Bathrooms

- 24hr Concierge
- Gym & Bike Storage
- Communal Roof Terrace



Total area (approx.) : 83.7 sq. m (901 sq. ft)

35A Wapping High Street,
London, E1W 1NR
020 7702 3456
ea2group.com