



Birkbeck Grove, W3

£435,000

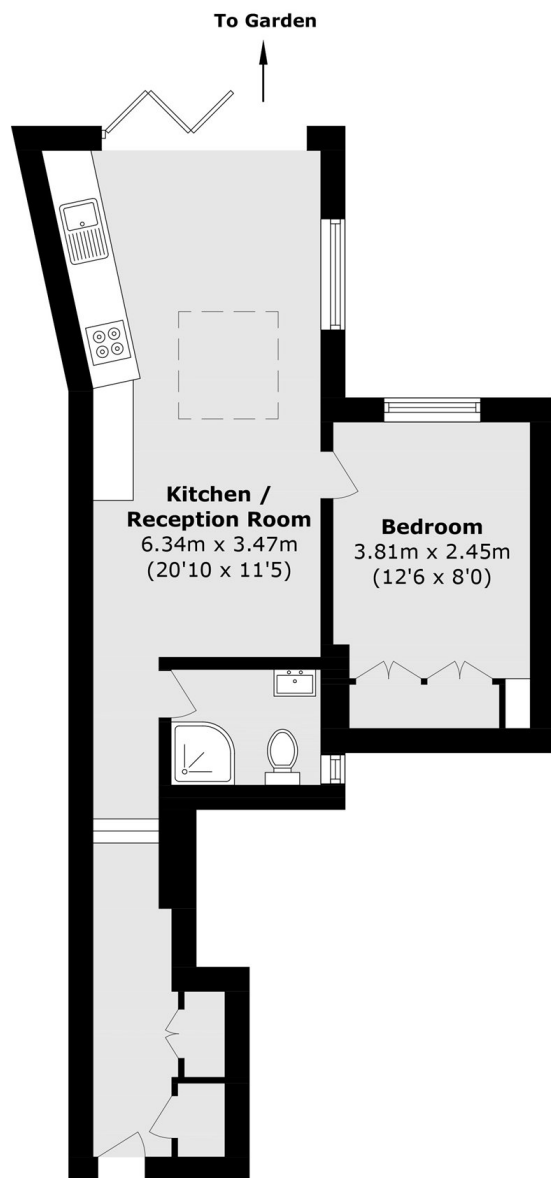
This beautifully presented one-bedroom conversion offers contemporary open-plan living, featuring a modern, fully fitted kitchen and an abundance of natural light throughout. Bi-fold doors open seamlessly onto a private, landscaped garden, creating an ideal indoor-outdoor flow. The garden also benefits from a separate outbuilding, perfectly suited for use as a home office or studio.

Less than half a mile from Acton Central station (Overground) and less than 250m from the newly built Ark Byron Primary Academy.

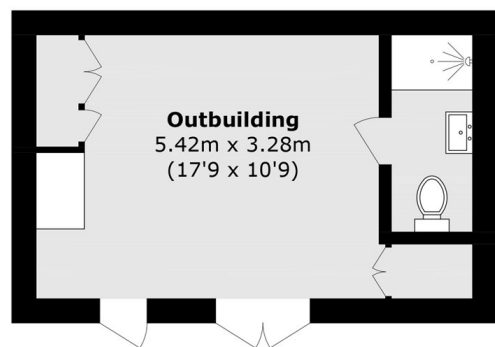
Features

- One Bedroom
- Open plan
- Private Garden
- Share Of Freehold
- Additional Outbuilding
- No Onward Chain

Birkbeck Grove, London, W3



Ground Floor



Ground Floor

Total area (approx.): 39.0 sq. m (419.7 sq. ft)
Outbuilding area (approx.): 17.7 sq. m (190.5 sq. ft)