

Habberley Park

Kidderminster





Habberley Park

Kidderminster

A taste of local life

bovishomes.co.uk

**Bovis
Homes** 



Welcome to Habberley Park

Kidderminster is a market and civil parish town in Worcestershire, boasting key commuting links to cities such as Worcester being only 30 minutes drive away, and Birmingham which is only a 50 minute drive away. Locally you'll find all the desired amenities in the superb location of Habberley Park, including local supermarkets such as Sainsbury's, Morrisons, and a Tesco.

With plenty going on in and around the market town of Kidderminster you're just a stones throw away from a romantic evening for two, a fun family day out, or an exciting group trip. Local walks and attractions offer the perfect place for those seeking some adventure, such as the local West Midlands Safari Park. The adventurer's dream also boasts an Adventure Theme Park for that added spark of fun!

Get your walking boots on and hit the tracks with Habberley Trail, perfect for taking kids into the great outdoors, challenging yourself in the wilderness, or take a more relaxed view as you amble through nature.

For those seeking a more relaxed setting, head over to the nearby town of Bewdley. The scenic place draws tourists from far and wide to marvel at its stunning architecture and quaint scenery. Take a day shopping to visit the independent caterers, restaurants and boutiques.



The perfect position

Education for everyone

There are so many schools located around the area, as well as day nurseries for the younger members of the family. Schools for the youngsters include Sutton Park Primary School and St John's Primary School.

For those seeking a further education there is Baxter College which offers a range of courses within the term timetable.

West Midland Safari Park

2.2 miles | 6 mins drive

6 mins



Kidderminster Train Station

2.6 miles | 8 mins drive

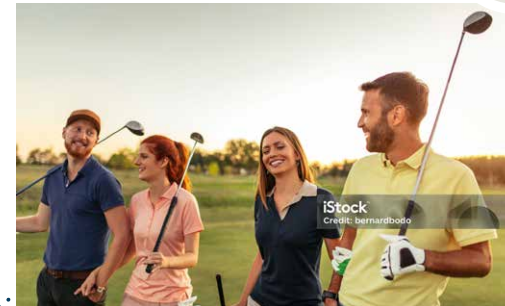
8 mins



Bewdley Pines Golf Club

1.6 miles | 4 mins drive

4 mins



Trimpley Reservoir

4.3 miles | 10 mins drive

10 mins



Wyre Forest Leisure Centre

2.9 miles | 10 mins drive

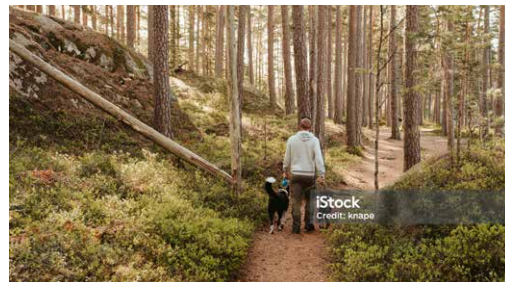
10 mins



Haberley Valley Nature Reserve

1.8 miles | 5 mins drive

5 mins



White Wickets Play Area

0.6 miles | 2 mins drive

2 mins



Kidderminster Hospital

1.4 miles | 4 mins drive

4 mins



Haberley Park



Distances and timings are approximate and for reference only. Calculated using maps.google.co.uk

A community to be proud of



We know that the area surrounding your new home is just as important as the features within your new property. As well as bringing a range of new homes to the area, we also make a commitment, these commitments are chosen based on the needs of our new community and we work with the local council to deliver them. We are proud to have invested towards **£900,000** in local schemes to support the community surrounding your new home in Kidderminster.

Our homes are **Greener by Design!** From solar panels, high class installation and EV charging points, our homes have everything you need to save on your energy bills.



Some of our **community contributions** include:

<p>IMPROVED PUBLIC TRANSPORT FACILITIES</p>	<p>PUBLIC OPEN SPACES</p>	<p>NEW COMMUNITY FACILITIES</p>	<p>CYCLE ROUTES</p>
<p>PRIMARY AND SECONDARY EDUCATION</p>	<p>PUBLIC ART</p>	<p>SPORTS AND LEISURE FACILITIES</p>	<p>HIGHWAY AND ROAD IMPROVEMENT</p>

Green initiatives found at Habberley Park:

<p>70 HEDGEHOG HIGHWAYS</p>	<p>WASTE WATER HEAT RECOVERY SYSTEMS</p>	<p>115 VEHICLE CHARGING POINTS</p>	<p>150 TREES PLANTED</p>
<p>PV PHOTOVOLTAIC SOLAR PANELS INSTALLED</p>	<p>13% BIODIVERSITY NET GAIN</p>	<p>A+ RATED DOUBLE-GLAZED WINDOWS</p>	<p>A or B AVERAGE EPC RATING</p>

Personalise your new home with upgrades and extras from our **Select** range, where the choice is yours

Customise your kitchen with stylish worktops and the latest modern appliances and personalise your bathrooms with stunning ceramics.

Using the **Select** range there are various options allowing you to create your perfect property which is truly unique to you.

You can personalise every space in your home from kitchen cupboards and electrics to built in wardrobes and if you have a preference for flooring, you can select from our diverse range that includes luxurious carpets, stylish Karndean, ceramics and vinyl.

Pick up a **Select** brochure from a sales consultant today to find an extensive list of items available, including:

- Quartz worktops
- A selection of kitchen packages including integrated appliances
- Flooring
- Built-in wardrobes
- Upgraded tiling and many more!

The choice is yours - with **Select**.



Purchase assistance schemes

Wherever you are in the home-buying market - a first-time buyer, looking to step up the property ladder or a downsizer - we have a variety of great purchase assistance schemes!

Smooth Move

Smooth Move is our scheme for all existing property owners to save time and money. We deal with the estate agents to sell your home and even pay the estate agents' fees!

Home Exchange

With Home Exchange you can have peace of mind knowing that we are your guaranteed buyer, meaning you'll have a chain-free move without the estate agents' fees.

Key Worker

Helping essential key workers get on the housing ladder with assistance from Bovis Homes and access to purchase assistance schemes requiring as little as a 5% deposit.

Armed Forces **TRINITY**

Helping members of the Armed Forces to own a home with assistance from Bovis Homes, the government and the Ministry of Defence.

Deposit Unlock



With Deposit Unlock, whether you are a first time or next time buyer, you could purchase a new Bovis Home with just a 5% deposit up to the value of £750,000!

A home designed with you in mind

We are constantly reviewing our houses and ensuring they are everything that our customers want in a home. We are proud to have developed and launched a new range of homes.

These homes have been created to embrace modern design and styling, whilst retaining classic architectural traditions

An integral part of the design process for our new range of homes was to ensure they have a real wow factor and eye-catching kerb appeal. From designing external elevations to create attractive street scenes through to maximising the flow and size of the rooms, the homes include a variety of features to capture the attention.

The size, positioning and number of windows in our new housing collection have created bright and airy homes, this mixed in with the higher ceilings gives your property a spacious feel.

The flow and layout of the new homes has been a key consideration to accommodate today's lifestyles, with a focus on future living.

With the kitchen at the heart of the home, impressive family spaces have been included within them to create sociable living areas, while attention on bedroom 1 and en suites has given the homes added desirability.

Many of the properties include popular bi-fold doors helping to bring the outside in and enhance the gardens as an extended living area.



Firm foundations means peace of mind for you

When buying a new home, you want to be sure you can trust your builder. Choosing a Bovis Home gives you the peace of mind that comes from choosing a company that has been building some of the **best homes in the UK for more than a hundred years.**

We pride ourselves on being one of the country's leading housebuilders and have established an enviable reputation for the quality of our build and design, specification and customer service.

Each Bovis Home is carefully planned both to meet your needs and to integrate into the existing location.

We will often use local materials and reflect regional features. Trees are retained wherever possible and new landscaping added, along with footpaths and cycleways in many cases to help create a wonderful place to live.

Scan me
for directions



Habberley Park
Kidderminster, Worcestershire
DY11 5RJ
01562 245 533

Cover photograph of Kidderminster. Not view from the development. The streetscene has been produced for illustrative purposes only. Please check the details of the homes you are interested in with our sales consultant.

Vistry North Central Midlands region
Dunston Hall, Dunston, Stafford, Staffordshire ST18 9AB. Telephone: 01785 788 300

Produced by the Vistry Group Design Studio.

When you have finished with this leaflet please recycle it.

110-KIDX DS08688 / 05.24

**Bovis
Homes** 

Habberley Park

Kidderminster



2 bedroom homes

- The Hawthorn
- The Elm

3 bedroom homes

- The Ash
- The Hazel
- The Spruce
- The Rose
- The Cypress
- The Beech
- The Magnolia

4 bedroom homes

- The Chestnut
- The Aspen
- The Maple
- The Briar
- The Mulberry

Pre-sold homes

- 1 and 2 bedroom apartments
- 2 bedroom homes
- 3 bedroom homes
- 4 bedroom homes
- Self-build plots
- bollards
- easements
- bcp bin collection point
- ss substation

This plan has been produced for home identification purposes only and is not to scale. The development layout, landscaping and tenure of all dwellings may be subject to change throughout the course of the development. Finishes and materials may vary from those shown on the plan. Please check the details of your chosen plot and house type with the sales consultant. Development layout plan correct at time of production.



The Hawthorn

2 bedroom home

bovishomes.co.uk

**Bovis
Homes** 

The Hawthorn

2 bedroom home

Ground floor	metres	feet / inches
Kitchen	3.78 x 2.92	12' 5" x 9' 7"
Sitting / dining area	4.07 x 3.99	13' 4" x 13' 1"

First floor

Bedroom 1	4.07 x 2.69	13' 4" x 8' 10"
Bedroom 2	4.07 x 2.82	13' 4" x 9' 3"

ovn	oven	ffzs	fridge freezer space
h	hob	cup'd	cupboard
ds	dishwasher space	◀ ▶	measuring points
ws	washing machine space		

The Hawthorn | X203 110-KIDX |

The floorplan has been produced for illustrative purposes only. Room sizes shown are between arrow points as indicated on plan. The dimensions have tolerances of + or -50mm and should not be used other than for general guidance. If specific dimensions are required, enquiries should be made to the sales consultant. The floor plans shown are not to scale. Measurements are based on the original drawings. Slight variations may occur during construction.

The illustrations shown are computer generated impressions of how the property may look and are indicative only. External details or finishes may vary on individual plots and homes may be built in either detached or attached styles depending on the development layout. Exact specifications, window styles and whether a property is left or right handed may differ from plot to plot. Please speak to our sales consultant for specific plot details.

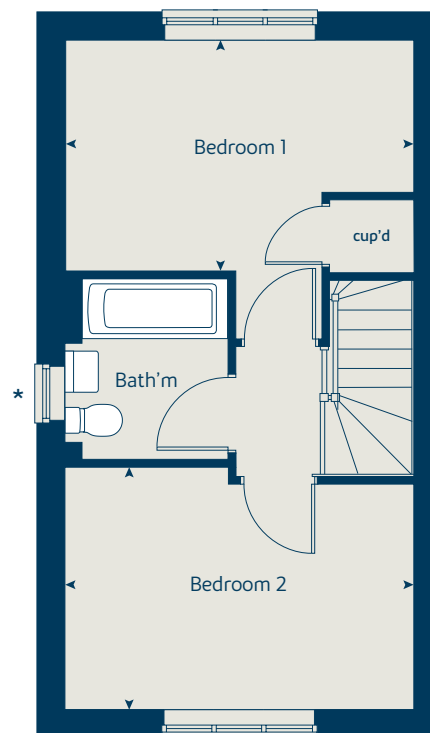
* Windows apply to selected plots only.
Please see sales consultant for further details.

Produced by the Vistry Group Design Studio.

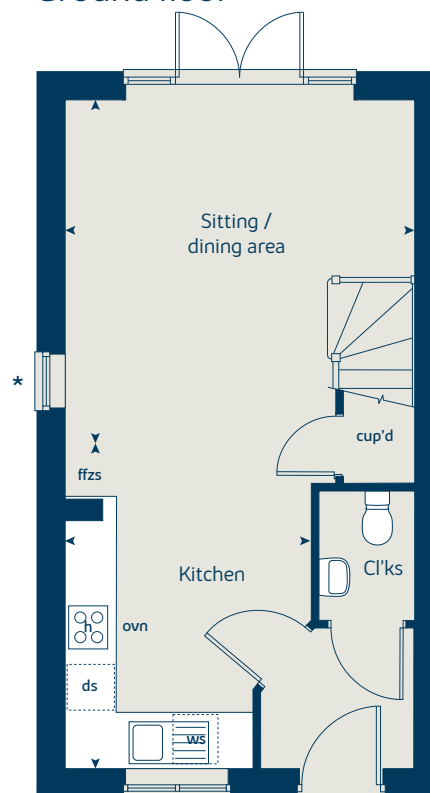
When you have finished with this leaflet please recycle it.

110-KIDX DS08688 / 05.24

First floor



Ground floor





The Elm

2 bedroom home

bovishomes.co.uk

**Bovis
Homes** 

The Elm

2 bedroom home

Ground floor	metres	feet / inches
Kitchen / dining area	3.38 x 3.12	11' 0" x 10' 2"
Sitting room	6.05 x 3.12	19' 8" x 10' 2"
Bedroom 1	4.08 x 3.79	13' 3" x 12' 4"
Bedroom 2	3.39 x 2.36	11' 1" x 7' 7"

ovn	oven	ffzs	fridge freezer space
h	hob	w	wardrobe
ds	dishwasher space	cup'd	cupboard
ws	washing machine space	< >	measuring points

The Elm | MB201 110-KIDX |

The floorplan has been produced for illustrative purposes only. Room sizes shown are between arrow points as indicated on plan. The dimensions have tolerances of + or -50mm and should not be used other than for general guidance. If specific dimensions are required, enquiries should be made to the sales consultant. The floor plans shown are not to scale. Measurements are based on the original drawings. Slight variations may occur during construction.

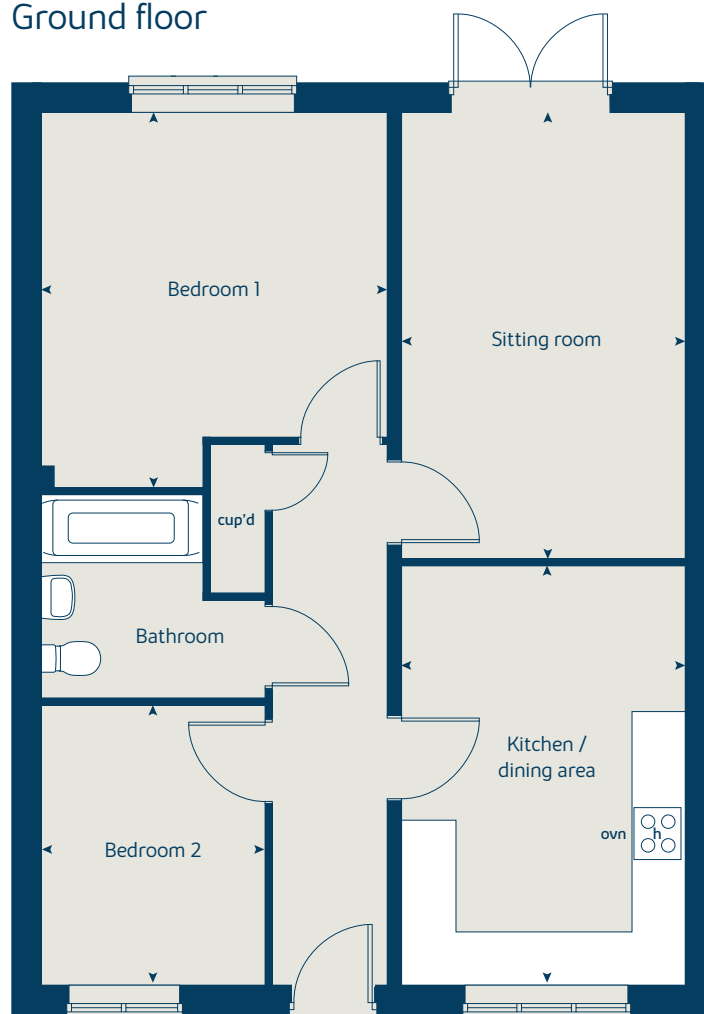
The illustrations shown are computer generated impressions of how the property may look and are indicative only. External details or finishes may vary on individual plots and homes may be built in either detached or attached styles depending on the development layout. Exact specifications, window styles and whether a property is left or right handed may differ from plot to plot. Please speak to our sales consultant for specific plot details.

Produced by the Vistry Group Design Studio.

When you have finished with this leaflet please recycle it.

110-KIDX DS08688 / 05.24

Ground floor





The Ash

3 bedroom home

bovishomes.co.uk

**Bovis
Homes** 

The Ash

3 bedroom home

Ground floor	metres	feet / inches
Kitchen / dining area	5.37 x 3.36	17' 6" x 11' 0"
Sitting room	4.18 x 3.58	13' 7" x 11' 4"
Bedroom 3	3.98 x 3.36	13' 0" x 11' 0"

First floor

Bedroom 1	4.06 x 3.90	13' 3" x 12' 7"
Bedroom 2	3.90 x 2.83	12' 7" x 9' 2"

ovn	oven	cup'd	cupboard
h	hob	w	wardrobe
ws	washing machine space	< >	measuring points
ffzs	fridge freezer space		

The Ash | MB301 110-KIDX |

The floorplan has been produced for illustrative purposes only. Room sizes shown are between arrow points as indicated on plan. The dimensions have tolerances of + or -50mm and should not be used other than for general guidance. If specific dimensions are required, enquiries should be made to the sales consultant. The floor plans shown are not to scale. Measurements are based on the original drawings. Slight variations may occur during construction.

The illustrations shown are computer generated impressions of how the property may look and are indicative only. External details or finishes may vary on individual plots and homes may be built in either detached or attached styles depending on the development layout. Exact specifications, window styles and whether a property is left or right handed may differ from plot to plot. Please speak to our sales consultant for specific plot details.

Produced by the Vistry Group Design Studio.

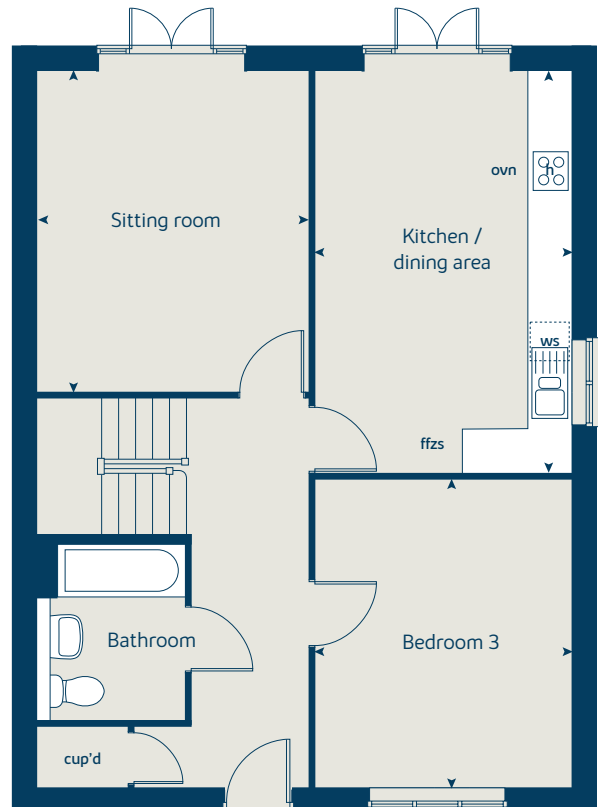
When you have finished with this leaflet please recycle it.

110-KIDX DS08688 / 05.24

First floor



Ground floor





The Hazel

3 bedroom home

bovishomes.co.uk

**Bovis
Homes** 

The Hazel

3 bedroom home

Ground floor	metres	feet / inches
Kitchen / dining room	5.19 x 2.99	17' 0" x 9' 10"
Sitting room	4.17 x 3.66	13' 8" x 12' 0"

First floor

Bedroom 1	3.54 x 3.29	11' 7" x 10' 9"
Bedroom 2	2.95 x 2.72	9' 8" x 8' 11"
Bedroom 3	3.48 x 2.15	11' 5" x 7' 1"

ovn	oven	ffzs	fridge freezer space
h	hob	cup'd	cupboard
ds	dishwasher space	w	wardrobe
ws	washing machine space	◀ ▶	measuring points

The Hazel | X305 110-KIDX |

The floorplan has been produced for illustrative purposes only. Room sizes shown are between arrow points as indicated on plan. The dimensions have tolerances of + or -50mm and should not be used other than for general guidance. If specific dimensions are required, enquiries should be made to the sales consultant. The floor plans shown are not to scale. Measurements are based on the original drawings. Slight variations may occur during construction.

The illustrations shown are computer generated impressions of how the property may look and are indicative only. External details or finishes may vary on individual plots and homes may be built in either detached or attached styles depending on the development layout. Exact specifications, window styles and whether a property is left or right handed may differ from plot to plot. Please speak to our sales consultant for specific plot details.

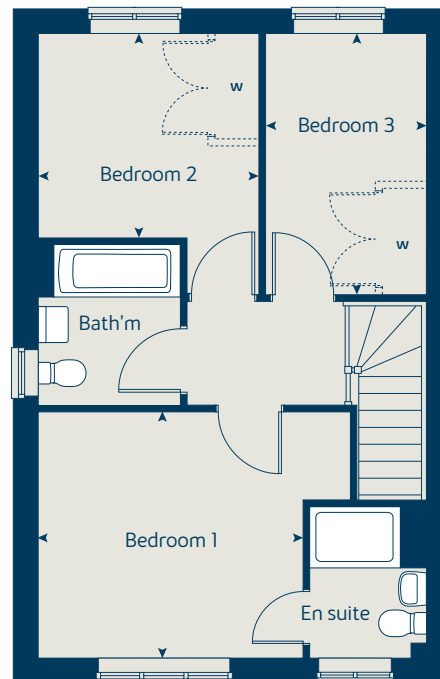
Wardrobe as standard specification if building to NDSS.

Produced by the Vistry Group Design Studio.

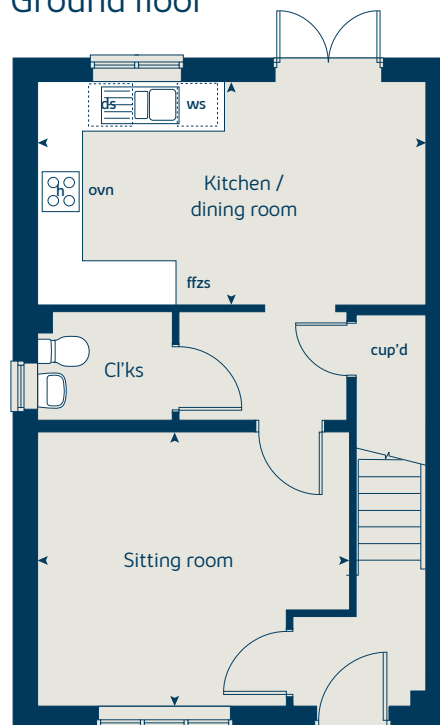
When you have finished with this leaflet please recycle it.

110-KIDX DS08688 / 05.24

First floor



Ground floor





The Spruce

3 bedroom home

bovishomes.co.uk

**Bovis
Homes** 

The Spruce

3 bedroom home

Ground floor	metres	feet / inches
Kitchen	3.16 x 2.69	10' 4" x 8' 10"
Dining area	3.14 x 2.36	10' 4" x 7' 9"
Sitting room	5.53 x 3.32	18' 2" x 10' 11"

First floor	metres	feet / inches
Bedroom 1	3.34 x 2.94	10' 11" x 9' 8"
Bedroom 2	3.60 x 3.27	11' 10" x 10' 9"
Bedroom 3	3.63 x 2.17	11' 11" x 7' 2"

ovn	oven	ffzs	fridge freezer space
h	hob	cup'd	cupboard
ds	dishwasher space	w	wardrobe
ws	washing machine space	◀ ▶	measuring points

The Spruce | X307 (IF) 110-KIDX |

The floorplan has been produced for illustrative purposes only. Room sizes shown are between arrow points as indicated on plan. The dimensions have tolerances of + or -50mm and should not be used other than for general guidance. If specific dimensions are required, enquiries should be made to the sales consultant. The floor plans shown are not to scale. Measurements are based on the original drawings. Slight variations may occur during construction.

The illustrations shown are computer generated impressions of how the property may look and are indicative only. External details or finishes may vary on individual plots and homes may be built in either detached or attached styles depending on the development layout. Exact specifications, window styles and whether a property is left or right handed may differ from plot to plot. Please speak to our sales consultant for specific plot details.

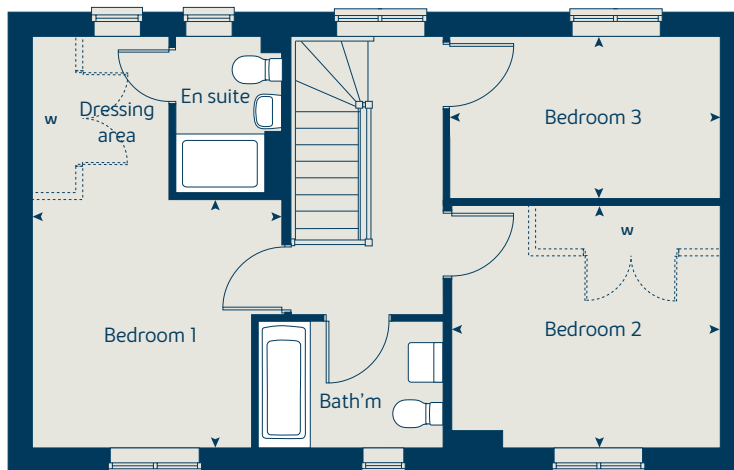
Wardrobes as standard specification if building to NDSS.

Produced by the Vistry Group Design Studio.

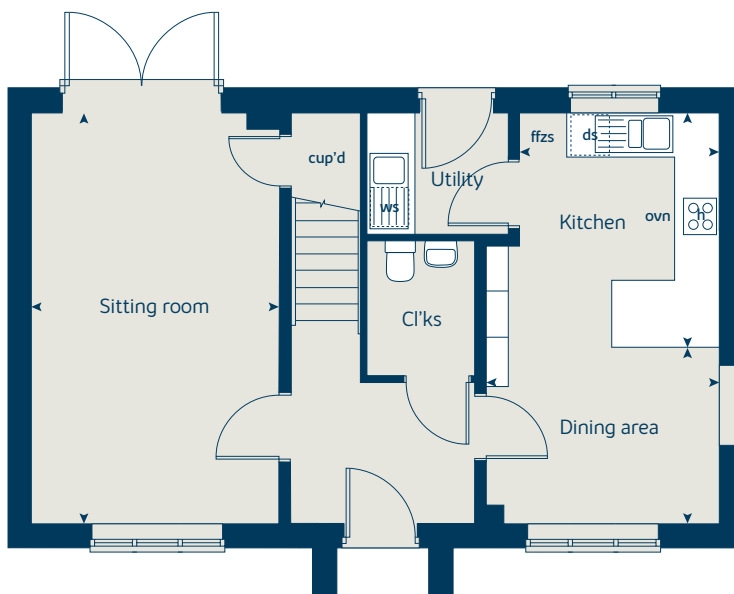
When you have finished with this leaflet please recycle it.

110-KIDX DS08688 / 05.24

First floor



Ground floor





The Rose

3 bedroom home

bovishomes.co.uk

**Bovis
Homes** 

The Rose

3 bedroom home

Ground floor	metres	feet / inches
Kitchen	3.16 x 2.69	10' 4" x 8' 10"
Dining area	3.14 x 2.36	10' 4" x 7' 9"
Sitting room	5.53 x 3.32	18' 2" x 10' 11"

First floor	metres	feet / inches
Bedroom 1	3.34 x 2.94	10' 11" x 9' 8"
Bedroom 2	3.60 x 3.27	11' 10" x 10' 9"
Bedroom 3	3.63 x 2.17	11' 11" x 7' 2"

ovn	oven	ffzs	fridge freezer space
h	hob	cup'd	cupboard
ds	dishwasher space	w	wardrobe
ws	washing machine space	◀ ▶	measuring points

The Rose | M307 (F) 110-KIDX |

The floorplan has been produced for illustrative purposes only. Room sizes shown are between arrow points as indicated on plan. The dimensions have tolerances of + or -50mm and should not be used other than for general guidance. If specific dimensions are required, enquiries should be made to the sales consultant. The floor plans shown are not to scale. Measurements are based on the original drawings. Slight variations may occur during construction.

The illustrations shown are computer generated impressions of how the property may look and are indicative only. External details or finishes may vary on individual plots and homes may be built in either detached or attached styles depending on the development layout. Exact specifications, window styles and whether a property is left or right handed may differ from plot to plot. Please speak to our sales consultant for specific plot details.

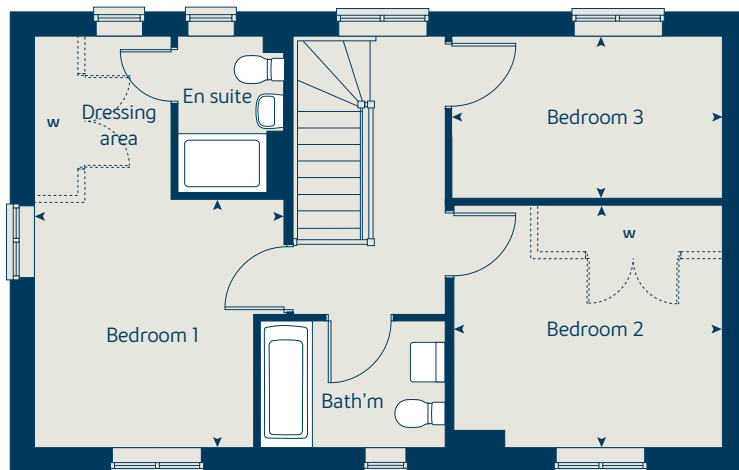
Wardrobes as standard specification if building to NDSS.

Produced by the Vistry Group Design Studio.

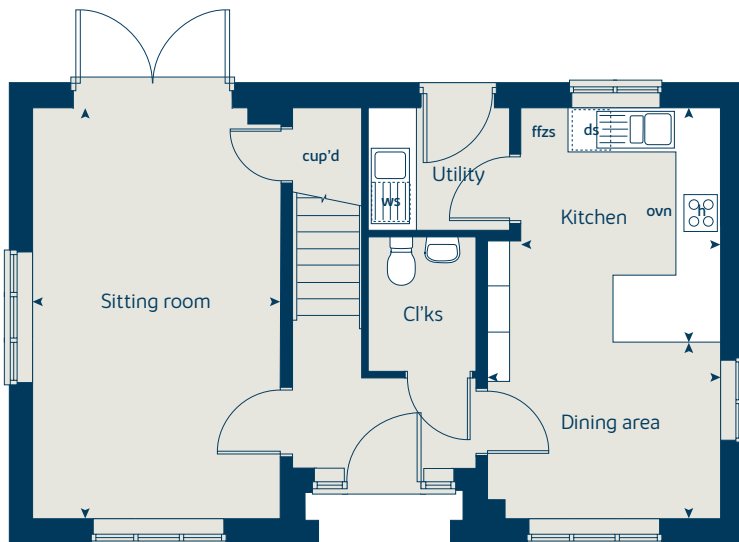
When you have finished with this leaflet please recycle it.

110-KIDX DS08688 / 05.24

First floor



Ground floor





The Cypress

3 bedroom home

bovishomes.co.uk

**Bovis
Homes** 

The Cypress

3 bedroom home

Ground floor	metres	feet / inches
Kitchen / dining area	5.52 x 3.12	18' 1" x 10' 2"
Sitting room	4.33 x 3.40	14' 2" x 11' 1"

First floor

Bedroom 1	4.09 x 3.28	13' 5" x 10' 9"
Bedroom 2	3.28 x 2.83	10' 9" x 9' 3"
Bedroom 3	3.52 x 2.16	11' 7" x 7' 1"

ovn	oven	ffzs	fridge freezer space
h	hob	cup'd	cupboard
ds	dishwasher space	w	wardrobe
ws	washing machine space	◀ ▶	measuring points

The Cypress | X308 (IF) 110-KIDX |

The floorplan has been produced for illustrative purposes only. Room sizes shown are between arrow points as indicated on plan. The dimensions have tolerances of + or -50mm and should not be used other than for general guidance. If specific dimensions are required, enquiries should be made to the sales consultant. The floor plans shown are not to scale. Measurements are based on the original drawings. Slight variations may occur during construction.

The illustrations shown are computer generated impressions of how the property may look and are indicative only. External details or finishes may vary on individual plots and homes may be built in either detached or attached styles depending on the development layout. Exact specifications, window styles and whether a property is left or right handed may differ from plot to plot. Please speak to our sales consultant for specific plot details.

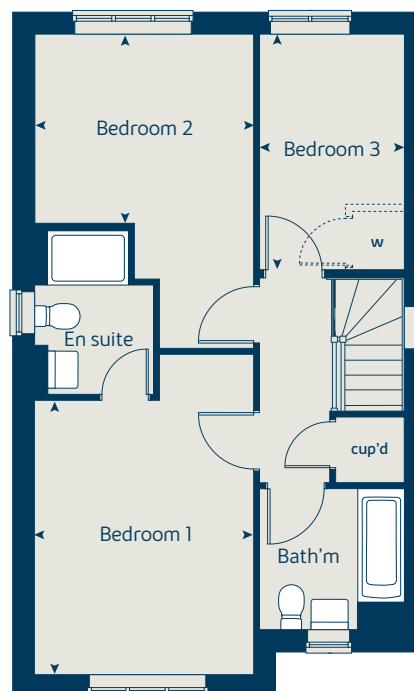
Wardrobes as standard specification if building to NDSS.

Produced by the Vistry Group Design Studio.

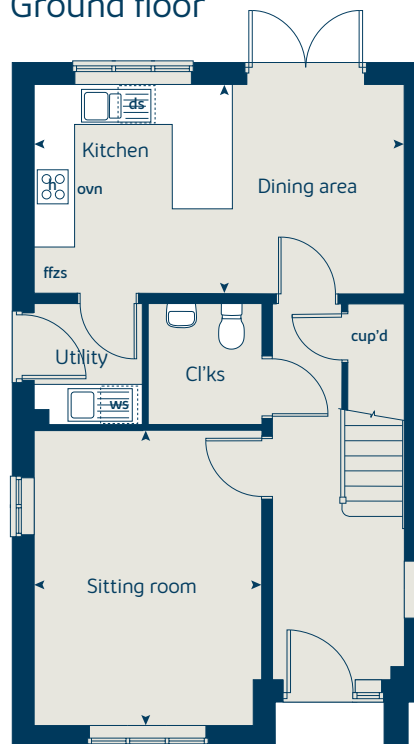
When you have finished with this leaflet please recycle it.

110-KIDX DS08688 / 05.24

First floor



Ground floor





The Beech

3 bedroom home

bovishomes.co.uk

**Bovis
Homes** 

The Beech

3 bedroom home

Ground floor	metres	feet / inches
Kitchen / dining room	4.74 x 2.93	15' 6" x 9' 7"
Sitting room	4.00 x 3.72	13' 1" x 12' 2"

First floor

Bedroom 2	4.74 x 2.62	15' 7" x 8' 7"
Bedroom 3	3.39 x 2.49	11' 1" x 8' 2"

Second floor

Bedroom 1	3.62 x 3.02	11' 11" x 9' 11"
-----------	-------------	------------------

ovn	oven	ffzs	fridge freezer space
h	hob	cup'd	cupboard
ds	dishwasher space	w	wardrobe
ws	washing machine space	< >	measuring points

The Beech | X309 110-KIDX |

The floorplan has been produced for illustrative purposes only. Room sizes shown are between arrow points as indicated on plan. The dimensions have tolerances of + or -50mm and should not be used other than for general guidance. If specific dimensions are required, enquiries should be made to the sales consultant. The floor plans shown are not to scale. Measurements are based on the original drawings. Slight variations may occur during construction.

The illustrations shown are computer generated impressions of how the property may look and are indicative only. External details or finishes may vary on individual plots and homes may be built in either detached or attached styles depending on the development layout. Exact specifications, window styles and whether a property is left or right handed may differ from plot to plot. Please speak to our sales consultant for specific plot details.

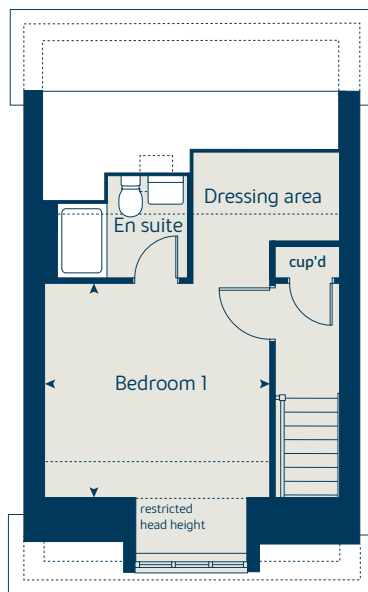
Wardrobes as standard specification if building to NDSS.

Produced by the Vistry Group Design Studio.

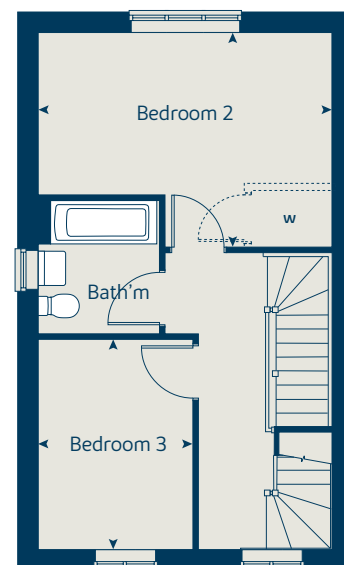
When you have finished with this leaflet please recycle it.

110-KIDX DS08688 / 05.24

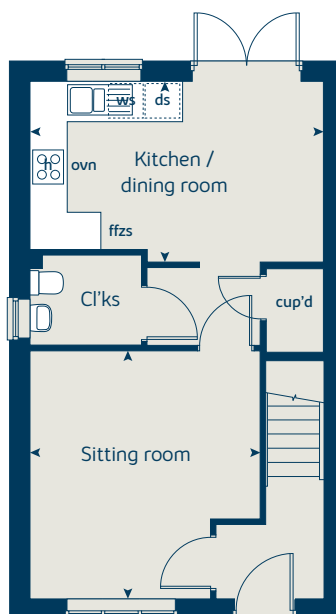
Second floor



First floor



Ground floor





The Magnolia

3 bedroom home

bovishomes.co.uk

**Bovis
Homes** 

The Magnolia

3 bedroom home

Ground floor	metres	feet / inches
Kitchen / dining room	4.74 x 3.37	15' 7" x 11' 0"
Sitting room	3.72 x 3.72	12' 2" x 12' 2"

First floor

Bedroom 1	3.06 x 2.55	10' 1" x 8' 4"
Bedroom 2	3.00 x 2.55	9' 10" x 8' 4"
Bedroom 3	2.81 x 2.10	9' 3" x 6' 11"

ovn	oven	ffzs	fridge freezer space
h	hob	ldr	larder
ds	dishwasher space	cup'd	cupboard
ws	washing machine space	◀ ▶	measuring points

The Magnolia | X327 110-KIDX |

The floorplan has been produced for illustrative purposes only. Room sizes shown are between arrow points as indicated on plan. The dimensions have tolerances of + or -50mm and should not be used other than for general guidance. If specific dimensions are required, enquiries should be made to the sales consultant. The floor plans shown are not to scale. Measurements are based on the original drawings. Slight variations may occur during construction.

The illustrations shown are computer generated impressions of how the property may look and are indicative only. External details or finishes may vary on individual plots and homes may be built in either detached or attached styles depending on the development layout. Exact specifications, window styles and whether a property is left or right handed may differ from plot to plot. Please speak to our sales consultant for specific plot details.

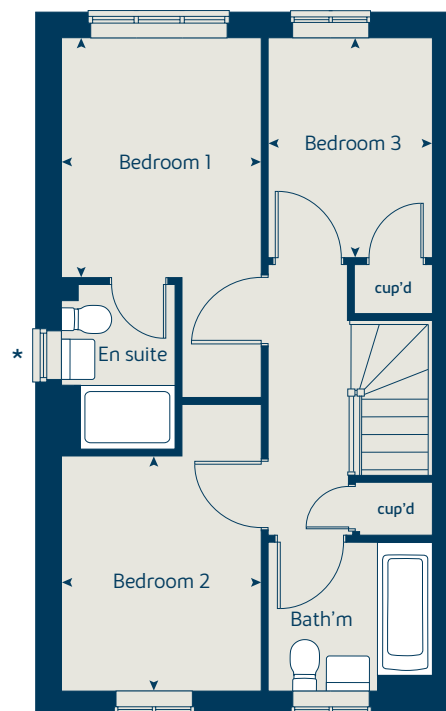
* Windows apply to selected plots only. Please see sales consultant for further details.

Produced by the Vistry Group Design Studio.

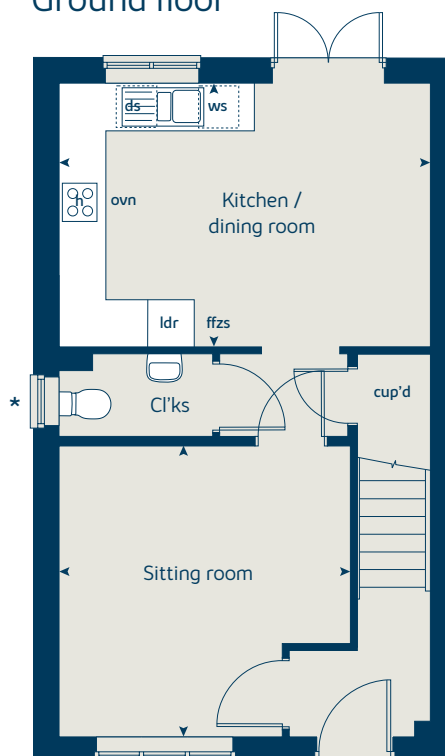
When you have finished with this leaflet please recycle it.

110-KIDX DS08688 / 05.24

First floor



Ground floor





The Chestnut

4 bedroom home

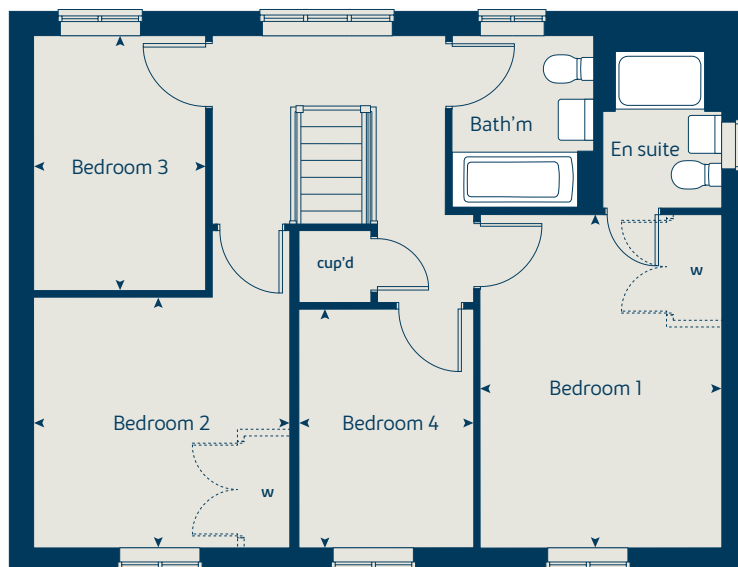
bovishomes.co.uk

**Bovis
Homes** 

The Chestnut

4 bedroom home

First floor



Ground floor	metres	feet / inches
Kitchen	4.05 x 3.05	13' 3" x 10' 0"
Dining / family area	4.60 x 2.83	15' 1" x 9' 3"
Sitting room	4.98 x 3.41	16' 4" x 11' 2"
Study	3.41 x 1.81	11' 2" x 5' 11"

First floor

Bedroom 1	3.24 x 2.98	10' 7" x 9' 8"
Bedroom 2	3.44 x 3.37	11' 3" x 11' 1"
Bedroom 3	3.42 x 2.31	11' 3" x 7' 7"
Bedroom 4	3.21 x 2.35	10' 6" x 7' 9"

ovn	oven	w	wardrobe
h	hob	ldr	larder
ds	dishwasher space	cup'd	cupboard
ws	washing machine space	◀ ▶	measuring points
ffzr	fridge freezer		

The Chestnut | X413 110-KIDX |

The floorplan has been produced for illustrative purposes only. Room sizes shown are between arrow points as indicated on plan. The dimensions have tolerances of + or -50mm and should not be used other than for general guidance. If specific dimensions are required, enquiries should be made to the sales consultant. The floor plans shown are not to scale. Measurements are based on the original drawings. Slight variations may occur during construction.

The illustrations shown are computer generated impressions of how the property may look and are indicative only. External details or finishes may vary on individual plots and homes may be built in either detached or attached styles depending on the development layout. Exact specifications, window styles and whether a property is left or right handed may differ from plot to plot. Please speak to our sales consultant for specific plot details.

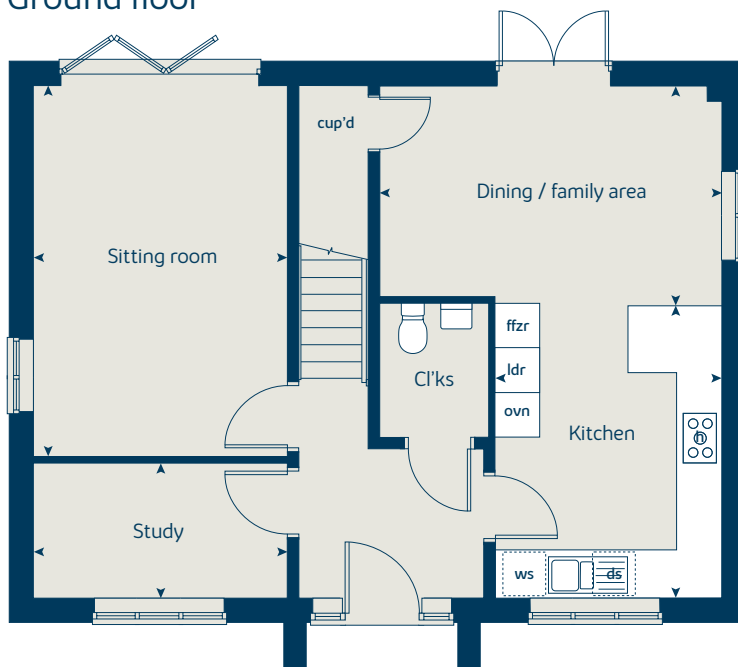
Wardrobes as standard specification if building to NDSS.

Produced by the Vistry Group Design Studio.

When you have finished with this leaflet please recycle it.

110-KIDX DS08688 / 05.24

Ground floor





The Aspen

4 bedroom home

bovishomes.co.uk

**Bovis
Homes** 

The Aspen

4 bedroom home

Ground floor	metres	feet / inches
Kitchen / dining area	7.77 x 3.37	25' 6" x 11' 1"
Sitting room	5.04 x 3.39	16' 6" x 11' 1"
Study	2.01 x 2.01	6' 7" x 6' 7"

First floor

Bedroom 1	4.52 x 3.81	14' 10" x 12' 6"
Bedroom 2	3.87 x 3.11	12' 8" x 10' 2"
Bedroom 3	4.07 x 2.42	13' 4" x 7' 11"
Bedroom 4	3.61 x 2.45	11' 10" x 8' 1"

ovn	oven	ldr	larder
h	hob	w	wardrobe
ds	dishwasher space	cup'd	cupboard
ws	washing machine space	◀ ▶	measuring points
ffzr	fridge freezer		

The Aspen | X414 (IF) 110-KIDX |

The floorplan has been produced for illustrative purposes only. Room sizes shown are between arrow points as indicated on plan. The dimensions have tolerances of + or -50mm and should not be used other than for general guidance. If specific dimensions are required, enquiries should be made to the sales consultant. The floor plans shown are not to scale. Measurements are based on the original drawings. Slight variations may occur during construction.

The illustrations shown are computer generated impressions of how the property may look and are indicative only. External details or finishes may vary on individual plots and homes may be built in either detached or attached styles depending on the development layout. Exact specifications, window styles and whether a property is left or right handed may differ from plot to plot. Please speak to our sales consultant for specific plot details.

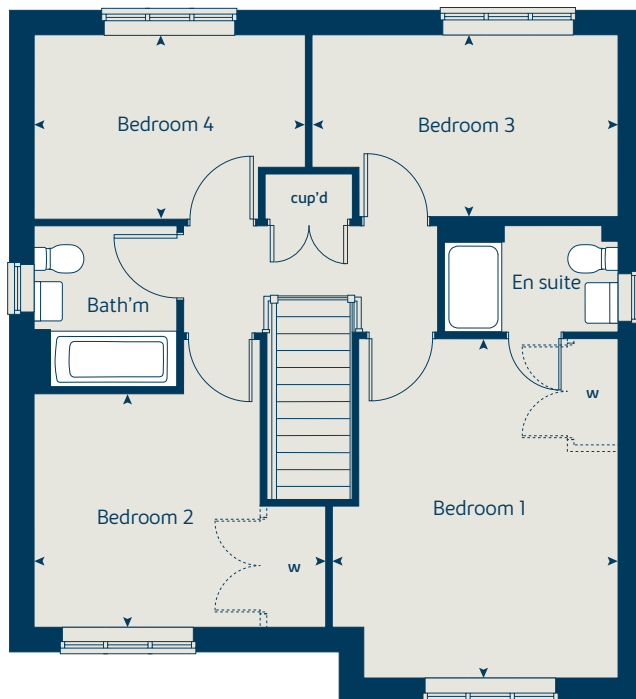
Wardrobes as standard specification if building to NDSS.

Produced by the Vistry Group Design Studio.

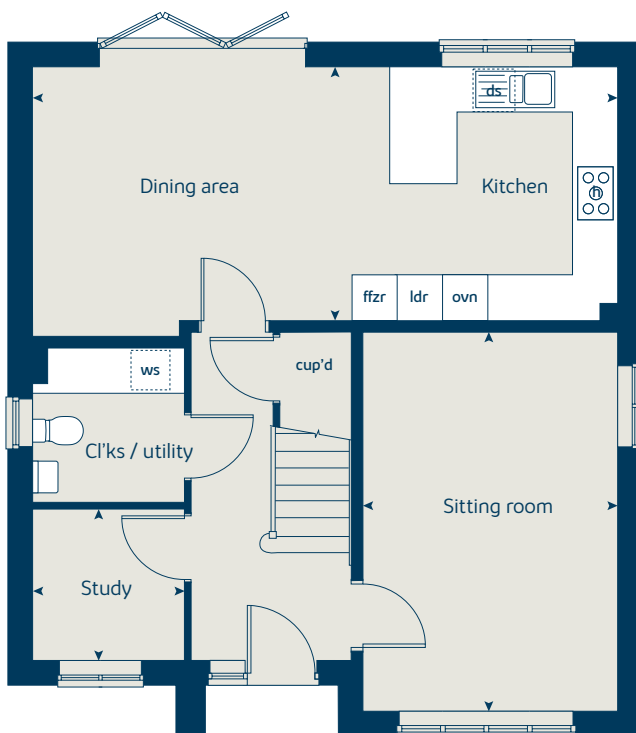
When you have finished with this leaflet please recycle it.

110-KIDX DS08688 / 05.24

First floor



Ground floor





The Maple

4 bedroom home

bovishomes.co.uk

**Bovis
Homes** 

The Maple

4 bedroom home

Ground floor	metres	feet / inches
Kitchen	3.81 x 3.50	12' 6" x 11' 6"
Family / dining area	7.28 x 3.02	23' 11" x 9' 11"
Sitting room	4.50 x 3.50	14' 9" x 11' 5"
Study	2.50 x 2.29	8' 2" x 7' 6"

First floor

Bedroom 1	3.60 x 3.50	11' 10" x 11' 5"
Bedroom 2	3.68 x 3.57	12' 0" x 11' 5"
Bedroom 3	4.17 x 2.89	13' 8" x 9' 5"
Bedroom 4	2.95 x 2.89	9' 8" x 9' 5"

ovn	oven	w	wardrobe
h	hob	cyl	hot water cylinder
ds	dishwasher space	cup'd	cupboard
ws	washing machine space	< >	measuring points
ffzr	fridge freezer		

The Maple | X416 110-KIDX |

The floorplan has been produced for illustrative purposes only. Room sizes shown are between arrow points as indicated on plan. The dimensions have tolerances of + or -50mm and should not be used other than for general guidance. If specific dimensions are required, enquiries should be made to the sales consultant. The floor plans shown are not to scale. Measurements are based on the original drawings. Slight variations may occur during construction.

The illustrations shown are computer generated impressions of how the property may look and are indicative only. External details or finishes may vary on individual plots and homes may be built in either detached or attached styles depending on the development layout. Exact specifications, window styles and whether a property is left or right handed may differ from plot to plot. Please speak to our sales consultant for specific plot details.

Wardrobe as standard specification if building to NDSS.

Produced by the Vistry Group Design Studio.

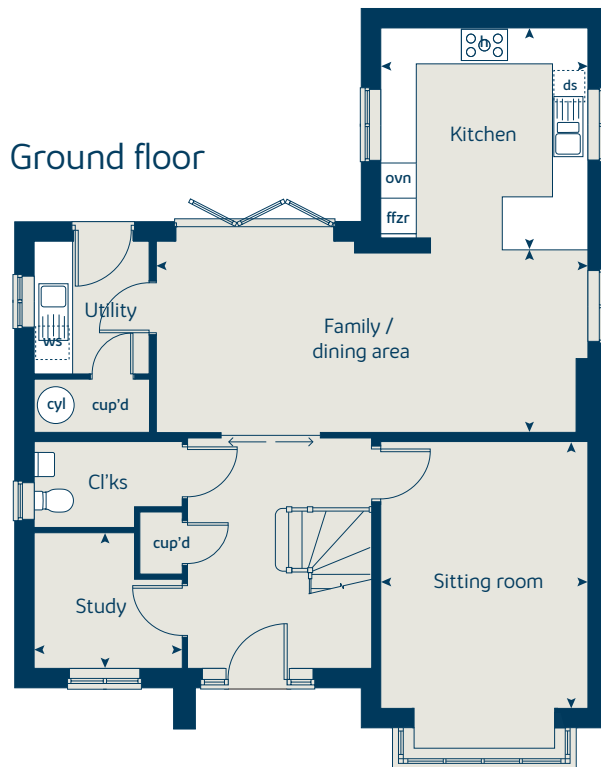
When you have finished with this leaflet please recycle it.

110-KIDX DS08688 / 05.24

First floor



Ground floor





The Briar

4 bedroom home

bovishomes.co.uk

**Bovis
Homes** 

The Briar

4 bedroom home

Ground floor	metres	feet / inches
Kitchen	3.83 x 3.04	12' 7" x 10' 0"
Dining area	4.27 x 3.04	14' 0" x 10' 0"
Sitting room	5.76 x 3.07	18' 11" x 10' 1"
Study	3.07 x 2.20	10' 1" x 7' 3"

First floor	metres	feet / inches
Bedroom 1	5.12 x 3.11	16' 10" x 10' 3"
Bedroom 2	3.86 x 3.11	12' 8" x 10' 2"
Bedroom 3	4.12 x 3.11	13' 6" x 10' 2"
Bedroom 4	3.11 x 2.86	10' 3" x 9' 5"

ovn	oven	ffzr	fridge freezer
h	hob	w	wardrobe
ds	dishwasher space	cup'd	cupboard
ws	washing machine space	◀ ▶	measuring points

The Briar | X417 (IF) 110-KIDX |

The floorplan has been produced for illustrative purposes only. Room sizes shown are between arrow points as indicated on plan. The dimensions have tolerances of + or -50mm and should not be used other than for general guidance. If specific dimensions are required, enquiries should be made to the sales consultant. The floor plans shown are not to scale. Measurements are based on the original drawings. Slight variations may occur during construction.

The illustrations shown are computer generated impressions of how the property may look and are indicative only. External details or finishes may vary on individual plots and homes may be built in either detached or attached styles depending on the development layout. Exact specifications, window styles and whether a property is left or right handed may differ from plot to plot. Please speak to our sales consultant for specific plot details.

Wardrobes as standard specification if building to NDSS.

Produced by the Vistry Group Design Studio.

When you have finished with this leaflet please recycle it.

110-KIDX DS08688 / 05.24

First floor



Ground floor





The Mulberry

4 bedroom home

bovishomes.co.uk

**Bovis
Homes** 

The Mulberry

4 bedroom home

Ground floor	metres	feet / inches
Kitchen / dining area	8.16 x 2.92	26' 10" x 9' 7"
Sitting room	4.68 x 3.72	15' 5" x 12' 3"
Study	3.43 x 2.34	11' 3" x 7' 8"

First floor

Bedroom 1	3.72 x 3.35	12' 3" x 11' 0"
Bedroom 2	3.66 x 3.43	12' 0" x 11' 3"
Bedroom 3	4.32 x 2.94	14' 2" x 9' 8"
Bedroom 4	3.75 x 2.57	12' 4" x 8' 5"

ovn	oven	ffzr	fridge freezer
h	hob	cup'd	cupboard
ds	dishwasher space	◀ ▶	measuring points
ws	washing machine space		

The Mulberry | X418 (IF) 110-KIDX |

The floorplan has been produced for illustrative purposes only. Room sizes shown are between arrow points as indicated on plan. The dimensions have tolerances of + or -50mm and should not be used other than for general guidance. If specific dimensions are required, enquiries should be made to the sales consultant. The floor plans shown are not to scale. Measurements are based on the original drawings. Slight variations may occur during construction.

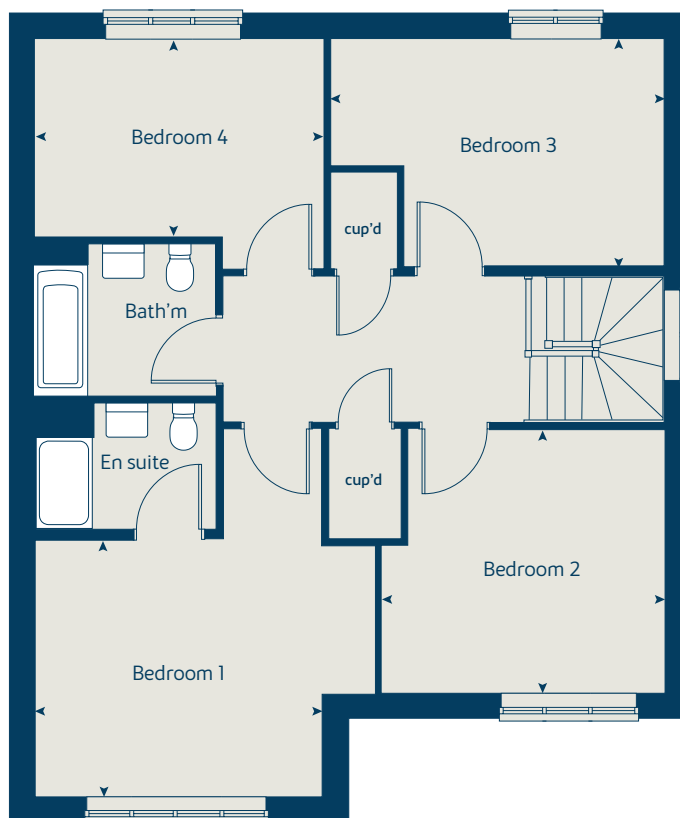
The illustrations shown are computer generated impressions of how the property may look and are indicative only. External details or finishes may vary on individual plots and homes may be built in either detached or attached styles depending on the development layout. Exact specifications, window styles and whether a property is left or right handed may differ from plot to plot. Please speak to our sales consultant for specific plot details.

Produced by the Vistry Group Design Studio.

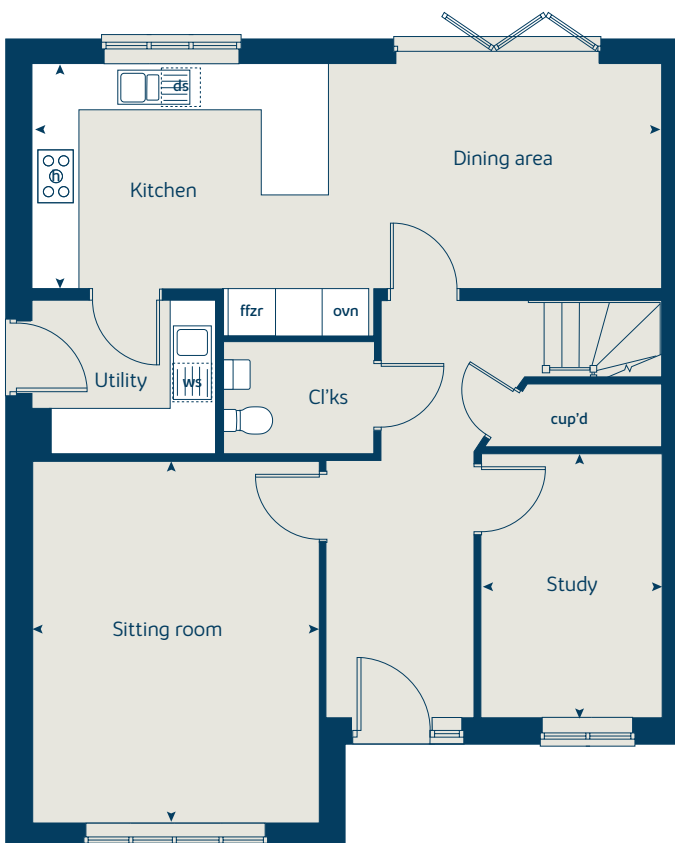
When you have finished with this leaflet please recycle it.

110-KIDX DS08688 / 05.24

First floor



Ground floor





Habberley Park

Kidderminster

Specification

bovishomes.co.uk

**Bovis
Homes** 

So much choice...

Part of the excitement of buying a new home is the thrill of being the first person to live in the property and having a brand new contemporary kitchen and modern bathroom. Our premium brand partners ensure that all of our fixtures and fittings comply with the latest Government building regulations and only branded appliances are installed in your new home.

Once you know what specification comes included, you'll have a choice from our specially selected tiles for your kitchen and bathrooms, as well as kitchen worktops and cupboard doors. You can then use the Bovis Homes **Select** brochure to add the finishing touches to your home to make it extra special for you!

From personalising your bathrooms with stunning ceramics, or adding smooth sliding wardrobes to your master bedroom, there are a wide range of additional options and upgrades available.

The availability of items is subject to the stage of build, and can vary by development and house type. Our sales consultants will be happy to provide guidance.



The specification shown is correct at the time of production. Bovis Homes is continually reviewing and updating the specification on all house / apartment types and therefore reserves the right to change specification details. Photographs depict typical Bovis Homes interiors and may include optional upgrades. For full details regarding the current specification and finishes, please speak to our sales consultant.

Produced by the Vistry Group Design Studio.

When you have finished with this leaflet please recycle it.

110-KIDX DS08688 / 05.24

**Bovis
Homes** 