

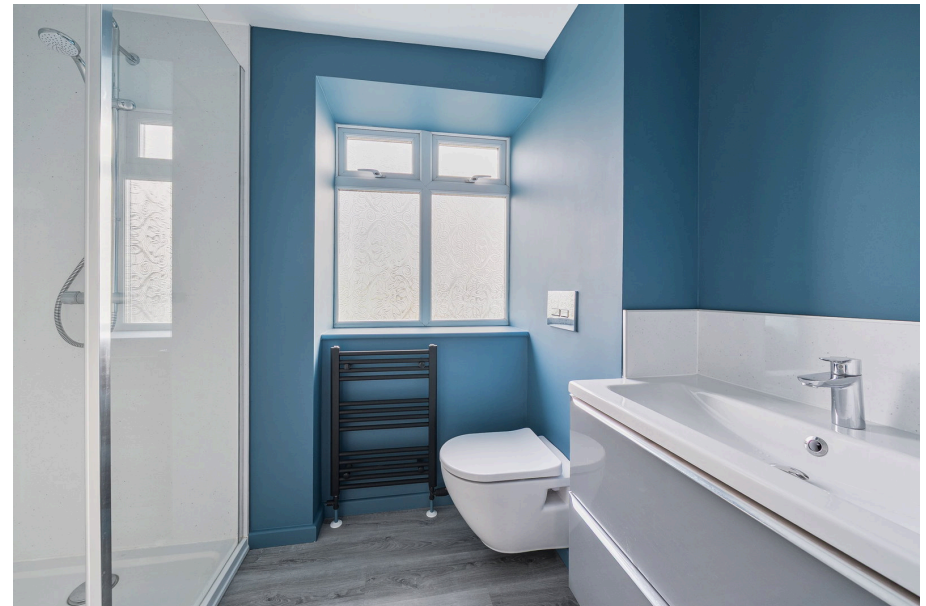


Luscombe Maye

Since 1873

St Anns Chapel, Nr Bigbury, South Devon

3 1 1



Set within the sought after South Hams village of St Ann's Chapel, 22 Hilltop is a beautifully renovated and completely turn key home, offering stylish, low maintenance living with far reaching countryside views and a wonderful sense of privacy.

Thoughtfully modernised throughout by the current owners, the property has been finished to an exceptional standard, creating a bright and energy efficient home perfectly suited to modern living and having not yet been occupied since the renovation. With replacement roof works and upgraded insulation already completed, the house offers buyers the rare opportunity to simply move straight in and enjoy both the property and its surroundings.

The accommodation is deceptively spacious and filled with natural light throughout. A welcoming entrance hall leads through to a contemporary kitchen and dining space, well equipped with integrated appliances, plentiful storage and a breakfast bar, whilst French doors open directly onto a raised sun terrace, perfectly positioned to take in the rural outlook. The adjoining sitting room is equally impressive, enjoying further French doors onto a second private terrace, creating an ideal space for entertaining, outdoor dining or simply relaxing whilst enjoying the surrounding countryside views.

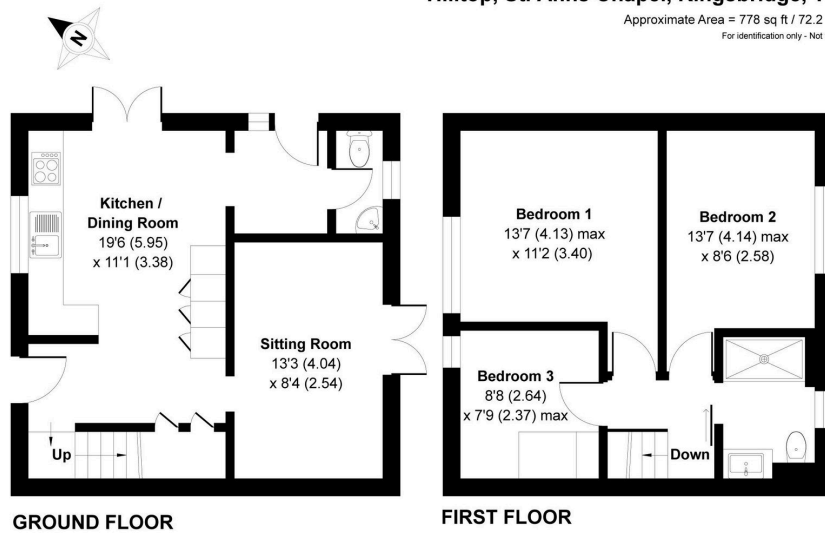
Upstairs, the property continues to impress with two generous double bedrooms, a well proportioned third bedroom currently enjoying lovely open views and a stylish modern shower room complete with large walk in shower, vanity basin, heated towel rail and WC.

Outside, the wrap around gardens have been designed for ease of maintenance whilst still providing a wonderful amount of outdoor space to enjoy throughout the day. Predominantly laid to lawn with several patio and seating areas, the gardens enjoy excellent privacy and a peaceful backdrop across the surrounding South Hams countryside. An allocated parking space is located nearby, together with additional visitor parking available on a first come, first-served basis.



Hilltop, St. Anns Chapel, Kingsbridge, TQ7

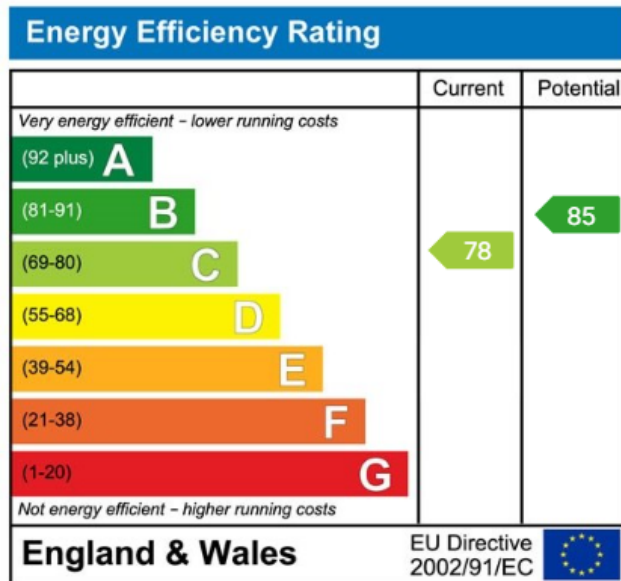
Approximate Area = 778 sq ft / 72.2 sq m
For identification only - Not to scale



Floor plan produced in accordance with RICS Property Measurement 2nd Edition, incorporating International Property Measurement Standards (IPMS2 Residential). © rchecom 2028. Produced for Luscombe Maye. REF: 1401814



- No onward chain
- Far-reaching countryside views
- Energy-efficient with replacement roof and upgraded insulation
- Modern kitchen with integrated appliances and breakfast bar
- Private wrap-around gardens with multiple seating areas
- Beautifully renovated and completely turn-key home
- Stylish contemporary interiors throughout
- Bright and spacious living accommodation
- Two private sun terraces ideal for entertaining
- Sought-after South Hams village location within walking distance of local amenities



Use the QR code for further "Material Information" about this home



Modbury:
3 Church Street, Modbury, Ivybridge PL21 0QW
01548 830831
modbury@luscombemaye.com
www.luscombemaye.com