



Brighton Grove, SE14

£625,000

An exciting opportunity to acquire one of the earliest homes built within the highly sought-after Hatcham Park Conservation Area.

This charming two-bedroom former Railwayman's cottage, dating back approximately 160 years and originally constructed for the London to Brighton line, is tucked away in a private cul-de-sac just moments from New Cross Gate station.

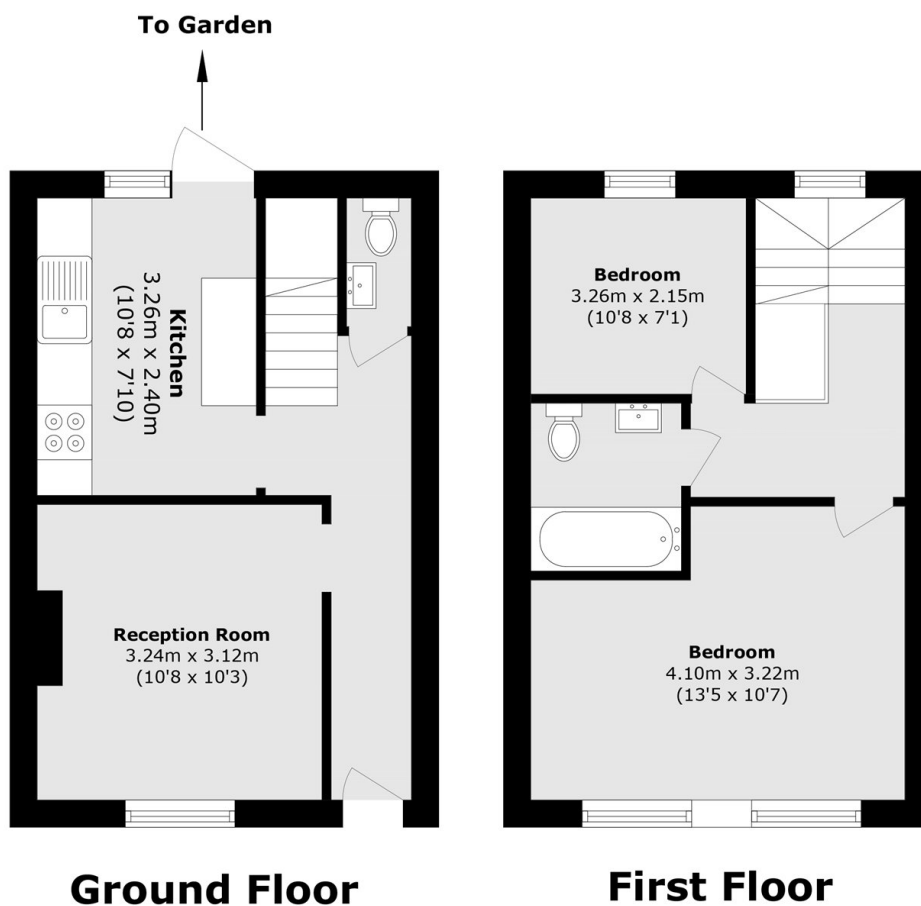
Further benefits include both front and rear gardens, providing valuable outdoor space in this desirable location.

Ideally positioned within a short walk of New Cross Gate station (Zone 2), the property enjoys excellent transport links into Central London, along with easy access to a vibrant selection of bars, cafés, and live music venues. Goldsmiths, University of London is also just a short stroll away, adding to the area's strong appeal.

Features

Former Railwayman's Cottage
Two Bedrooms
Front And Rear Garden
Hatcham Park Conservation Area
Open Plan Layout
Potential To Extend

Brighton Grove, London, SE14



Total area (approx.): 54.1 sq. m (582.3 sq. ft)
(Excluding Void)