



Ridgmount Gardens | London | WC1E

Asking Price - £5,200 Per month

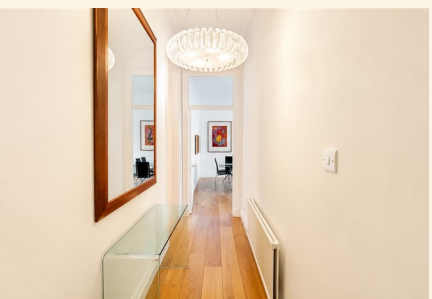


- Two double bedrooms
- Modern fully tiled bathroom
- Separate en suite
- Large, bright reception room
- Contemporary kitchen
- Wood flooring throughout
- Red-brick mansion block
- Central Bloomsbury location
- Close to UCL and transport
- Close to The British Museum

Nestled in the heart of Bloomsbury, this immaculately presented two-bedroom apartment on Ridgmount Gardens is a splendid opportunity for those seeking a stylish and comfortable home in London. Set within an attractive red-brick mansion block, this purpose-built flat boasts a generous 853 square feet of living space, making it both spacious and inviting.

Upon entering, you are greeted by a large and bright reception room, which offers ample space for dining and relaxation, creating a perfect environment for both entertaining guests and enjoying quiet evenings at home. The separate kitchen is well-equipped and finished in a contemporary style, catering to all your culinary needs.

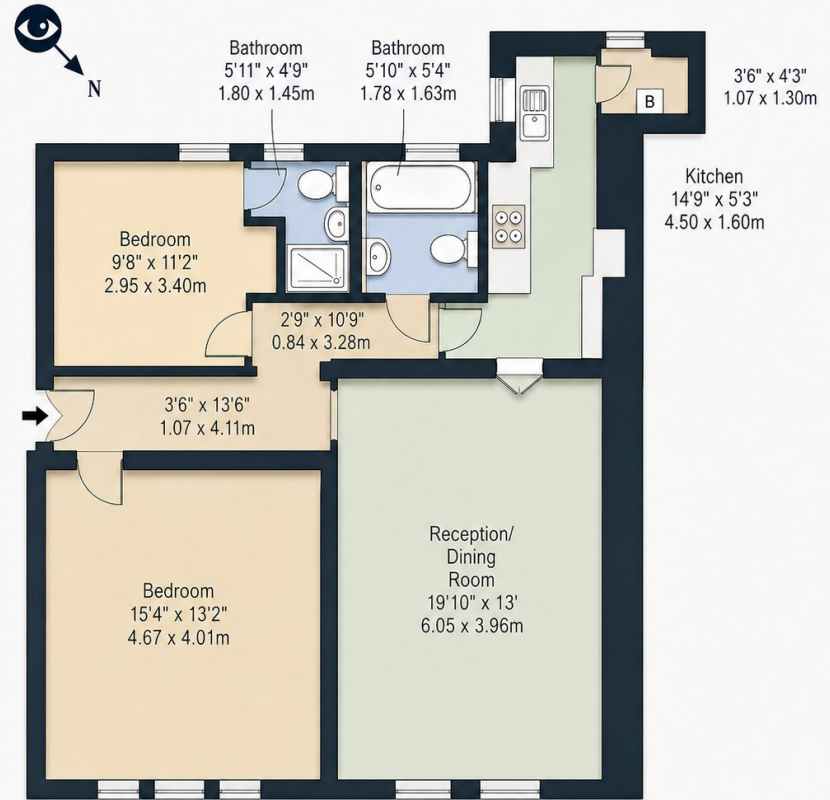




The apartment features two double bedrooms, providing plenty of room for rest and privacy. The modern fully tiled bathroom, along with a separate en suite, adds a touch of luxury and convenience to your daily routine. Throughout the property, elegant wood flooring enhances the clean and well-maintained presentation, making it a delightful space to live in.

This property is ideally located between Gower Street and Tottenham Court Road, ensuring excellent access to the vibrant West End, Fitzrovia, and the wider central London area. With University College London just moments away, this location is perfect for students and professionals alike. Excellent transport links are at your doorstep, with Goodge Street station providing Northern line services, Tottenham Court Road station offering Central, Northern, and Elizabeth line connections, and Warren Street station within easy reach for Northern and Victoria line services. Euston Square further enhances accessibility with connections to the Circle and Hammersmith lines.

# Ridgmount Gardens, WC1E 7AT

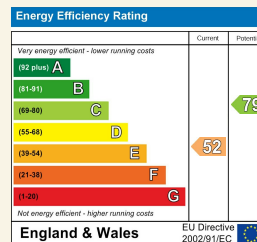


Second Floor

Approx Gross Internal Area 853 Sq Ft - 79.24 Sq M

For Illustration Purposes Only - Not To Scale

Council Tax Band F EPC Rating E



24 Bristol Gardens  
 London  
 W9 2JQ  
 hello@draperlondon.com  
 0203 143 1900