



Oxford Street, W1D

£600 Per week

A spacious and contemporary one double bedroom apartment on the second floor of this well maintained building, centrally located in the heart of the West End overlooking the world famous Oxford Street.

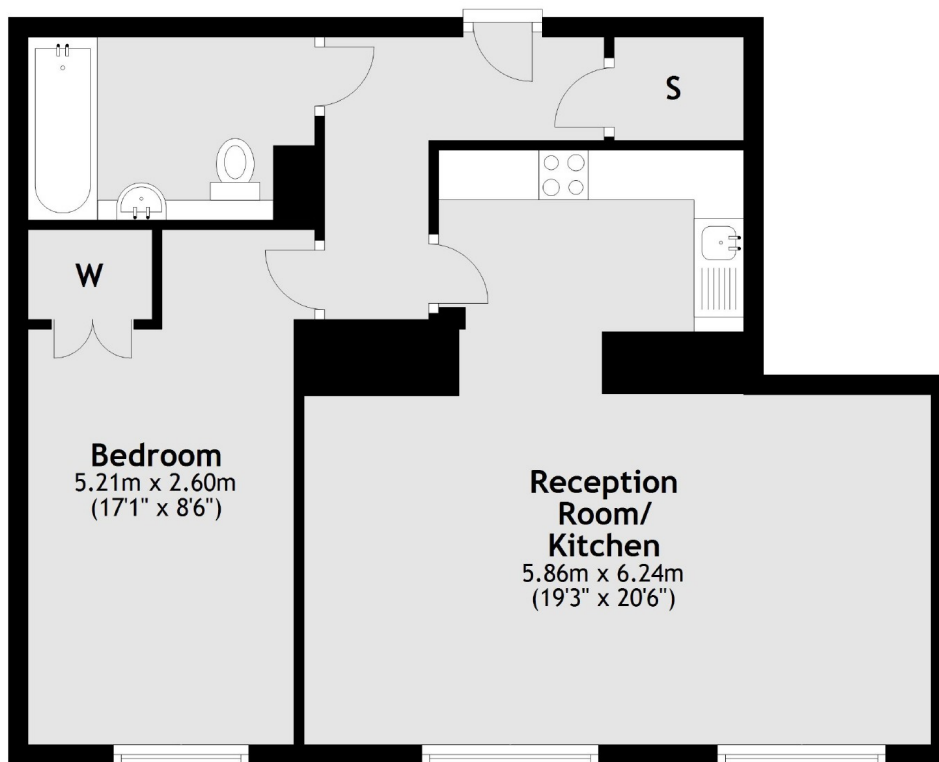
Oxford Street is moments from the vibrant shops, bars, and restaurants of trendy Soho and surrounded by Leicester Square, Piccadilly Circus and Tottenham Court Road Stations.

Features

- Wood Floors
- Double Glazing
- Central Location
- South Facing
- Modern Finish
- Well Sound-proofed

**Oxford Street,
London, W1D**

Third Floor



Total area: approx. 58.0 sq. metres (624.3 sq. feet)