



146 Jockey Way, Andover, SP11 6QA
Asking Price £475,000



146 Jockey Way, Andover,
Asking Price £475,000

PROPERTY DESCRIPTION BY Mr Nick King

Set within the edge of Picket Twenty development, this beautifully presented four-bedroom detached home offers vast space and impressive accommodation extending to approximately 1,500 square feet. The property enjoys an attractive street presence and benefits with a private driveway providing off-street parking. Internally, the welcoming entrance hall leads to a generous sitting room decorated to an exquisite standard. To the back of property you will find a desirable kitchen/dinning room, very appealing to the eye, finished with a Quartz worktop surface, complemented by a utility and downstairs WC. The bright and spacious second family room overlooks the rear landscaped garden finished with Karndean flooring and lots of natural light.

To the first floor you will find three double bedrooms, one with a thoughtfully designed en suite.

There is also a family bathroom with an electric shower serving the remaining bedrooms on this floor. Set across the entire second floor, the master suite includes nearly 300 square feet of luxury not forgetting the additional bathroom. The entire property has been fitted with chrome finishes and completed to an exceptionally high standard. Please enquire now for further details.



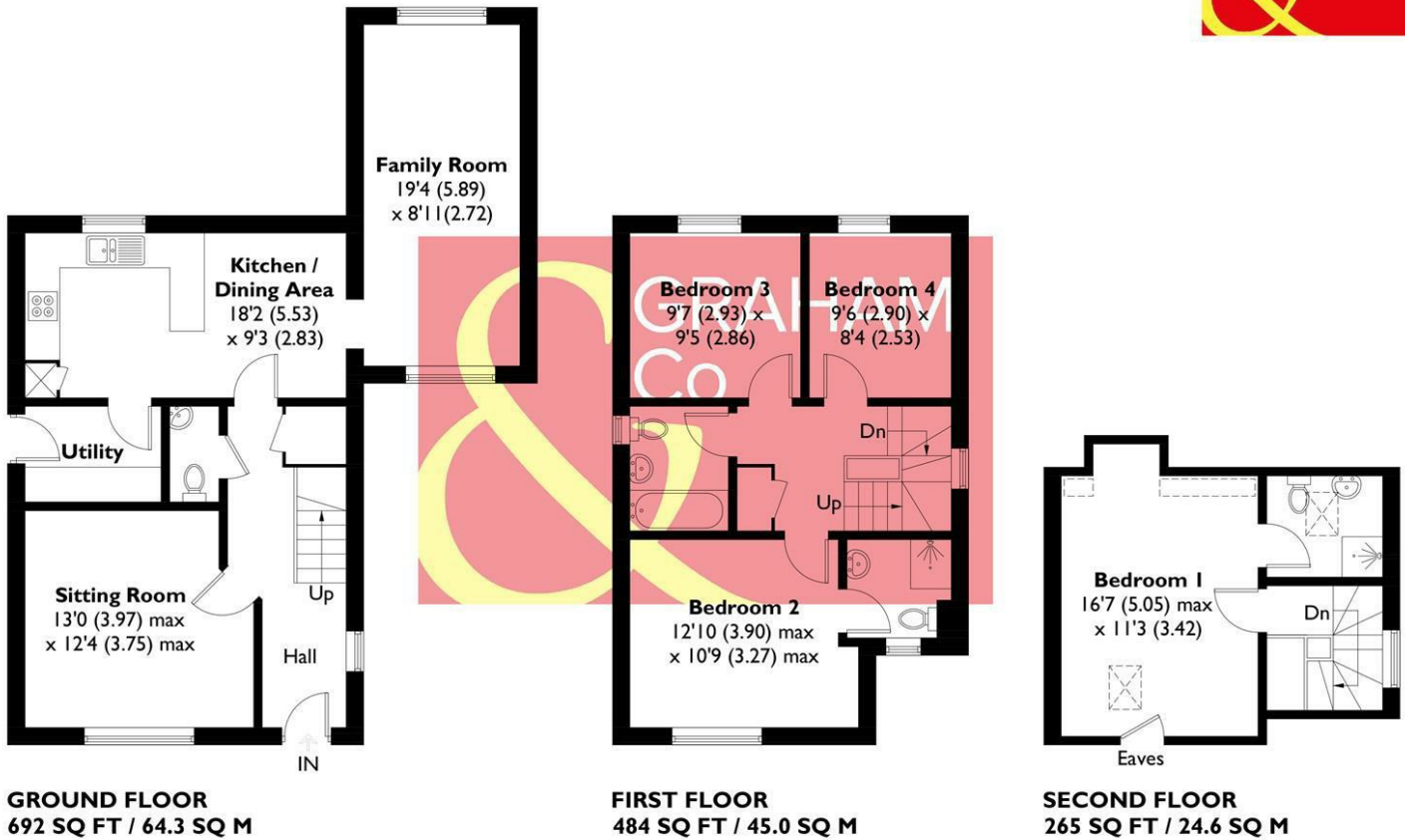


Picket Twenty is just over 2 miles south-east of Andover town centre, where a range of pubs, inns, cafés and restaurants are located. The main shopping area is around the High Street and its adjoining streets. Along with a modern shopping centre, a market is held every Thursday and Saturday; whilst there are several supermarkets, both in and out of the town centre. At the very hub of Picket Twenty, a community centre, day nursery and primary school are being provided, along with shopping facilities for day-to-day needs. Parks with children's play areas are also a feature on this development. Further opportunities for outdoor leisure come with the provision of a magnificent 64-acre urban park, complete with a sports pavilion, football pitches, cricket pitch, tennis court, play area and multi-use games centre - this large open space, so close to home, is bound to be popular with all members of the family. Please note that as with most modern housing developments, this property may have a minimal yearly "estate charge". Please ask for further information.





APPROXIMATE GROSS INTERNAL AREA = 1441 SQ FT / 133.9 SQ M



This plan is for layout guidance only. Not drawn to scale unless stated. Windows and door openings are approximate. Whilst every care is taken in the preparation of this plan, please check all dimensions, shapes and compass bearings before making any decisions reliant upon them. Created by Emzo Marketing (ID1305813)
Produced for Graham & Co

MORTGAGE ADVICE Across The Market Mortgages

An independent Mortgage brokerage offering expert advice from across the whole market. Whether you are a first-time buyer, home mover, remortgaging or buying a Buy-To-Let investment. Tristan can provide expert & reliable advice, in a clear jargon free language. Book a free consultation today.

E - tristan@atmmortgages.com M - 07545320380 www.atmmortgages.com

Energy Efficiency Rating		Current	Potential
Very energy efficient - lower running costs	A		94
	B	84	
	C		
	D		
	E		
	F		
	G		
Not energy efficient - higher running costs			
England & Wales		EU Directive 2002/91/EC	

Tax Band: E



OPEN 7 DAYS

If you are considering selling your home please contact us today for your free no obligation valuation
01264 356500

IMPORTANT: we would like to inform prospective purchasers that these sales particulars have been prepared as a general guide only. A detailed survey has not been carried out, nor the services, appliances and fittings tested. Room sizes should not be relied upon for furnishing purposes and are approximate. If floor plans are included, they are for guidance only and illustration purposes only and may not be to scale. If there are any important matters likely to affect your decision to buy, please contact us before viewing the property.

