



29 Queen Anne House Admiralty Road

, Portsmouth, PO1 3GT

Asking price **£220,000**

****NO FORWARD CHAIN****

Welcome to this delightful two-bedroom apartment, perfectly positioned in a sought-after location enjoying a rich sense of history and an abundance of local charm. This well-presented home is offered for sale in good condition, providing a welcoming and comfortable environment to settle into right away.

Step inside to discover a lovely reception room with a Juliet balcony, ideal for relaxing evenings or entertaining friends. The modern apartment comprises two bathrooms and one stylish kitchen, making for easy living and practical convenience.

The main bedroom impresses with a double bed arrangement, en-suite bathroom, and built-in wardrobes, ensuring ample storage and a private retreat for restful nights. The property enjoys an excellent EPC rating of B, promoting energy efficiency and lower utility bills.

Perfectly situated, you'll enjoy easy access to train, bus, and ferry stations, enabling effortless travel. The renowned Gunwharf Quays, Old Portsmouth, and the Historic Dockyard are all within walking distance, placing vibrant culture, restaurants, and shopping right at your doorstep. Scenic walking routes and historical sites further elevate the appeal of this fantastic flat. Don't miss your chance to make this lovely property your new home—contact us to arrange a viewing today!

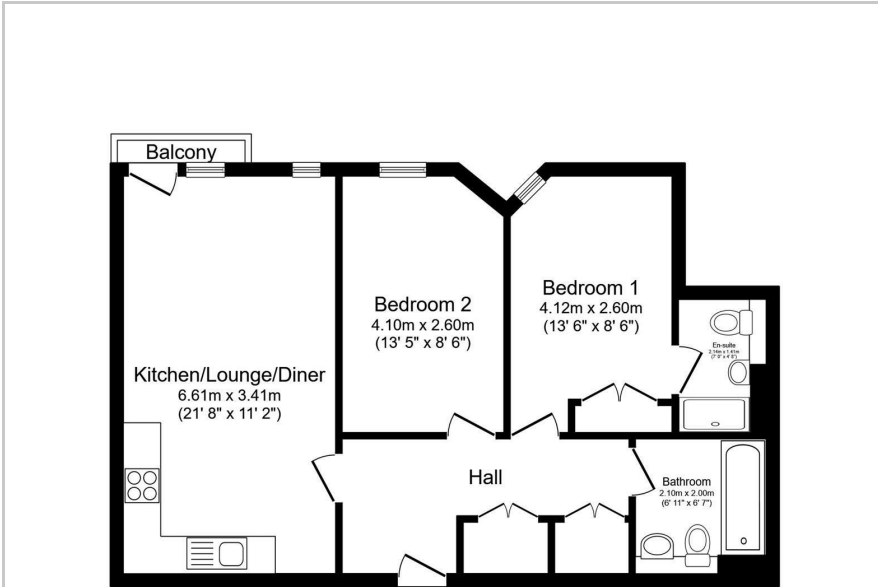
- No forward chain
- Modern & stylish two double bedroom apartment
- Bathroom & en-suite
- Secure building with concierge
- Allocated parking
- Long lease with good freeholder
- Easy reach of train, ferry & bus station
- Walking distance to Gunwharf, Naval Dockyard & city center
- Popular, sought after location
- Good return for investors

Viewing

Please contact our ROK Marsh Office on 02393233267 if you wish to arrange a viewing appointment for this property or require further information.



Floor Plan



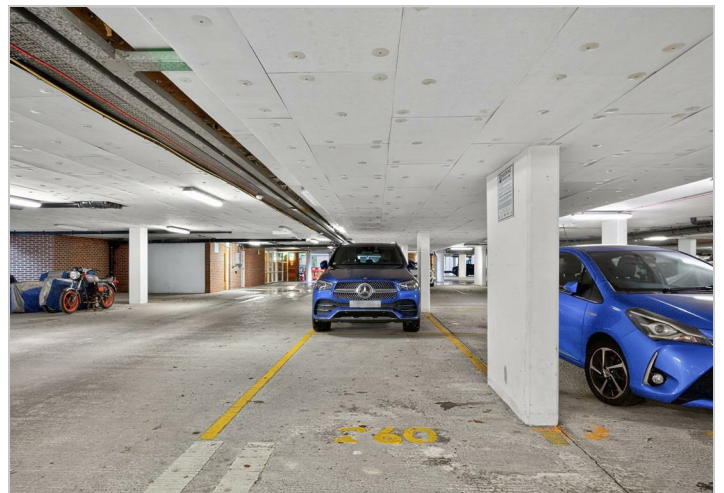
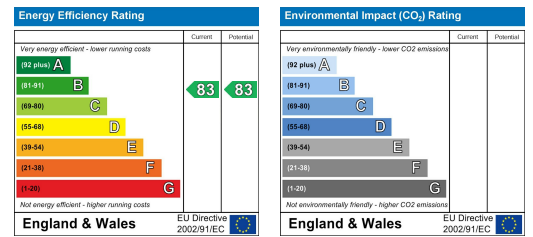
Total floor area 62.4 sq.m. (671 sq.ft.) approx

This floor plan is for illustrative purposes only. It is not drawn to scale. Any measurements, floor areas (including any total floor area), openings and orientations are approximate. No details are guaranteed, they cannot be relied upon for any purpose and do not form any part of any agreement. No liability is taken for any error, omission or misstatement. A party must rely upon its own inspection(s). Powered by www.Propertybox.io

Area Map



Energy Efficiency Graph



These particulars, whilst believed to be accurate are set out as a general outline only for guidance and do not constitute any part of an offer or contract. Intending purchasers should not rely on them as statements of representation of fact, but must satisfy themselves by inspection or otherwise as to their accuracy. No person in this firm's employment has the authority to make or give any representation or warranty in respect of the property.