



KINGS AVENUE, SW4

£2,600 per month

Two Bedroom
Two Bathroom
Lift Access
Gated Allocated Parking
Close to Stations
Energy Rating: C

@marshandparsons
marshandparsons.co.uk

MARSH &
PARSONS



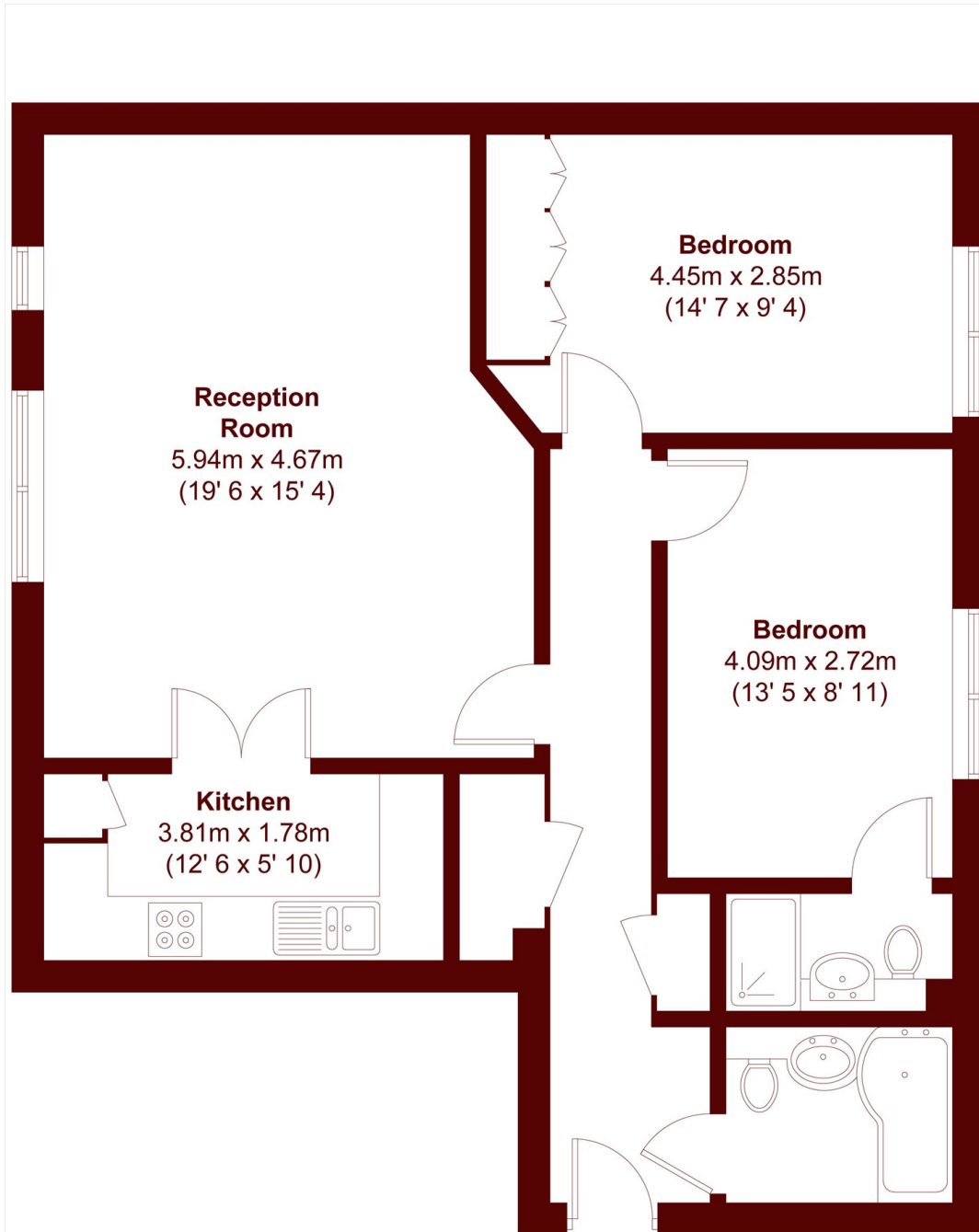
ABOUT THE PROPERTY

This contemporary two double bedroom, two bathroom property sits on the first floor of a popular and secure gated development. The property has a large open plan reception room with modern kitchen, along with a private allocated parking space.

Set within a peaceful and well-maintained development, the property enjoys a quiet setting while being just moments from the vibrant amenities of Brixton and Clapham. The charming Abbeville Village, with its excellent selection of cafés, restaurants and boutique shops, is also within easy walking distance.



STEP INSIDE KINGS AVENUE



First Floor

APPROX. GROSS INTERNAL FLOOR AREA
831 SQFT / 77.2 SQM

Brixton
020 7871 5040

Energy Rating: C We aim to make our particulars both accurate and reliable. However, they are not guaranteed; nor do they form part of an offer or contract. If you require clarification on any points then please contact us, especially if you're traveling some distance to view. Please note that appliances and heating systems have not been tested and therefore no warranties can be given as to their good working order

**MARSH &
PARSONS**