

Property ref: 162024

## Hindmarsh Lofts, Reading, RG1 3AR

£1,300 PCM

**HASLAM'S**  
Lettings



This stylish one bedroom apartment is located in the exclusive Hindmarsh Lofts development which enjoys a prime town centre position within walking distance of the mainline station, riverside shops and restaurants of the Oracle shopping centre.

With attention to detail and a high standard of finish these individual homes have a sense of art-deco styling and a residents lift. Reading Borough Council Tax Band C.

Broadband/Mobile Info: Connections available. For an indication of specific speeds and supply of Broadband and Mobile, we advise applicants go to the Ofcom website Broadband and Mobile Coverage Checker.

**Available 17/09/2026**

\*Fees For Assured Periodic Tenancies: when you rent a property from us you will be required to pay a sum equivalent to one weeks' rent for a holding deposit. Upon successful application, this amount will be off set against your first months' rent. You will also be required to pay a security deposit equivalent to 5 weeks' rent which will be held and protected in line with Deposit legislation. For more information about our fees please visit: [www.haslams.net](http://www.haslams.net)  
Fees for all other tenancies (Non Housing Act Tenancies / Company Lets): when you rent a property from us we will charge you a one-off fee per property. This charge is the equivalent of 15 days of the monthly rental charge (+VAT) with a minimum fee of £450 (inc.VAT) up to a maximum of £650 (inc.VAT). Other fees may apply depending on your circumstances.

- Stylish double bedroom apartment
- Town Centre location; Gas central heating
- Open plan kitchen/living area
- Unfurnished; EPC rating C
- No Parking
- Managed by Haslams

**0118 960 1055**

**[lettings@haslams.net](mailto:lettings@haslams.net) [www.haslams.net](http://www.haslams.net)**

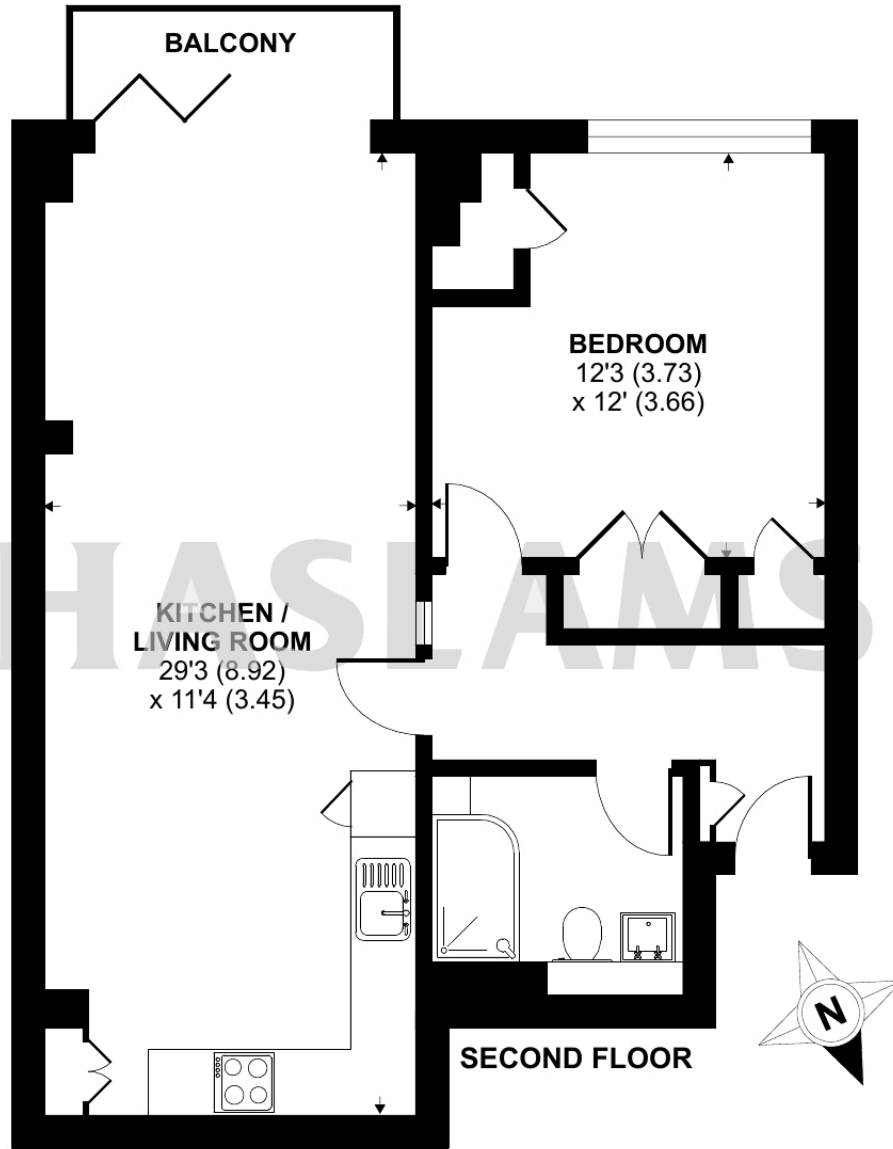
**Haslams Estate Agents Ltd, 159 Friar Street, Reading, Berkshire, RG1 1HE**



# Hindmarsh Lofts, Kings Road, Reading, RG1

Approximate Area = 633 sq ft / 58.8 sq m

For identification only - Not to scale



Floor plan produced in accordance with RICS Property Measurement Standards incorporating International Property Measurement Standards (IPMS2 Residential). © nichecom 2024. Produced for Haslam's. REF: 1173041