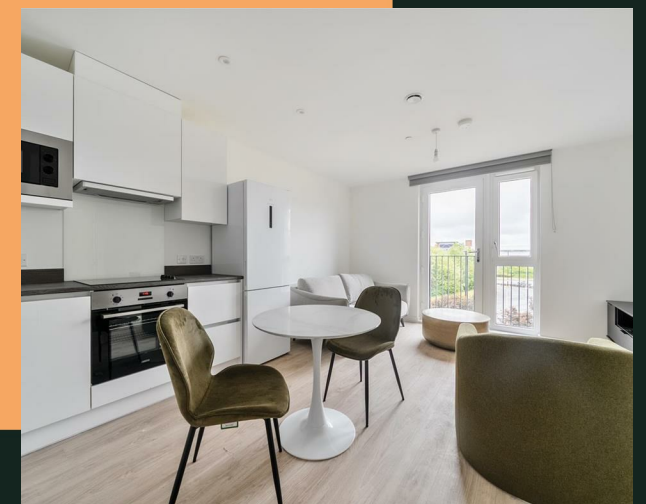
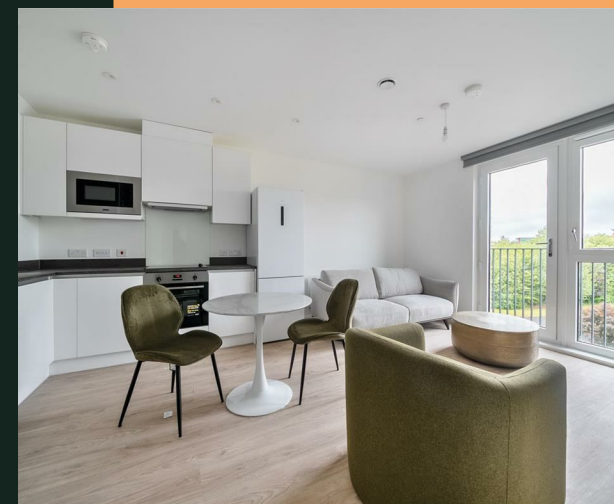



Griffiths Close, B12



PROPERTY ADDRESS
 Apartment 404
 3 Griffiths Close
 Birmingham
 B12 9BD

Energy Efficiency Rating		Current	Potential
<i>Very energy efficient - lower running costs</i>			
(92 plus) A			
(81-91) B		84	84
(69-80) C			
(55-68) D			
(39-54) E			
(21-38) F			
(1-20) G			
<i>Not energy efficient - higher running costs</i>			
England & Wales		EU Directive 2002/91/EC 	

Call Us
01215162222

Email Us
solihull@vision-properties.co.uk

vision

We look at
estate agency
differently.

vision

- Total cost of first month: £2,046.15 (rent & deposit)
- Furnished
- Concierge
- Gym
- Cinema room

The furnished apartment briefly comprises of a bright and airy open plan living, kitchen and dining area with a Juliet balcony, a double bedroom with fitted mirrored wardrobe, and a bathroom. The property benefits from high spec fixtures and fittings throughout.

Belgrave Village is the new vibrant neighbourhood located in the heart of Birmingham with access to local amenities such as Edgbaston stadium, Cannon Hill Park, Moseley Village, Broadway Plaza, Brindley Place, Bullring and Grand Central. These are all easily accessible with the excellent local transport system which includes a vast range of bus services and nearby train stations such as New Street, Snow Hill and Five Ways.

The development itself offers numerous facilities for residents including a concierge service, gym, co-working space and screening room, all set within attractive green surroundings.

Available from 6th August subject to acceptable referencing.

Rent: £950 per calendar month
Holding deposit: £219.23
Deposit: £1,096.15



Your Text Here

