



THE
PARK LANE GROUP



Hawthorn Road, Hastings
£1,095 Per Month

House - Semi-Detached

Date Available: 3rd July 2026
Deposit: £1,263
Council Tax Band: B



■ ****COMING SOON****

■ Fully Tiled Modern Fitted Bathroom

■ Private, Enclosed Rear Garden

■ Gas Central Heating & Double Glazing

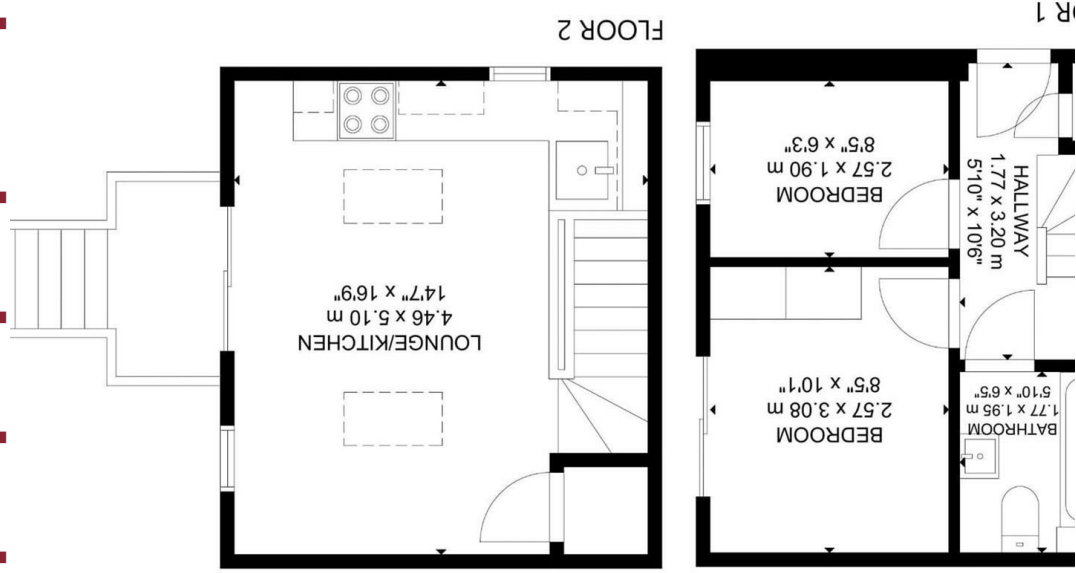
■ Spacious Living Room with French Doors Out Onto the Garden

■ Private Off-Road Parking Space

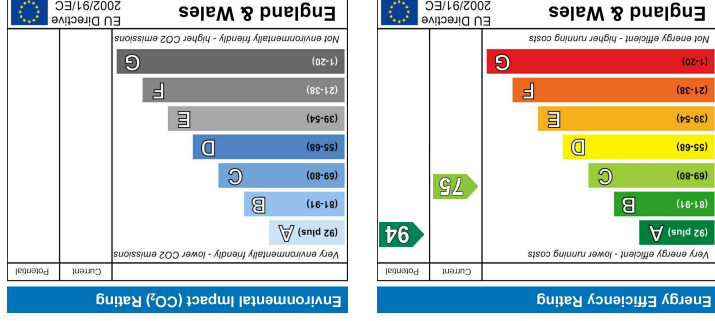
■ Spacious Master Bedroom with Sliding Patio Doors

■ Ideally Situated to Schools, Shops & Local Amenities

■ Contemporary Fitted Kitchen with Integrated Appliances



GROSS INTERNAL AREA
FLOOR 1: 23 m²/245 sq ft, FLOOR 2: 23 m²/245 sq ft
TOTAL: 46 m²/491 sq ft
SIZE AND DIMENSIONS ARE APPROXIMATE. ACTUAL MAY VARY.



IMPORTANT NOTICE – These particulars have been prepared in good faith and they are not intended to constitute part of an offer or contract. We have not performed a structural survey on this property and the services, appliances and specific fittings have not been tested. All photographs, measurements, floor plans and distances referred to are given as a guide and should not be relied upon.