



Commercial Road, E1

£4,200 Per calendar month

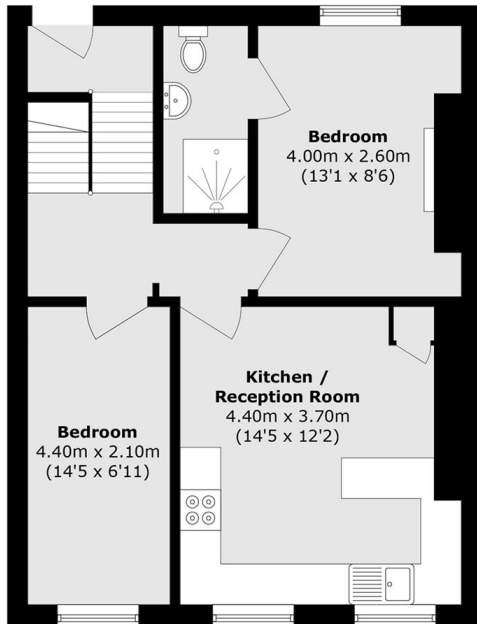
A five bedroom HMO, top floor, split level flat available to let to five friends or a family. This spacious property has recently been repainted and re carpeted, and will make the perfect home for renters looking to live in the heart of East London.

Whitechapel is a vibrant area full of culture. The future residents will enjoy the easy access to Canary Wharf, The City of London, and of course the mix of culture around the famous Brick Lane.

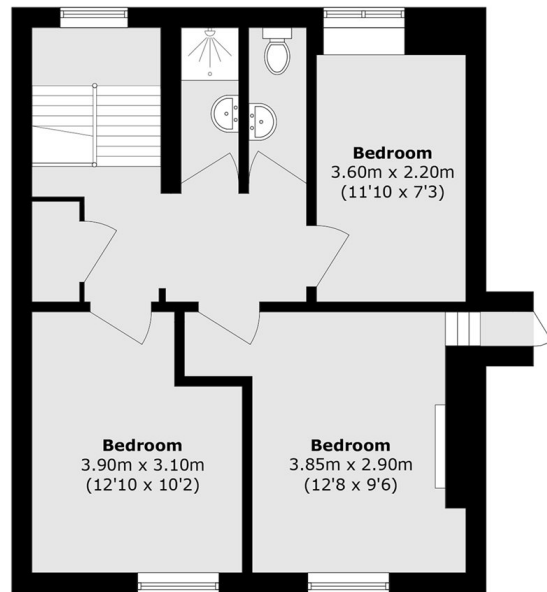
Features

- Five Double Bedrooms
- Two Bathrooms
- Furnished
- Split Level
- Open Plan Kitchen
- New Carpets

Commercial Road, London, E1



Third Floor



Fourth Floor

Total area (approx.): 106.5 sq. m (1146.3 sq. ft)