



WARDO AVENUE, SW6

£1,800,000

This exceptional mid-terraced four bedroom house sits on a sought after residential street and is presented in excellent condition. Arranged over three floors, it offers well-designed space for modern family living. The

South facing garden

Four bedrooms

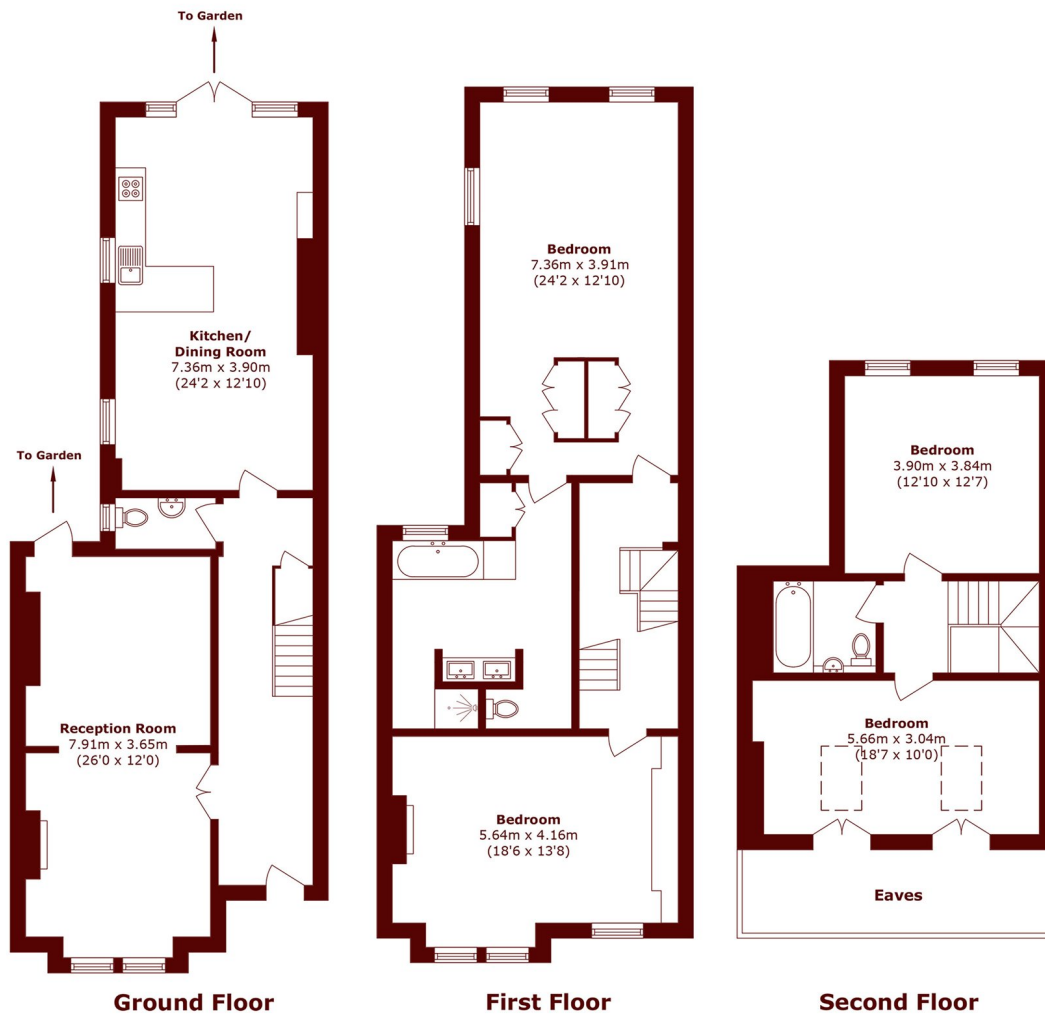
Fantastic primary suite

Double reception room

No chain

Bishops Park

STEP INSIDE WARDO AVENUE



Total area (approx.): 196.4 sq. m (2114.0 sq. ft)
(Excluding Eaves)

Bishops Park
020 7993 9888

Energy Rating: D We aim to make our particulars both accurate and reliable. However, they are not guaranteed; nor do they form part of an offer or contract. If you require clarification on any points then please contact us, especially if you're traveling some distance to view. Please note that appliances and heating systems have not been tested and therefore no warranties can be given as to their good working order

**MARSH &
PARSONS**