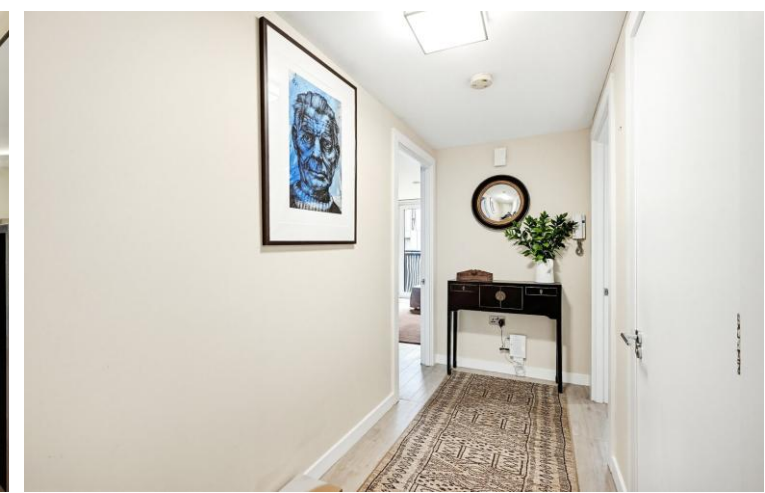




Woods House  
7 Gatliff Road, SW1W

CHESTERTONS





Situated on the third floor of the modern and well-maintained Woods House, this beautifully presented one-bedroom apartment offers approximately 506 sq ft of bright and contemporary living accommodation in the heart of SW1W.

The property comprises a spacious open plan reception and kitchen area, designed to maximise natural light and functionality, alongside a generously sized double bedroom with fitted storage and a stylish modern bathroom. Finished to a high standard throughout, the apartment benefits from clean contemporary interiors, quality fixtures and fittings, and an efficient layout ideal for both owner-occupiers and investors alike.

Woods House is conveniently located within close proximity to the excellent amenities, boutiques, cafés, and transport connections of Belgravia, Victoria, and Sloane Square, providing exceptional access across Central London.

- One double bedroom
- One modern bathroom
- Open-plan reception/kitchen
- Third floor position
- Approximately 506 sq ft
- Modern development

**£4,116.67 pcm**

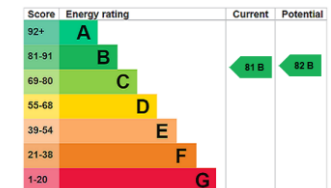
Additional tenant charges apply (fees apply to non-AST tenancies only)

Tenancy Agreement Fee: £300

References per Tenant/Guarantor: £60

Inventory check (approx. £100 – £250 inc. VAT)

[chestertons.co.uk/property-to-rent/applicable-fees](http://chestertons.co.uk/property-to-rent/applicable-fees)



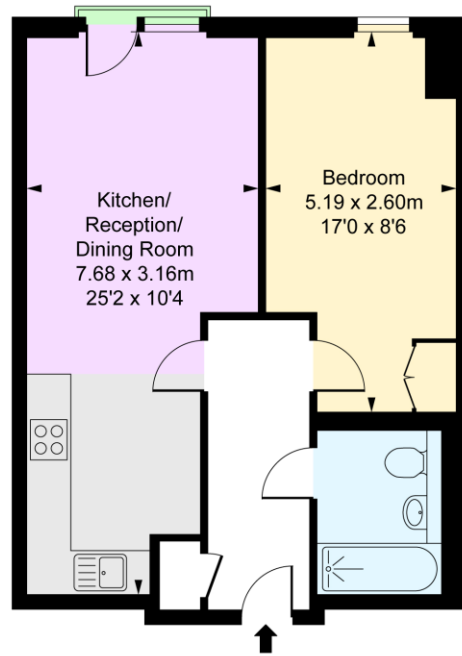
**Minimum Term:** 1 months  
**Deposit Required:** 1 month  
**Local Authority:** Westminster  
**Council Tax Band:** D  
**EPC Rating:** B  
**Furnished**

*Chestertons Knightsbridge & Belgravia Lettings*

31 Lowndes Street  
London  
SW1X 9HX

knightsbridgelettingsusers@chestertons.co.uk  
02072353530  
chestertons.co.uk

Woods House,  
Gatliff Road, SW1W  
Approximate Gross Internal Area  
44.33 sq m / 477 sq ft



Third Floor

This plan is not to scale. It is for guidance and not for valuation purposes.  
All measurements and areas are approximate only, and have been prepared in accordance with the current edition of the RICS Code of Measuring Practice.  
© Fulham Performance

Chesterton UK Services Limited trading as Chestertons for themselves and for the vendor of this property whose agents they are, give notice that (i) these particulars do not constitute any part of an offer or contract, (ii) all statements contained within these particulars are made without responsibility on the part of Chestertons or the vendor, (iii) whilst made in good faith, none of the statements contained within these particulars are to be relied upon as a statement or representation of fact, (iv) any intending purchasers must satisfy themselves by inspection or otherwise as to the correctness of each of the statements contained within these particulars, (v) the vendor does not make or give either Chestertons or any person in their employment any authority to make or give representation or warranty whatsoever in relation to this property. Wide angle lenses may be used. ©Copyright Chestertons | Chesterton Global Ltd | Registered Office 5th Floor, The Lantern, 75 Hampstead Road, London, NW1 2PL Registered Company Number 05334580.



This paper is  
100% recyclable