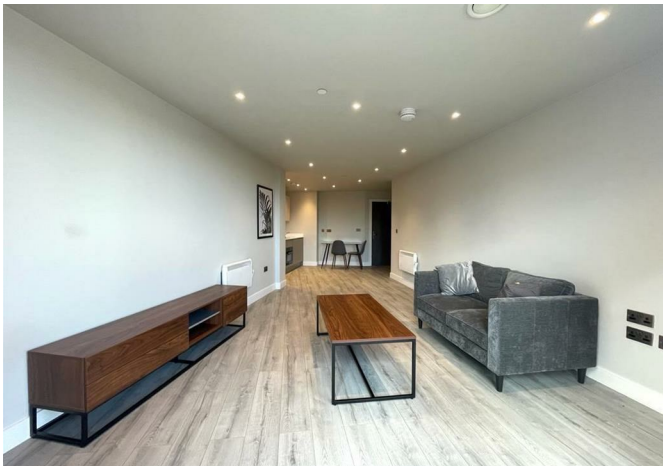


BRICK
MANAGEMENT + LETTINGS



Flat 32 Steel House The Metalworks, Petersfield Avenue, Slough, SL2 5AE

£198,500



Flat 32 Steel House The Metalworks, Petersfield Avenue, Slough, SL2 5AE

£198,500

FANTASTIC INVESTMENT OPPORTUNITY!!...

New to the market, this impressive, spacious one bedroom apartment is located in the popular Steel House / Metalworks development, close to Slough centre.

The property itself benefits from a large open plan living area with wood effect flooring and door to a balcony, stylish kitchen area with appliances, large double bedroom with fitted mirrored wardrobe, luxury bathroom suite with bath and shower, secure entry-phone access, contemporary design throughout and an allocated underground secure parking space.

Steel House is just a 5 minute walk from the Slough station, on the Elizabeth line, offering 15 minute access into Paddington. The M4 is just a 5 minute drive away.

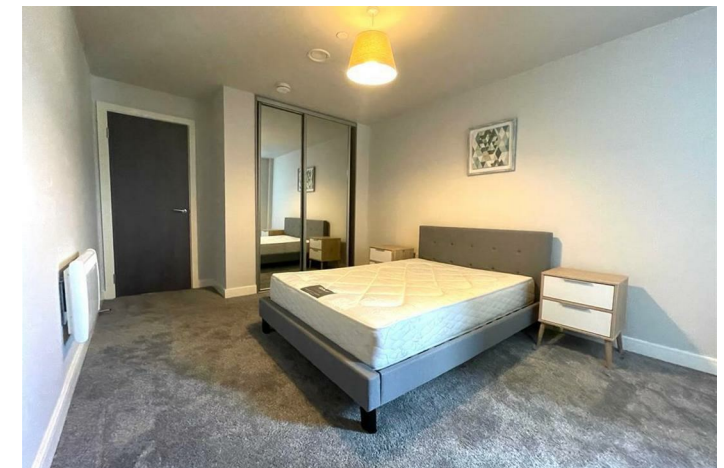
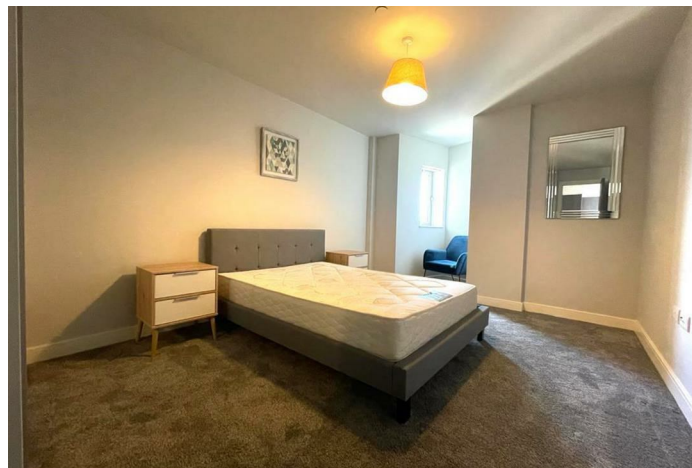
The apartment is for sale with long term tenant in situ, so provides an instant rental income upon completion of purchase.

150 year lease with 146 years remaining.

Description



Situation



null

Council Tax Band: B

Available:

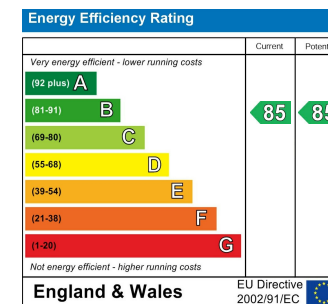
Floor Plans



Area Map



Energy Performance Graph



These particulars, whilst believed to be accurate are set out as a general outline only for guidance and do not constitute any part of an offer or contract. Intending purchasers should not rely on them as statements of representation of fact, but must satisfy themselves by inspection or otherwise as to their accuracy. No person in this firm's employment has the authority to make or give any representation or warranty in respect of the property.