



Eastway, E9

£700,000

Dexters



Eastway, E9

A three bedroom, two bathroom Church conversion next to Hackney Wick and Victoria Park. This duplex apartment measures over 912 sq ft and cleverly blends the old and new; vaulted ceilings, Church style windows, engineered wood flooring & modern appliances. It benefits from secure entry, a communal courtyard, bike storage, no onward chain & on-site café.

Developed in 2013 by architects Matthew Lloyd, this Grade II Listed building is a RIBA award-winning conversion. Entering the flat is a spacious open plan kitchen and living area with room to dine and is enhanced by its vaulted ceilings and huge window. The modern kitchen with white gloss cabinets comes with built in appliances. There is a modern bathroom and double bedroom on this floor.

Upstairs are two further double bedrooms with vaulted ceilings & Velux windows and family bathroom.

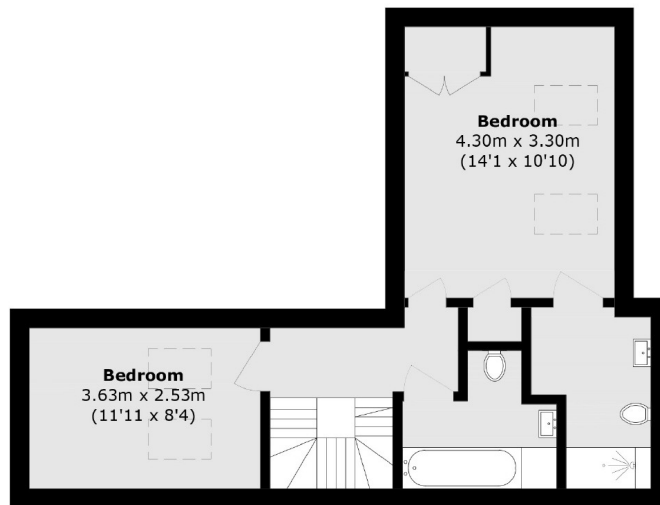
Mission Apartments is located in and around the St Mary Eton church buildings. The property is 500ft from Victoria Parks Molesworth Gate offering many opportunities for outdoor recreation including football & cricket as well as its weekend market. Victoria Park Village and Hackney Wick are both under one mile away with many independent cafes, bars and restaurants. Homerton Overground is half a mile away, only one stop into the transport hub, Stratford.

Features

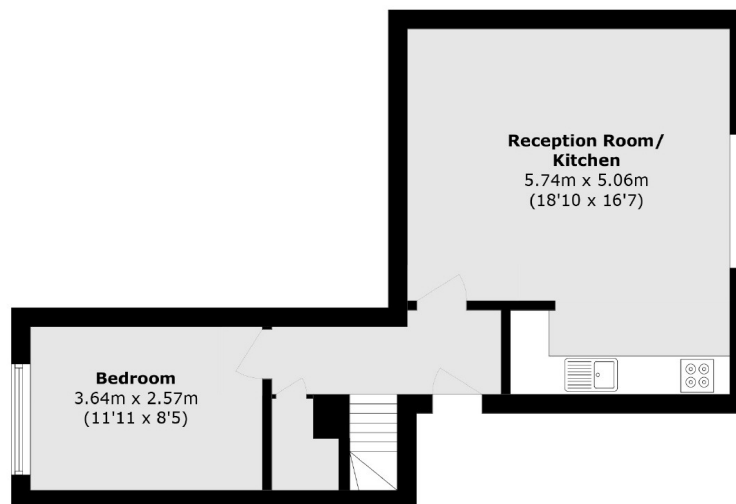
- Church Conversion
- Three Double Bedrooms
- Two Bathrooms
- Split Level
- Grade II Listed
- Victoria Park



Eastway, London, E9



Second Floor



First Floor

Total area (approx.): 84.4 sq. m (912.7 sq. ft)