



28 Foxleys, Carpenders Park  
£725,000





## 28 Foxleys

Carpenders Park, Watford

**4 BEDROOM, 2 BATHROOM LINK-DETACHED HOUSE OFFERING THE IDEAL HOME FOR FAMILIES LOOKING TO UP-SIZE. OFFERED WITH NO UPPER CHAIN!**

Fairfield estates are delighted to offer for sale this substantial property, situated in this sought after residential road, offering easy access to local J.M.I Schooling, local shopping and both Bus & Train services allowing access to Watford (10 minutes by train & London Euston 42 minutes by train).

Council Tax band: F

Tenure: Freehold

EPC Energy Efficiency Rating: D

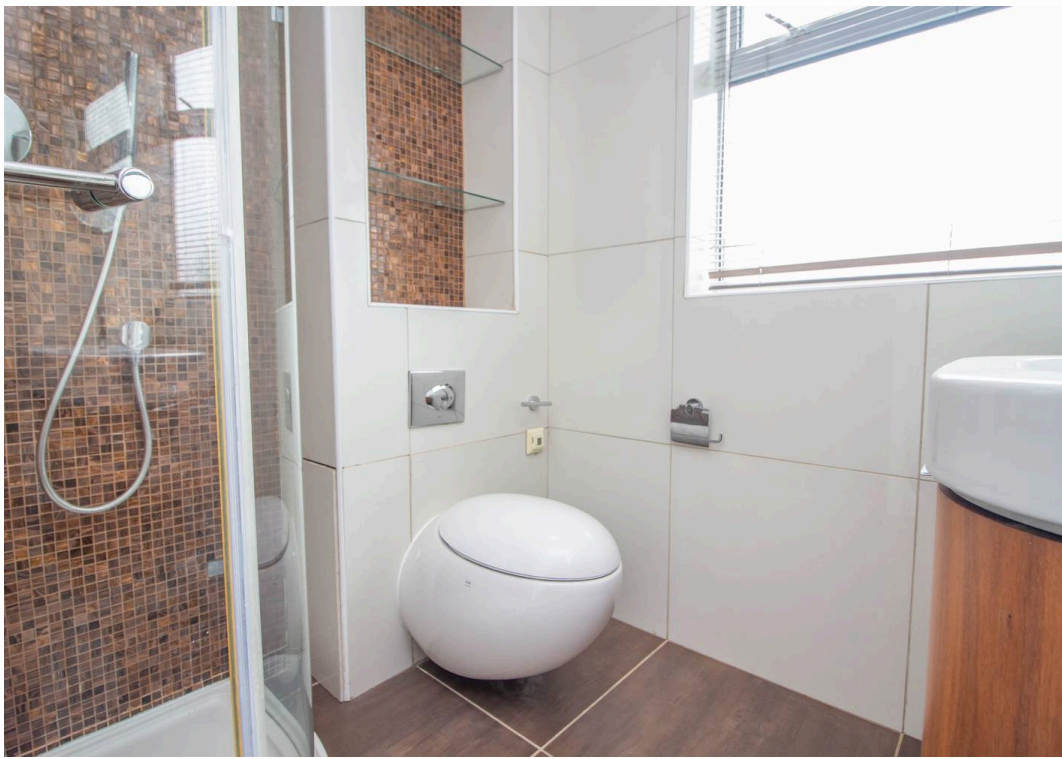
EPC Environmental Impact Rating: D

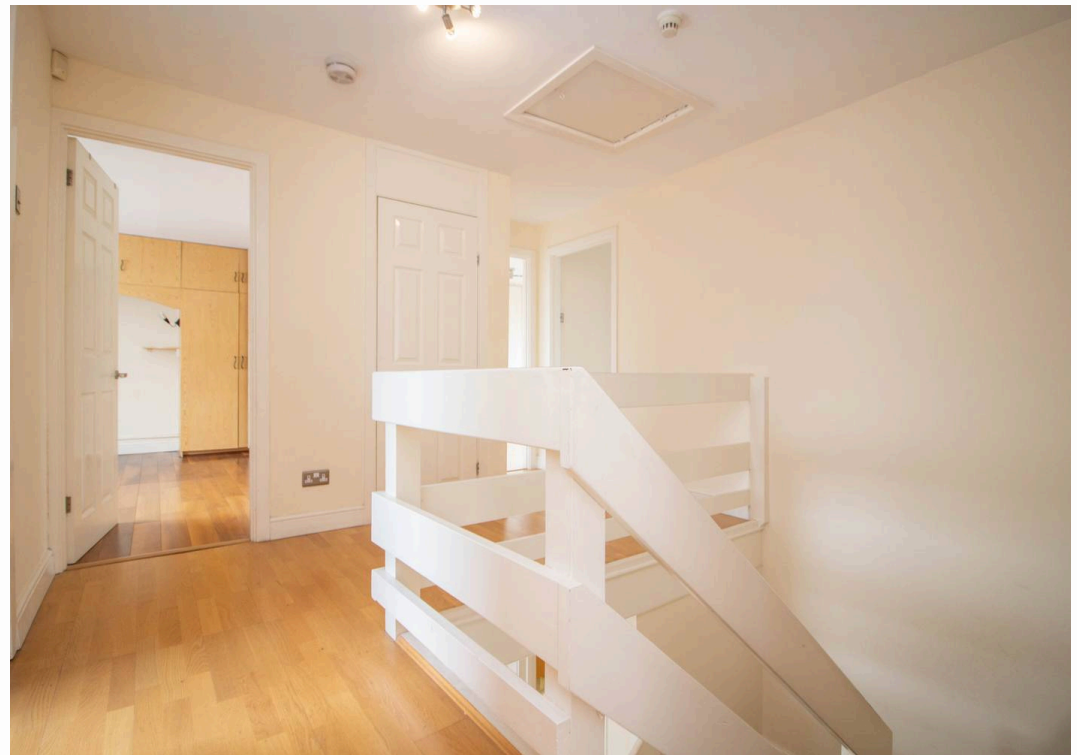


- 26'8 LOUNGE
- 24' DINING ROOM
- MODERN KITCHEN
- MODERN SHOWER/CLOAKROOM
- 17'2 STUDY/OFFICE
- FITTED WARDROBES
- GAS CENTRAL HEATING
- GARAGE & HOME GYM AREA



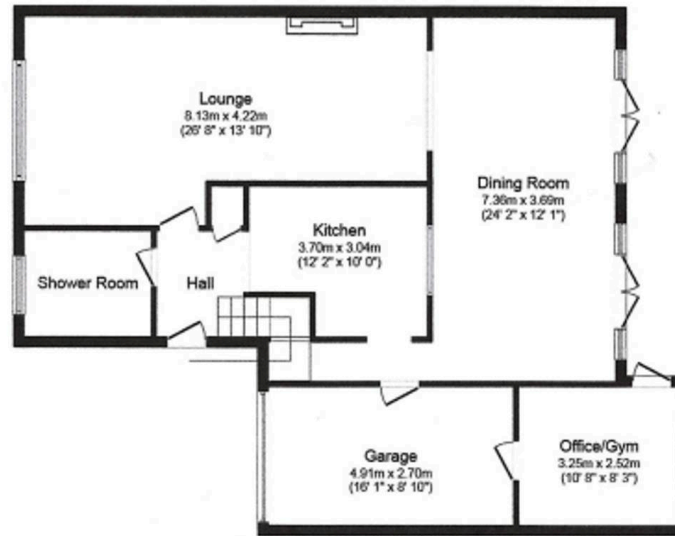






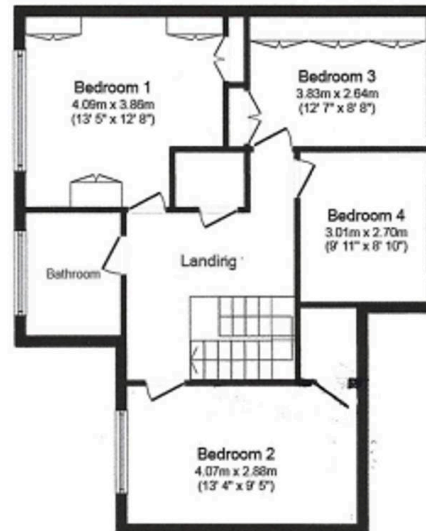






### Ground Floor

Floor area 107.0 sq. m. (1,152 sq. ft.) approx



### First Floor

Floor area 69.0 sq. m. (743 sq. ft.) approx

Total floor area 176.0 sq. m. (1,894 sq. ft.) approx

This plan is for illustration purposes only and may not be representative of the property.  
Plan created for Slades Estate Agents.

