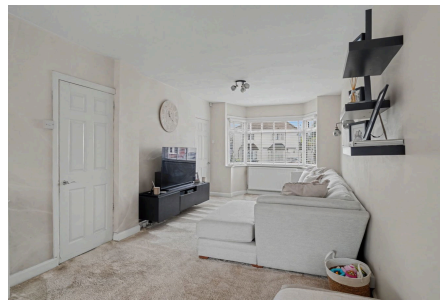
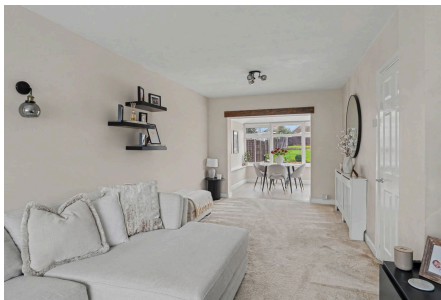


## Blythsford Road, Birmingham, B28 0UP

Offers In Region Of £300,000

🛏 2 🚿 1 🚗 2

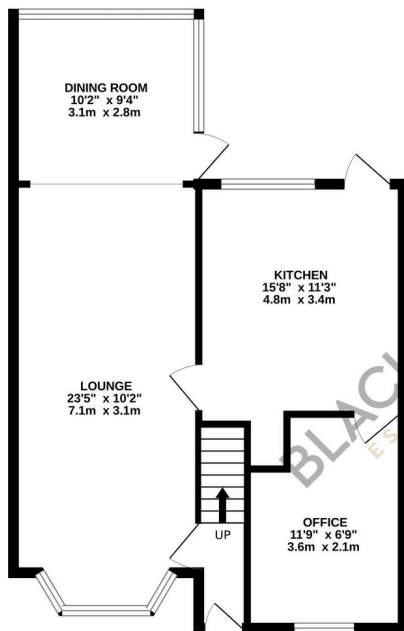


Stylish Extended Two Double Bedroom Home, Modern Throughout, Office Space, Prime B28 Location

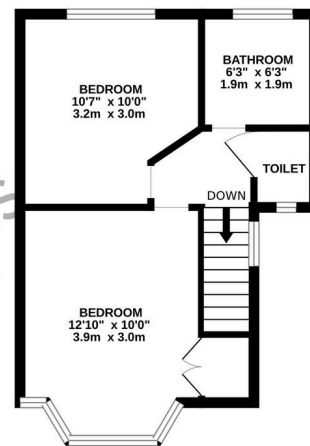
## Key Features

- Extended and modernised throughout
- Spacious and welcoming lounge
- Contemporary kitchen within side extension
- Bright rear dining area filled with natural light
- Front office ideal for home working
- Two excellent sized double bedrooms
- Bathroom with separate upstairs toilet
- Well-balanced and versatile layout
- Popular and well-connected B28 location
- Ideal for first-time buyers or professionals

GROUND FLOOR  
600 sq.ft. (55.8 sq.m.) approx.



1ST FLOOR  
323 sq.ft. (30.0 sq.m.) approx.



TOTAL FLOOR AREA: 923 sq.ft. (85.8 sq.m.) approx.

Whilst every attempt has been made to ensure the accuracy of the floorplan contained here, measurements of doors, windows, rooms and any other items are approximate and no responsibility is taken for any error, omission or mis-statement. This plan is for illustrative purposes only and should be used as such by any prospective purchaser. The services, systems and appliances shown have not been tested and no guarantee as to their operability or efficiency can be given.

Made with Metropix ©2028