

for sale

£425,000



Galmington Road Taunton TA1 5DW

This well-presented **FOUR BEDROOM SEMI-DETACHED FAMILY HOME** is situated within the popular **GALMINGTON AREA**, close to **MUSGROVE PARK HOSPITAL** and **TAUNTON TOWN CENTRE**, and within catchment for **OUTSTANDING SCHOOLS**. Viewing is highly recommended!



Galmington Road Taunton TA1 5DW

Front Door

leading to...

Entrance Hall

A spacious and welcoming entrance hall with a radiator, stairs rising to the first floor and doors leading into...

Kitchen

A spacious and well-appointed kitchen fitted with a range of wall and base units, complemented by solid surface worktops and ample cupboard space. The kitchen benefits from an integrated dishwasher, double oven and extractor fan, with the boiler also located here. There is a radiator, a window overlooking the rear

garden and a door providing access through to the utility room.

Utility Room

A practical utility room offering additional worktop and cupboard space, with room for laundry appliances and a radiator. There is also a window and a door providing access through to the lean-to storage area.

Lounge

A spacious lounge/dining room enjoying a window to the front aspect and French doors opening out to the rear garden, allowing plenty of natural light throughout. The room is well presented with laminate flooring, two radiators and an electric feature fireplace, creating a comfortable and versatile living space.



Downstairs W.C.

A useful downstairs W.C. fitted with a low-level toilet, wash hand basin, radiator and frosted window.

First Floor Landing

First floor landing with access to the loft, which is boarded and benefits from lighting. Doors leading into...

Bedroom One

A good-sized double bedroom benefiting from fitted wardrobes with mirrored sliding doors, a radiator and a window facing the front aspect, allowing plenty of natural light. The room is well presented with carpeted flooring and offers ample space for additional bedroom furniture.

Bedroom Two

A further good-sized double bedroom benefiting from fitted wardrobes with mirrored sliding doors, a radiator and a large window allowing plenty of natural light. The room is well presented with carpeted flooring and offers ample space for bedroom furniture.

Bedroom Three

A well-presented third bedroom benefiting from fitted wardrobes with mirrored sliding doors, a radiator and a window allowing plenty of natural light.

Bedroom Four

Another well-presented bedroom benefiting from a built-in wardrobe, radiator and window allowing natural light.

Shower Room

A well-presented shower room fitted with a walk-in shower, low-level toilet, wash hand basin and heated towel rail. The room also benefits from partially tiled walls and a frosted window allowing natural light.

Outside

Lean-To Storage Area

A useful lean-to storage area providing excellent additional storage space, with doors giving access to both the front and rear of the property.

Rear Garden

A generous and private south-facing rear garden, mainly laid to lawn with a patio seating area and decorative gravel borders. The garden is fully enclosed and offers an excellent space for outdoor entertaining, further benefiting from a substantial shed with power and lighting, as well as an outside tap.

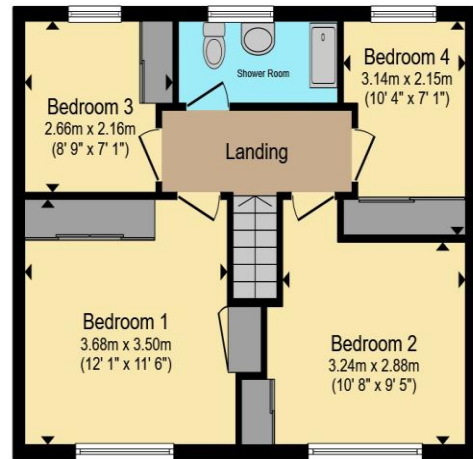
Parking

To the front of the property is a generous driveway providing ample off-road parking for multiple vehicles, with a low-maintenance gravelled finish and paved sections.





Ground Floor



First Floor

Total floor area 115.7 m² (1,245 sq.ft.) approx

This floor plan is for illustrative purposes only. It is not drawn to scale. Any measurements, floor areas (including any total floor area), openings and orientation are approximate. No details are guaranteed, they cannot be relied upon for any purpose and they do not form part of any agreement. No liability is taken for any error, omission or misstatement. A party must rely upon its own inspection(s). Powered by www.propertybox.io



To view this property please contact Connells on

T 01823 334 433
E taunton@connells.co.uk

53 High Street
 TAUNTON TA1 3PR

Property Ref: TTN313708 - 0002

Tenure:Freehold EPC Rating: C

Council Tax Band: A

view this property online
connells.co.uk/Property/TTN313708



1. MONEY LAUNDERING REGULATIONS Intending purchasers will be asked to produce identification documentation at a later stage and we would ask for your co-operation in order that there will be no delay in agreeing the sale. 2. These particulars do not constitute part or all of an offer or contract. 3. The measurements indicated are supplied for guidance only and as such must be considered incorrect. Potential buyers are advised to recheck measurements before committing to any expense. 4. We have not tested any apparatus, equipment, fixtures, fittings or services and it is in the buyers interest to check the working condition of any appliances.

Connells Residential is registered in England and Wales under company number 1489613, Registered Office is Cumbria House, 16-20 Hockliffe Street, Leighton Buzzard, Bedfordshire, LU7 1GN. VAT Registration Number is 500 2481 05.

see all our properties at www.connells.co.uk | www.rightmove.co.uk | www.zoopla.co.uk