



## Myrtle Drive, Newport

Guide Price £230,000 - £240,000

- Guide Price: £230,000 - £240,000
- Two Bedrooms
- Modern Bathroom and Kitchen with Smart Features
- Triple Glazed Windows
- Enclosed Rear Garden
- Double Driveway
- Close to Shops, Schools and Leisure Facilities



**Pinkmove**

01633 746088  
team@pinkmove.co.uk



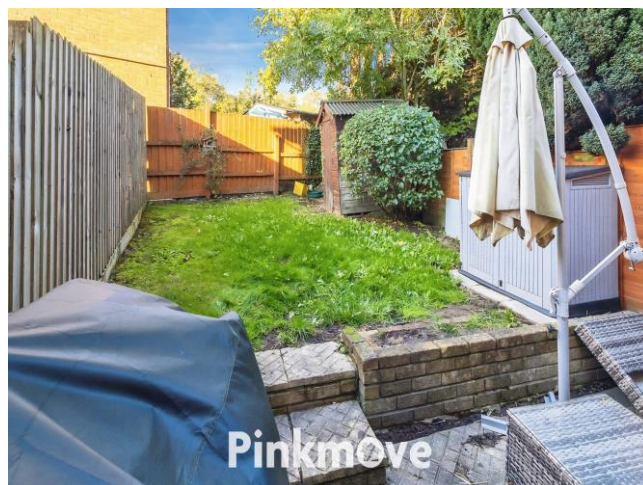
## About the property

Located on Myrtle Drive in the residential area of Newport, this well-presented two-bedroom mid-terrace home offers modern living in a convenient setting.

Entering through the porch, you're welcomed into a spacious living room. To the rear, a high-spec kitchen fitted with a boiling water tap and waste disposal system provides a practical space for cooking and entertaining, with direct access to a private, enclosed garden — ideal for relaxing or hosting guests.

Upstairs, the property features two generously sized double bedrooms and a contemporary family bathroom. To the front, a double driveway offers ample off-road parking. The home benefits from triple-glazed windows for improved insulation and noise reduction, and a smart thermostat for efficient climate control. Myrtle Drive is situated within easy reach of local amenities, schools, and transport links.

Nearby schools such as Bassaleg School and St Joseph's RC High School are well-regarded, and public transport is readily available via Newport Bus services, offering direct routes into the city centre and surrounding areas. The M4 is also easily accessible for commuters.





## Accommodation

### Porch

3' x 4' ( 0.91m x 1.22m )

### Living Room

15' 4" x 12' 8" ( 4.67m x 3.86m )

### Kitchen

9' 1" x 12' 8" ( 2.77m x 3.86m )

### Bedroom 1

9' 2" x 12' 8" ( 2.79m x 3.86m )

### Bedroom 2

7' 3" x 12' 8" ( 2.21m x 3.86m )

### Bathroom

4' 5" x 7' 11" ( 1.35m x 2.41m )

01633 746088

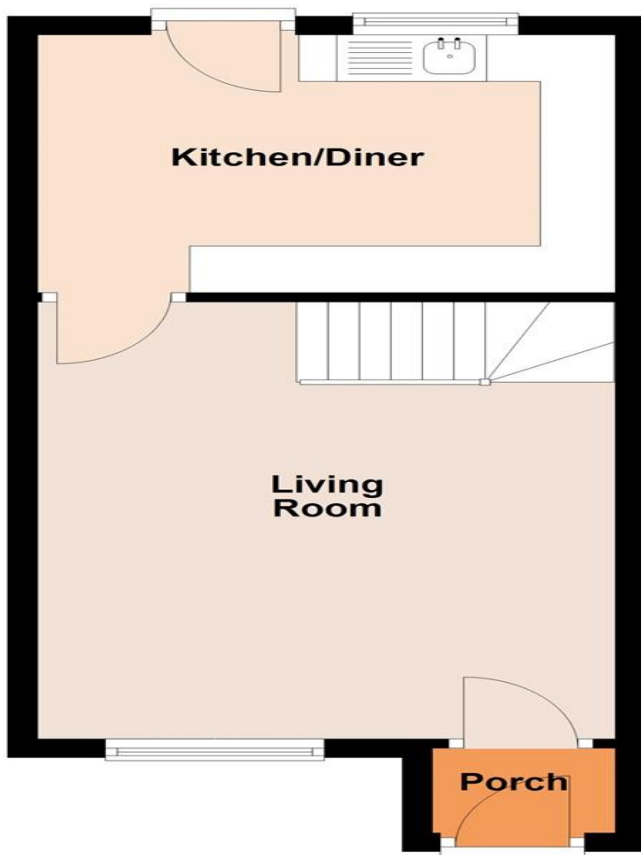
team@pinkmove.co.uk

**Pinkmove**

## Floorplan

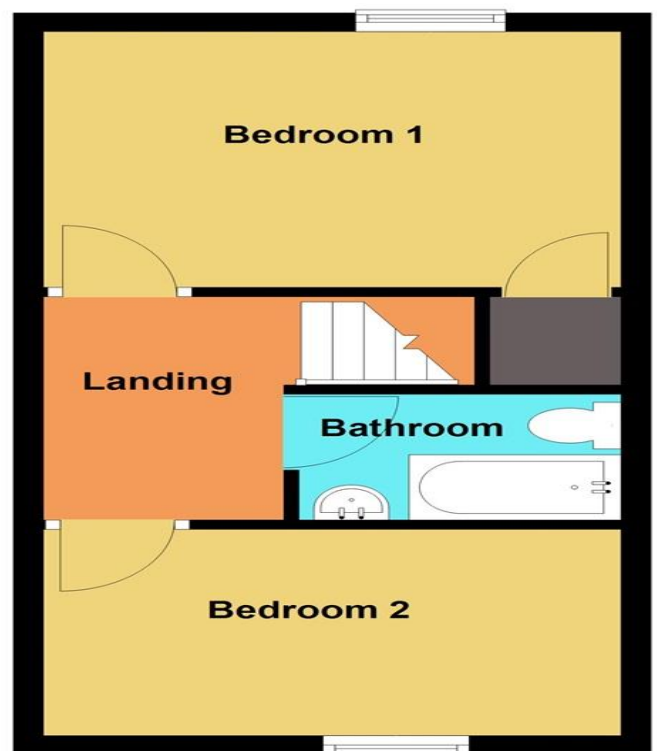
### Ground Floor

Approx. 30.3 sq. metres (326.2 sq. feet)



### First Floor

Approx. 29.1 sq. metres (313.0 sq. feet)



Total area: approx. 59.4 sq. metres (639.2 sq. feet)

**32 Myrtle Drive**

## Important Information

Note while we endeavour to make our sales details accurate and reliable, if there is any point which is of particular interest to you, please contact the office and we will be pleased to confirm the position for you. We have not personally tested any apparatus, equipment, fixtures, fittings or services and cannot verify they are in working order or fit for their purposes. Nothing in these particulars is intended to indicate that carpets or curtains, furnishings or fittings, electrical goods (whether wired or not). Gas fires or light fittings or any other fixtures not expressly included form part of the property offered for sale. This computer generated Floorplan, if applicable, is intended as a general guide to the layout and design of the property. It is not to scale and should not be relied upon for dimensions. Tenure: We cannot confirm the tenure of the property as we have not had access to the legal documents. The buyer is advised to obtain verification from their solicitor or surveyor.

Peter Alan Limited is registered in England and Wales under company number 2073153, Registered Office is Cumbria House, 16-20 Hockliffe Street, Leighton Buzzard, Bedfordshire, LU7 1GN. VAT Registration Number is 500 2481 05. For activities relating to regulated mortgages and non-investment insurance contracts, Peter Alan Limited is an appointed representative of Connells Limited which is authorised and regulated by the Financial Conduct Authority. Connells Limited's Financial Services Register number is 302221. Most buy-to-let

