



Sevenfields, Highworth, SN6 7NQ

£225,000  
(Subject to Contract)

*Hanley's*

## Sevenfields Highworth SN6 7NQ

A well presented two bedroom terraced house situated in a popular location with open aspect to the front. The well planned accommodation comprises: living room, kitchen/dining room with built in oven, hob and extractor fan over and door to the rear garden. To the first floor: landing with access to the loft space and airing cupboard housing the gas fired boiler, two good size bedrooms; one with fitted double wardrobe and bathroom with bath and shower over. The property benefits from gas radiator central heating, double glazing and new fitted carpets throughout. Outside to the front is a gravelled garden with block paved pathway to the house and to the rear is a private and enclosed low maintenance garden with patio area, shed complete with power and gated access to the rear which leads to a private parking area and single garage with new roof and side wall edging which was replaced in 2020. The property is offered for sale with **NO ONWARD CHAIN**.



**1 Bathroom**



**2 Bedrooms**



**1 Reception**

**EPC: C 72**

**Council Tax Band: B**

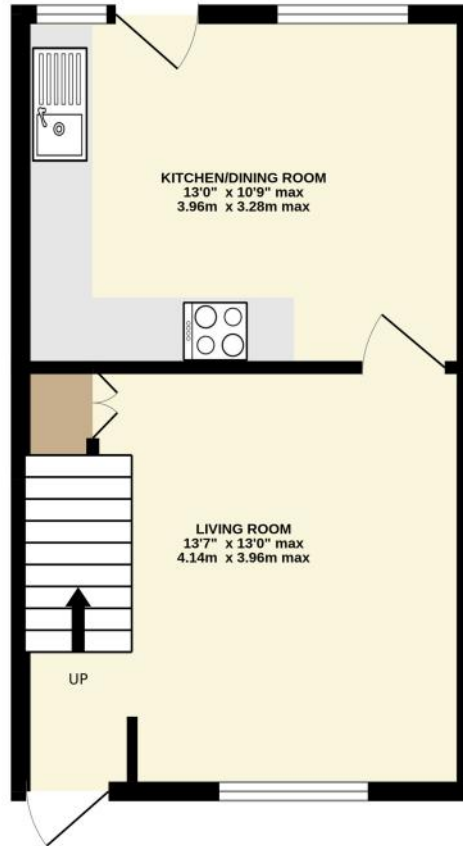
**Tenure: Freehold**



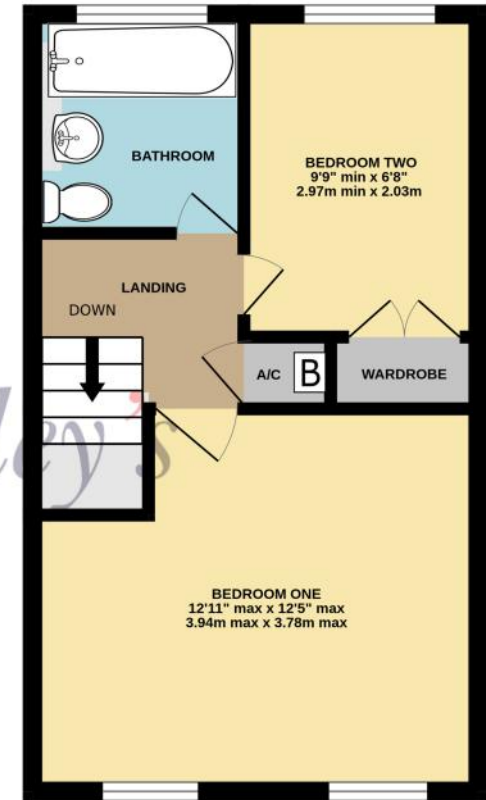
**DISCLAIMER.** These particulars, whilst believed to be accurate are set out as a general outline for guidance and do not constitute any part of an offer or contract. Intending purchasers should not rely on them as statements or representation of fact, but must satisfy themselves by inspection or otherwise as to their accuracy. No person in this firm's employment has the authority to make or give any representation or warranty in respect of the property. Floor plan measurements and distances are approximate only. We have not carried out a detailed survey nor tested the services, appliances or specific fittings. Your home is at risk if you do not keep up repayments on a mortgage or other loan secured on it.



GROUND FLOOR  
317 sq.ft. (29.4 sq.m.) approx.



1ST FLOOR  
317 sq.ft. (29.5 sq.m.) approx.



TOTAL FLOOR AREA: 634 sq.ft. (58.9 sq.m.) approx.

Whilst every attempt has been made to ensure the accuracy of the floorplan contained here, measurements of doors, windows, rooms and any other items are approximate and no responsibility is taken for any error, omission or mis-statement. This plan is for illustrative purposes only and should be used as such by any prospective purchaser. The services, systems and appliances shown have not been tested and no guarantee as to their operability or efficiency can be given.

Made with Metropix ©2026

