



2 Beehive Close, Cholsey, Oxon, OX10 9BF

£1,850 PCM - 10th July 2026

- Four bedroom house located in the centre of this popular village
- Four double bedrooms
- EPC Rating C
- Fully fitted kitchen
- Single garage and parking space
- Council tax Band D
- Sitting room/dining room overlooking rear garden
- Gas central heating
- Ultrafast broadband

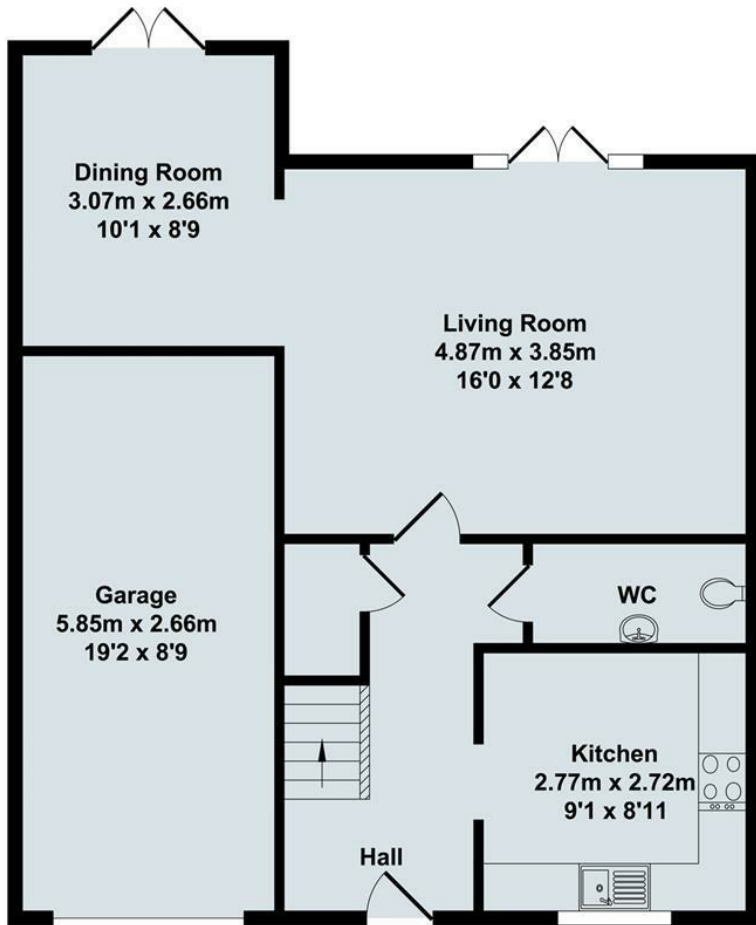
2 Beehive Close, Cholsey OX10 9BF

Four bedroom house located in the centre of this popular village, within walking distance of the shops and station. Comprising of fully fitted kitchen with gas hob, electric oven, washing machine, dishwasher. Sitting room/dining room overlooking rear garden. 4 double bedrooms, ensuite shower to bedroom 1. Family bathroom with shower over bath. Single garage and parking space. Gas central heating.

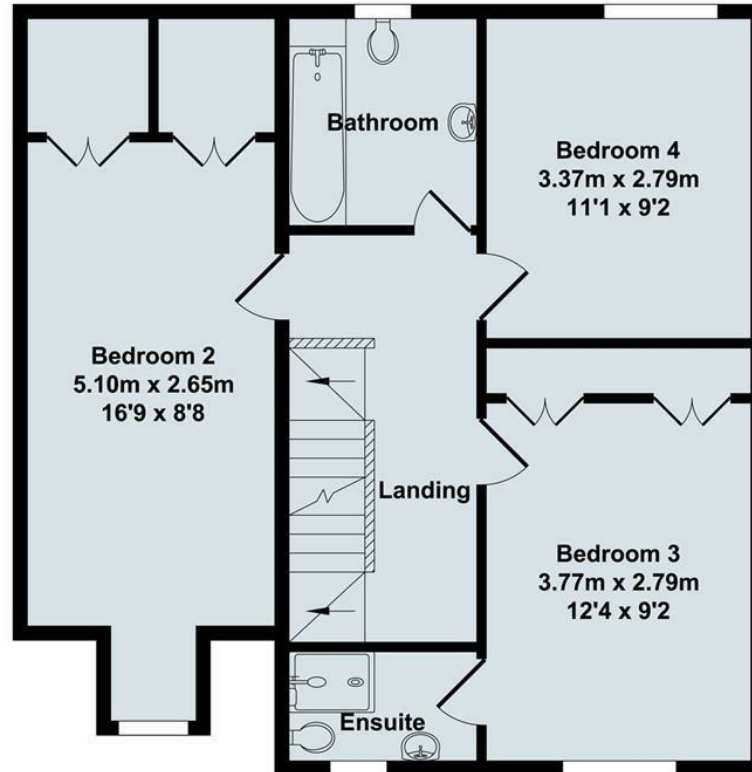


Council Tax Band: D

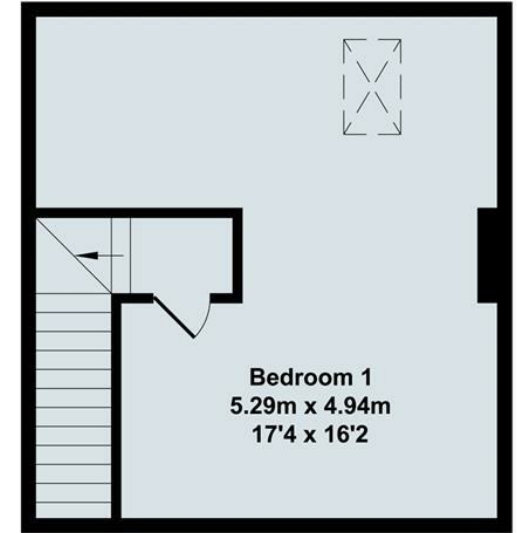




Ground Floor
 Approx. Floor
 Area 62.85 Sq.M.
 (677 Sq.Ft.)




First Floor
 Approx. Floor
 Area 56.64 Sq.M.
 (610 Sq.Ft.)

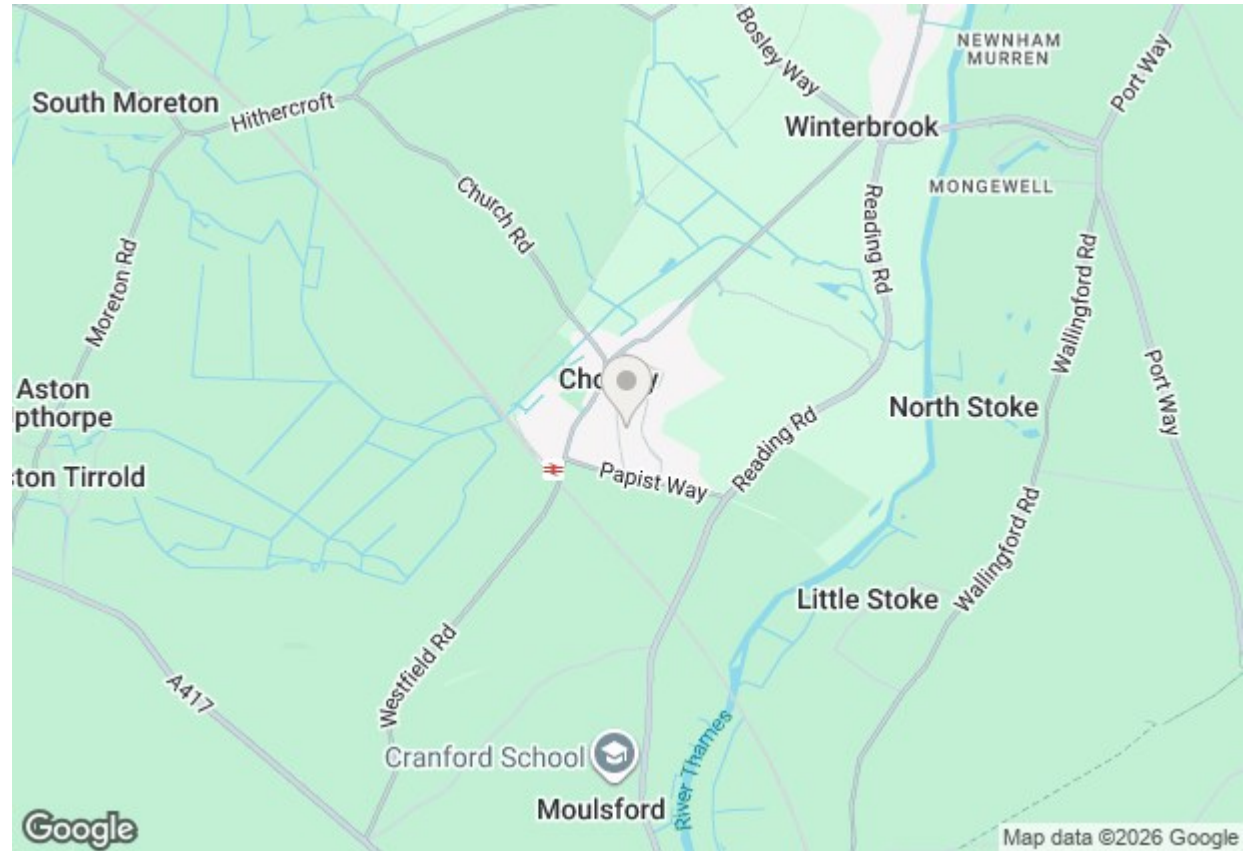


Second Floor
 Approx. Floor
 Area 25.76 Sq.M.
 (277 Sq.Ft.)

Total Approx. Floor Area 145.25 Sq.M. (1563 Sq.Ft.)

Energy Efficiency Rating

	Current	Potential
Very energy efficient - lower running costs		
(92 plus) A		
(81-91) B		
(69-80) C	74	82
(55-68) D		
(39-54) E		
(21-38) F		
(1-20) G		
Not energy efficient - higher running costs		
England & Wales	EU Directive 2002/91/EC	



Directions

Viewings

Viewings by arrangement only. Call 01235 514267 to make an appointment.

Council Tax Band

D