



Cranborne Avenue, KT6

£599,950

Dexters



Cranborne Avenue, KT6

A stunning, three bedroom, end of terrace family home. Beautifully designed throughout, this property offers an entrance porch, a downstairs cloakroom, a wonderful front reception room with feature fireplace and original picture rails as well as a gorgeous newly installed kitchen with dining space.

Upstairs there are three bedrooms, two generous doubles, with fitted wardrobes and a third good size single, the bathroom is immaculate and well laid out.

To the front of the property there is a large paved area, this could provide parking, subject to permission from the council and to the rear is a beautiful, large sunken garden.

This property could also be extended to the rear and into the loft (STPP).

Cranborne Avenue is a peaceful residential road, with easy access to the A3 and just over half a mile away from Tolworth train station, offering efficient links in to London Waterloo.

Features

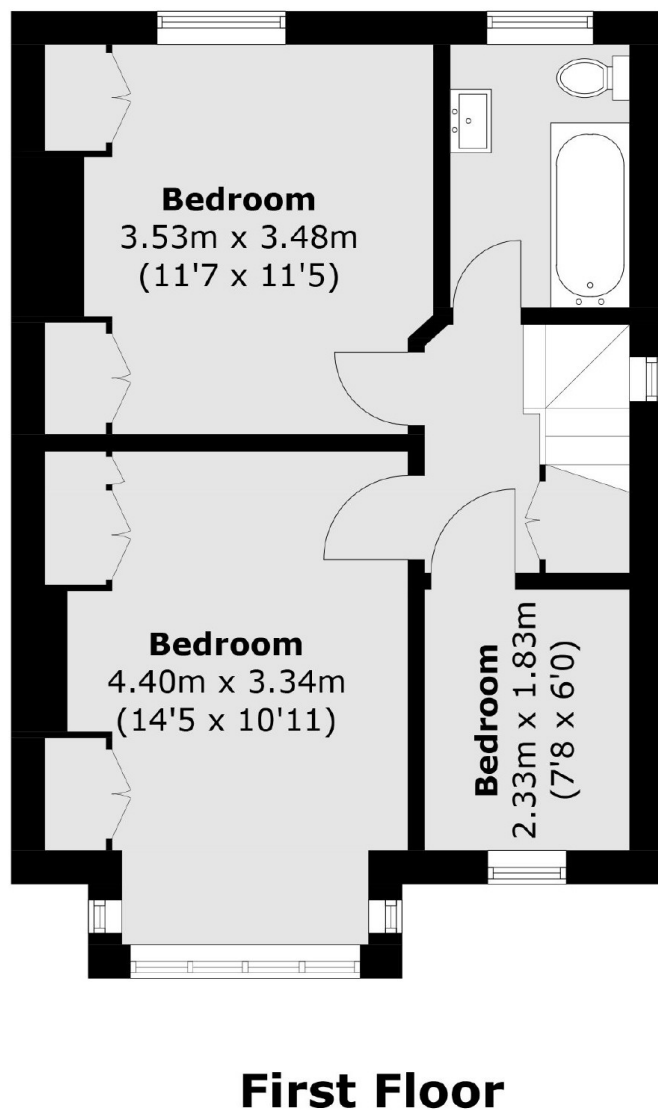
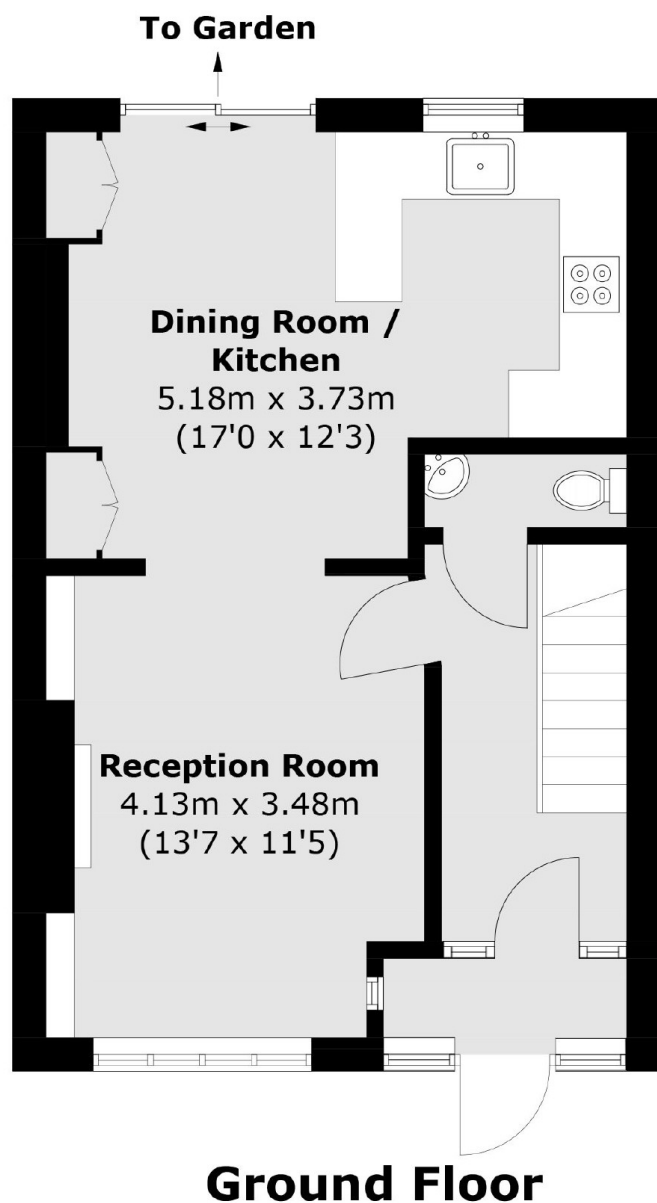
- End Of Terrace
- Immaculate Throughout
- Three Bedrooms
- Large Garden
- Great Location
- Potential To Extend (STPP)







Cranborne Avenue, Surbiton, KT6



Total area (approx.): 81.7 sq. m (879.4 sq. ft)