





46

Linn Walk, Garelochhead, Helensburgh, Argyll And Bute. G84 0DS





46

Linn Walk, Garelochhead, Helensburgh, Argyll And Bute. G84 0DS





Located within the pretty village of Garelochhead, 46 Linn Walk is a lovely, well-proportioned two-bedroom mid-terrace villa that enjoys views over neighbouring woodland to the rear.

Internally the property is bright and airy. On entering there is a welcoming hallway which has a useful store cupboard. The lounge is an excellent size with dual aspects and ample space for a dining table and chairs if required. The kitchen is fitted with a selection of units and worktops with space for free-standing white goods. The kitchen also has a courtesy door accessing the private rear garden.

Upstairs the property has two fantastic size double bedrooms, the main bedroom is particularly spacious with views to the front and the rear overlooks the gorgeous woodland. The bathroom is also on this level and is fitted with a modern suite and tiling. The property has double glazed windows and gas central heating.

Externally the property has a beautiful rear garden which is mainly laid to lawn with various areas to sit and relax in the summer months. The rear garden also has a greenhouse and wooden shed. The front garden has been designed with ease of maintenance in mind and on street parking is available directly outside the property.

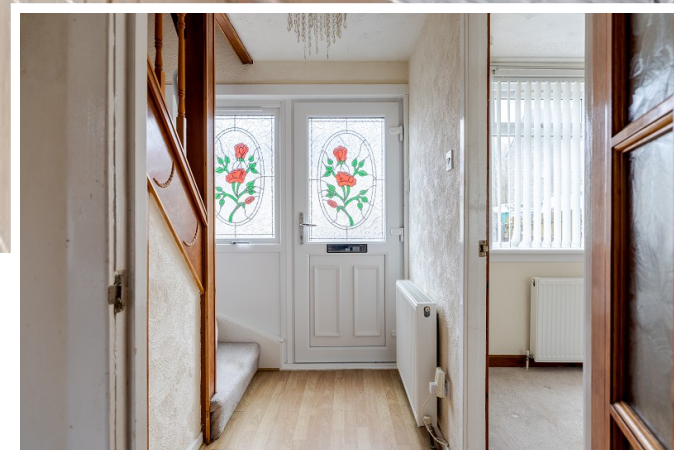
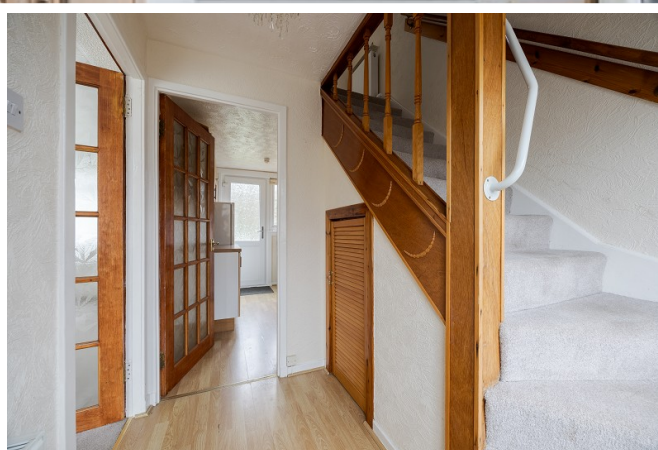
EPC Band D  
Council Tax Band C





46

Linn Walk, Garelochhead, Helensburgh, Argyll And Bute. G84 0DS





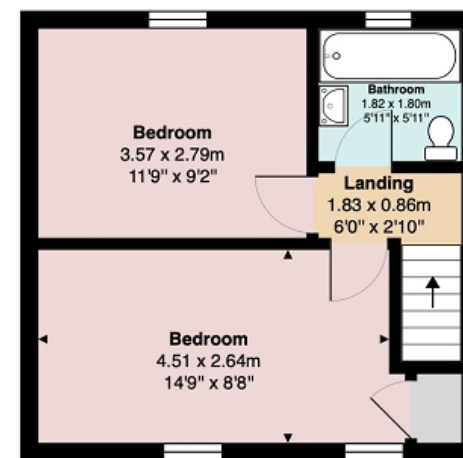


## Measurements

Hallway	7' 04" x 7' 0" or 2.24m x 2.13m
Lounge	18' 0" x 10' 11" Max Max or 5.49m x 3.33m Max
Kitchen	10' 06" x 7' 0" or 3.20m x 2.13m
Landing	6' 0" x 2' 10" or 1.83m x 0.86m
Bedroom 1	16' 09" Max x 8' 08" Max or 5.11m Max x 2.64m Max
Bedroom 2	11' 09" x 9' 02" or 3.58m x 2.79m
Bathroom	5' 11" x 5' 11" or 1.80m x 1.80m



Ground Floor



First Floor

All measurements are approximate and for display purposes only

Contact our office for further details



**rightmove**  
find your happy

NOTE: These details have been prepared for guidance. If there is any point which you find misleading please contact McArthur Stanton where further information is available. Measurements have been taken from wall to wall, unless otherwise stated, and have been recorded by use of a sonic beam. Services and appliances not tested. Details have been prepared by February 2026. If required, we can arrange for a property market appraisal to be carried out on your existing property.

46

Linn Walk, Garelochhead, Helensburgh, Argyll And Bute. G84 0DS

